

# SGMA IMPLEMENTATION IN THE KINGS SUBBASIN

Eric Osterling  
Manager of Water Resources  
Kings River Conservation District

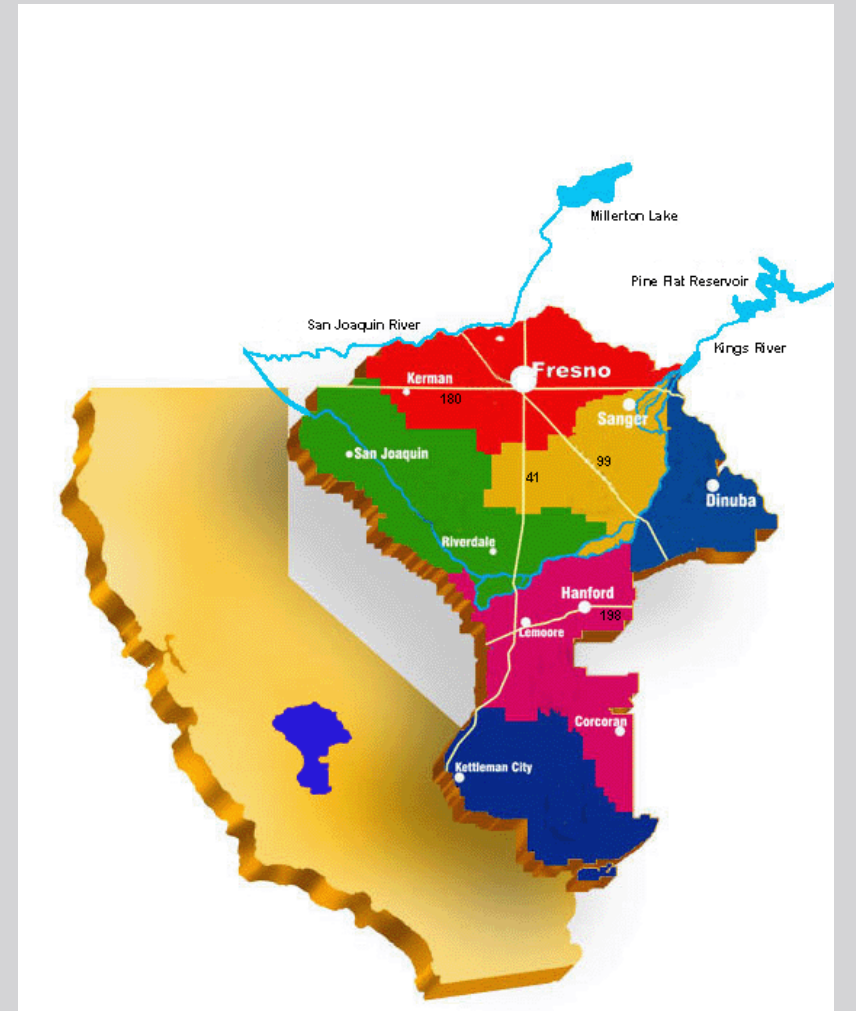
6/1/16



[www.kingsgroundwater.info](http://www.kingsgroundwater.info)

# ABOUT KRCD

- Est. 1951
- Special act resources agency w/ broad powers
- 1.2 million acre service area
- Overlies majority of Kings and Tulare Lake subbasins
- Manages regional resources management programs (IRWM, ILRP, CASGEM, etc.)
- Will not be a GSA
- SGMA role is as a shared technical, administrative and coordination resource for area GSA groups



# REGIONAL SETTING

## Large Area Interconnected Subbasins

San Joaquin Valley Basin



8.9 Million Acres | 16 Subbasins

Tulare Lake Hydro Region



10.9 Million Acres | 7 Subbasins

# REGIONAL SETTING

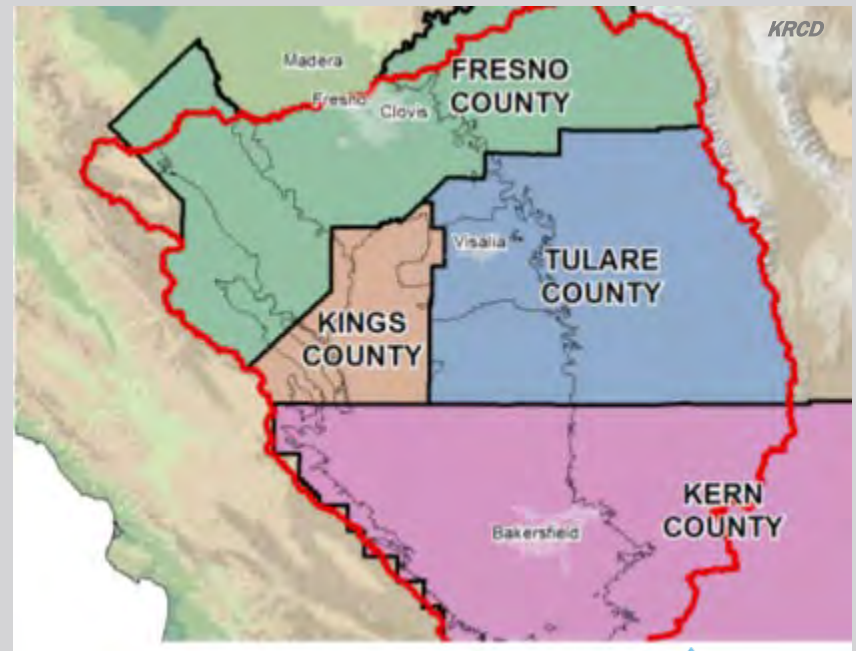
## Jurisdictional Jigsaw Puzzle Gaps, Overlaps and Gray Areas

Cities and Water Agencies



*\*Not a comprehensive map*

Overlying Counties





# REGIONAL SETTING

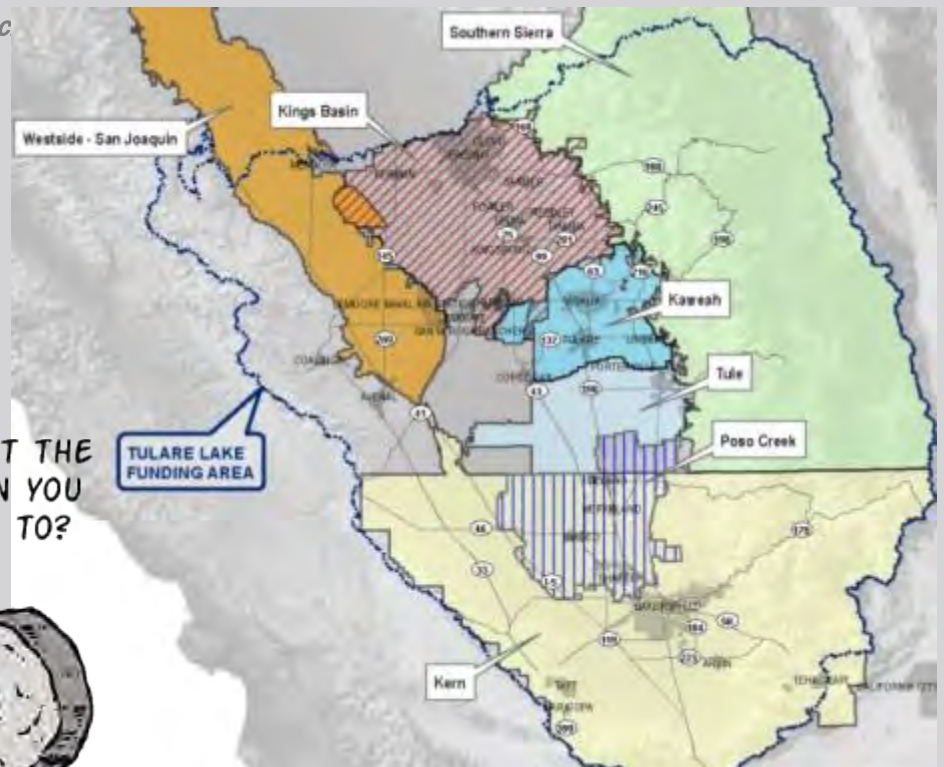
Attempt to improve, not reinvent existing planning...

## AB 3030/SB 1938 Plans

## IRWM Plans



RC

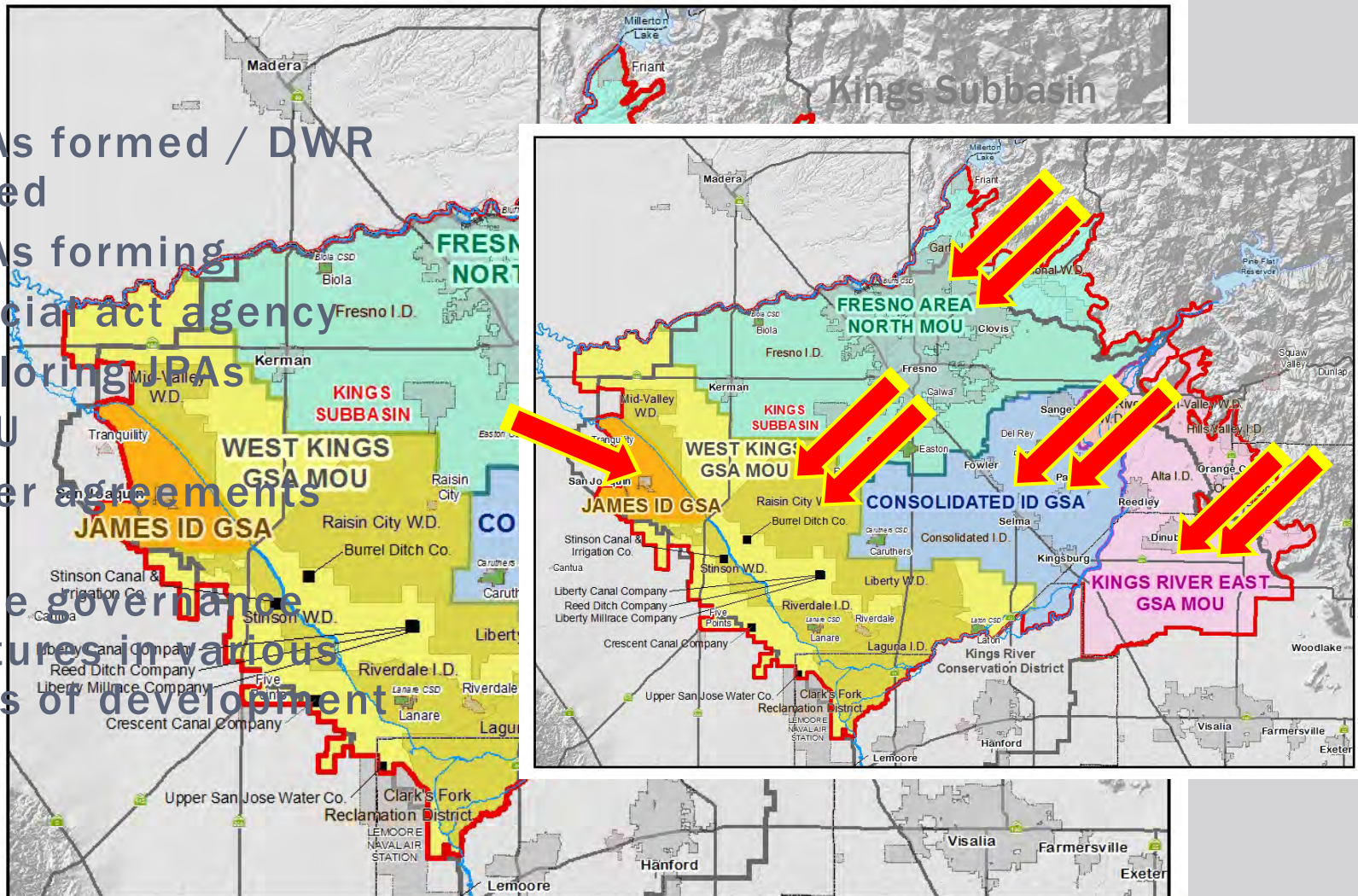


WHY REINVENT THE WHEEL WHEN YOU DON'T HAVE TO?



# CURRENT GSA FORMATION EFFORTS

- 2 GSAs formed / DWR notified
- 3 GSAs forming
- 1 special act agency
- 2 exploring IPAs
- 1 MOU
- 1 other agreements
- Unique governance structures in various stages of development



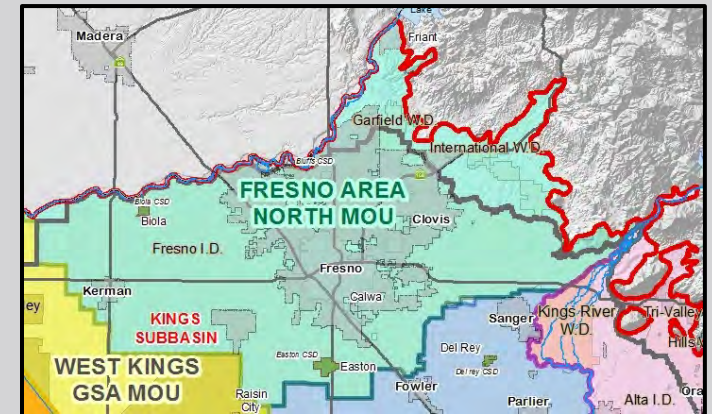


# CURRENT GSA FORMATION EFFORTS

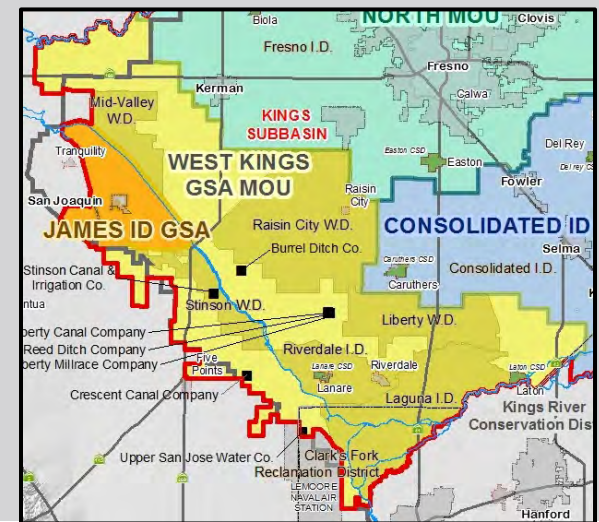
- 12 members, proposed 7 member JPA board
- Group meets monthly
- DWR facilitation services (MWH)
- Committees / Sub-committees

- 17 participants, proposed 5-7 member board
- Group meets monthly
- Exploring JPA / Special Act Agency options
- Committees / Sub-committees
- Mutual's, White Areas issues

## North Kings GSA



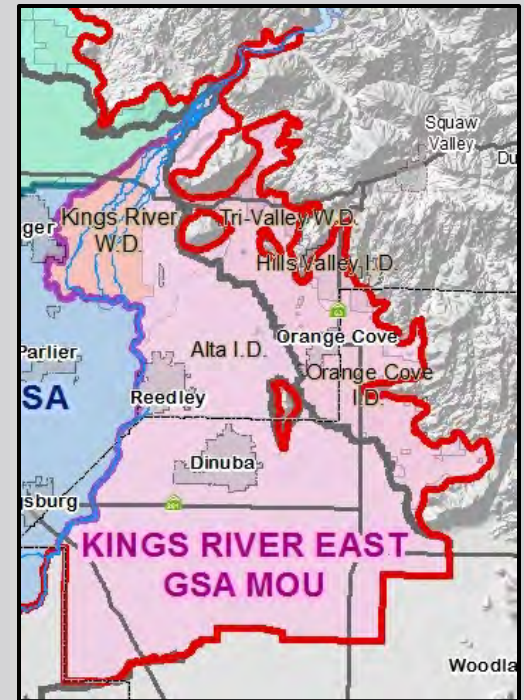
## West Kings GSA



# CURRENT GSA FORMATION EFFORTS

- 15 participants, 7 member board
- Group meets monthly
- Seeking special act legislation SB 37 (Vidak)

## Kings River East GSA

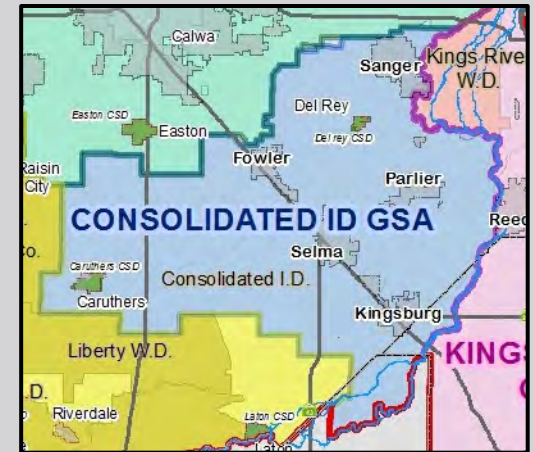




# CURRENT GSA FORMATION EFFORTS

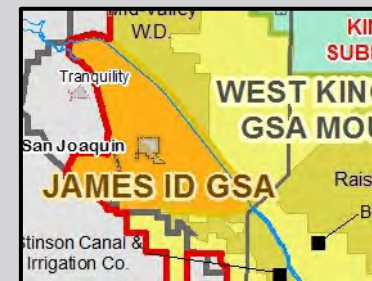
- Consolidated ID will be GSA
- Existing recharge coordination agreements w/ cities to be amended or new coordination agreements prepared

## Consolidated ID GSA



- James ID is exclusive GSA
- Coordination MOU executed between JID and RD 1606

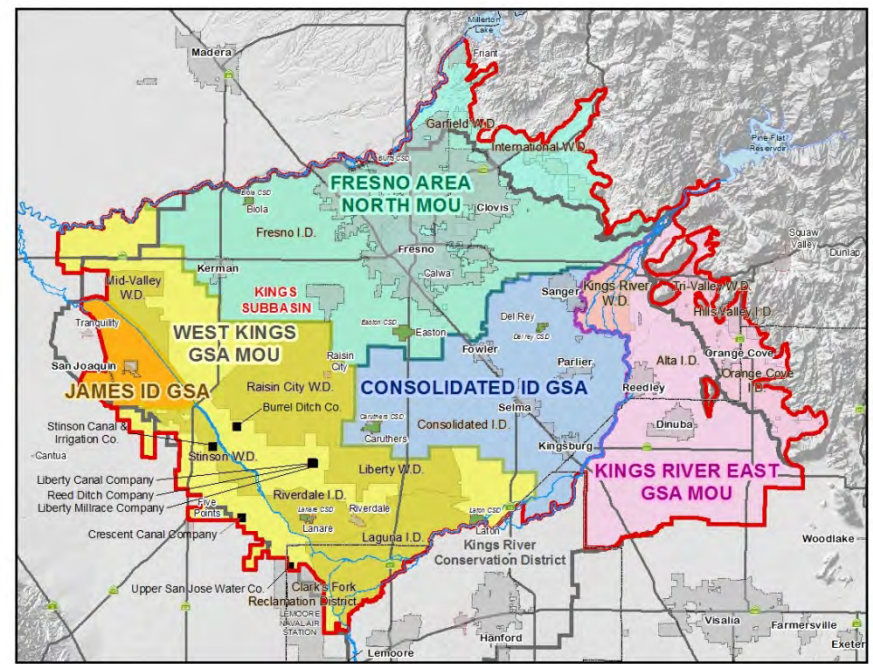
## James ID GSA



# BASIN COORDINATION EFFORTS

- Reps from each GSA effort in subbasin meet monthly
- Adopted principals of agreement
- Technical coordination activities (grants, data, modeling, mapping, etc.)
- Coordinated outreach events (DACs, Ag, Industrial users)
- Communications tools (website, FAQ's, maps, etc.)

## Kings Subbasin SGMA Coordination MOU

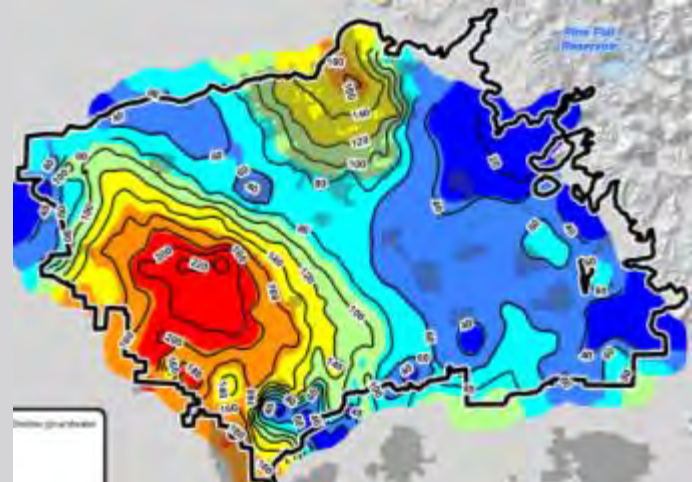


# SUSTAINABILITY CHALLENGES

- DWR-designated “High Priority” and “Critically Overdrafted” subbasin
- ~135 TAF annual average overdraft
- Hydrogeologically interconnected with 5 adjacent subbasins
- Surface water have's and have-not's
- Dry wells
- Subsidence
- Groundwater quality



Surface Water Service Area



Groundwater Elevations



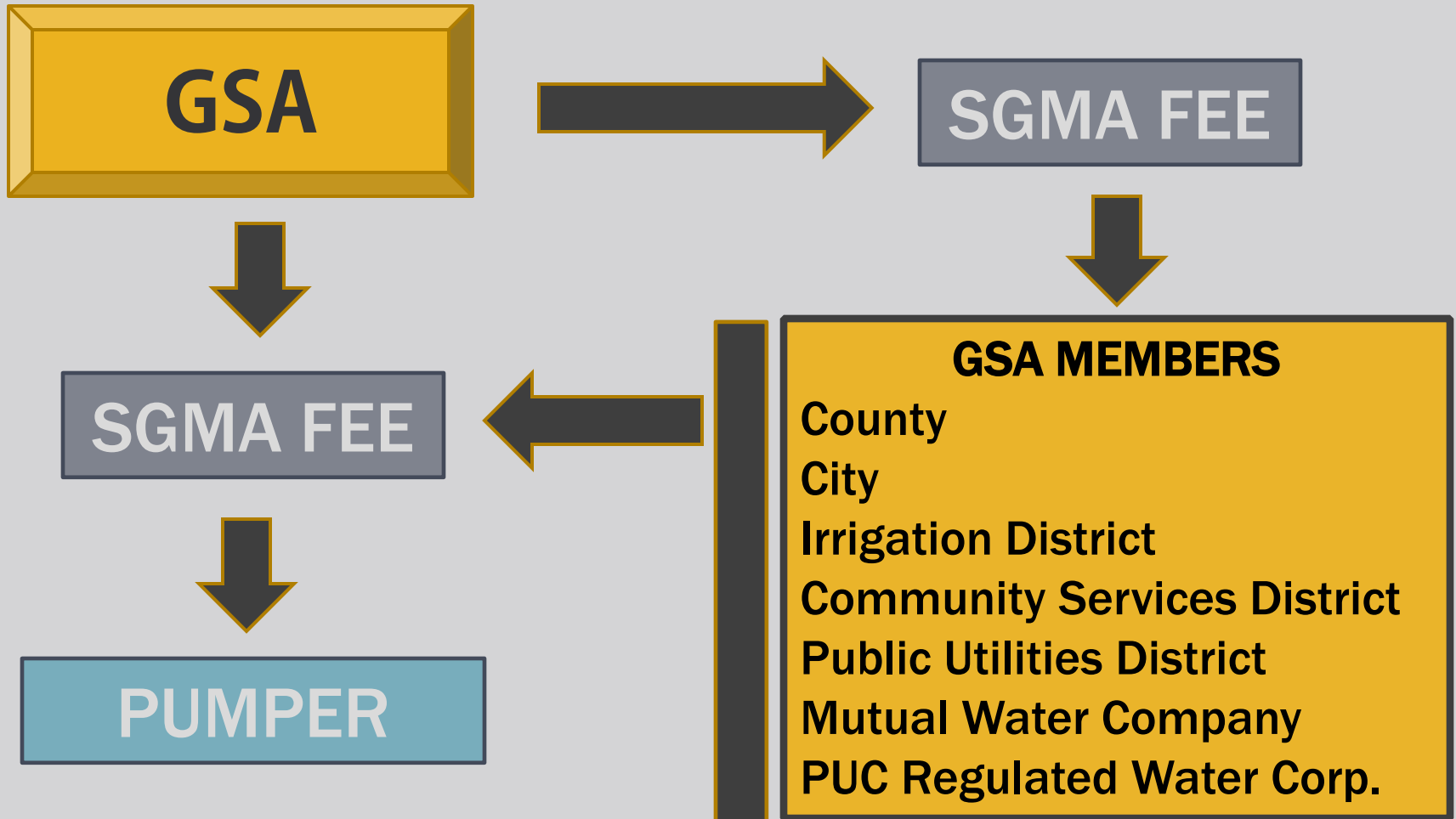
# FUNDING CHALLENGES

## SGMA fees, what we (don't) know...

*Section 10730 (a) A groundwater sustainability agency may impose fees, .....on groundwater extraction or other regulated activity, to fund the costs of a groundwater sustainability program, .....*

- SGMA did not create any new fee structures nor soften the current ones.
- Prop 1 available grant funding is only enough to cover a portion of overall costs

# WHO DRAWS THE SHORT STRAW?



# CLOSING THOUGHTS

- Past Track Record
  - Mostly successes
  - Some failures
- Current Climate
  - Heightened awareness due to drought
  - Regulatory fatigue
  - Economically depressed region
- This Is Only The Beginning
  - Additional clean-up legislation
  - Legal battles



# CLOSING THOUGHTS

If you have young children...



...the future of CA water law appears bright!



# KINGS RIVER REGION GROUNDWATER

[www.kingsgroundwater.info](http://www.kingsgroundwater.info)

Eric Osterling

559.237.5567, ext. 135 ☐ [eosterling@krcd.org](mailto:eosterling@krcd.org) ☐ [@kingsrivercd](https://www.instagram.com/kingsrivercd)

