

# **Santa Ana River Watershed Conference**

**Mark R. Norton PE,  
LEED AP, ENV SP  
SAWPA Water Resources and  
Planning Manager**

**March 29, 2019**



# What is Integrated Regional Water Management Planning?



# Past SAWPA One Water One Watershed Plans (OWOW)



SAWPA's OWOW is a recognized leader in this watershed approach

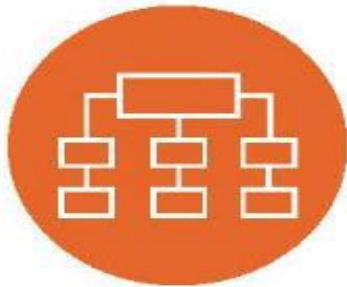


# OWOW Guiding Principles



## **Create Anew**

A shared vision of a healthy productive watershed



## **Collaboration**

### **Across Boundaries**

Citizens of the watershed, finding multi-jurisdictional solutions



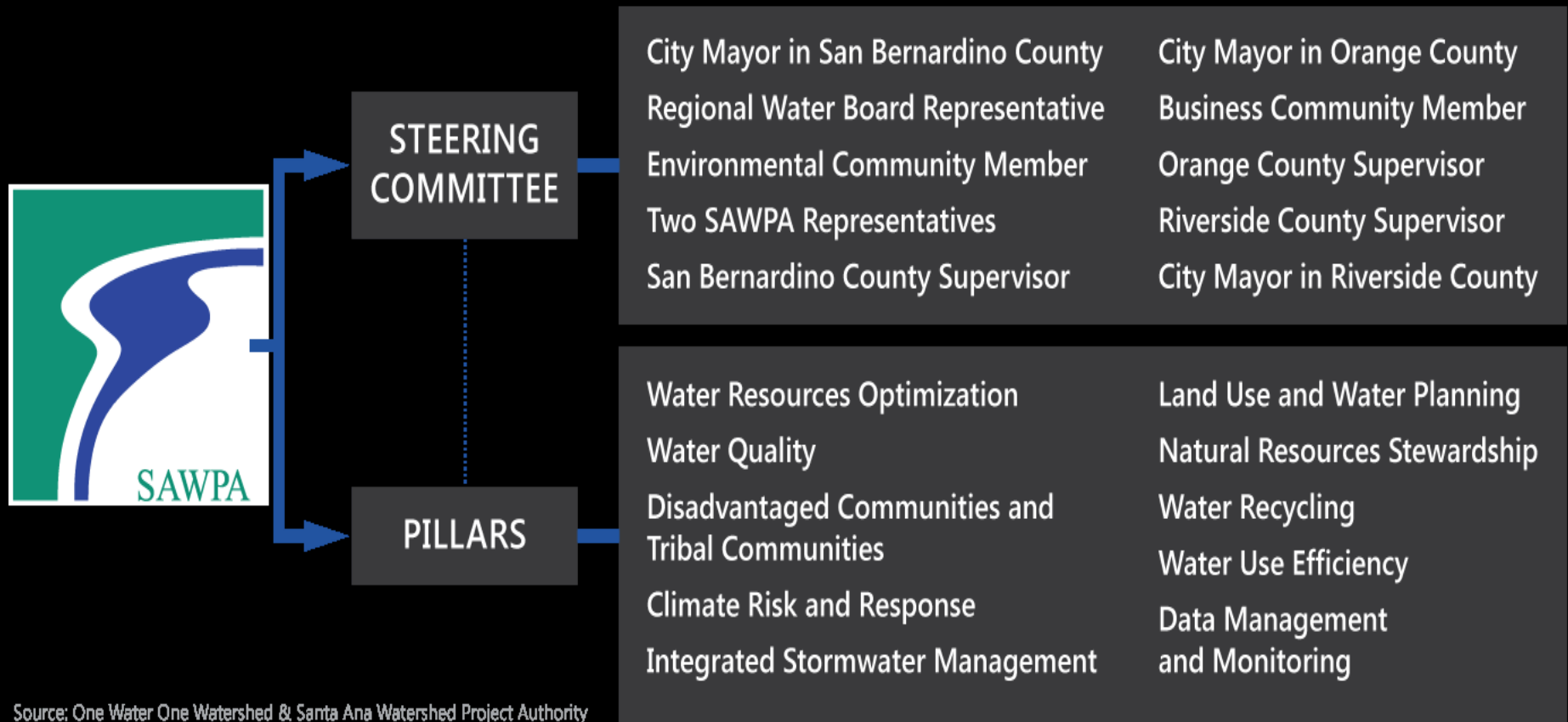
## **Adopt Systems Approach**

Problems are interrelated, seek synergies, create catalysts

# Pillar Workgroups wrote the core of the OWOW Plan



# OWOW Governance – Unique Collaboration & Decision-Making



# OWOW Plan Update 2018 Timeline



OWOW Conference (May 2017)



OWOW Steering Committee Mtgs. (Quarterly)



Call for Projects Proposition 1 Round 1 Grant (Jan. 2019)

2017

**Planning Kickoff**

DWR Planning Grant (Aug. 2017)



2018



Climate Change Update Funding Agrmt with Reclamation (Mar. 2018)

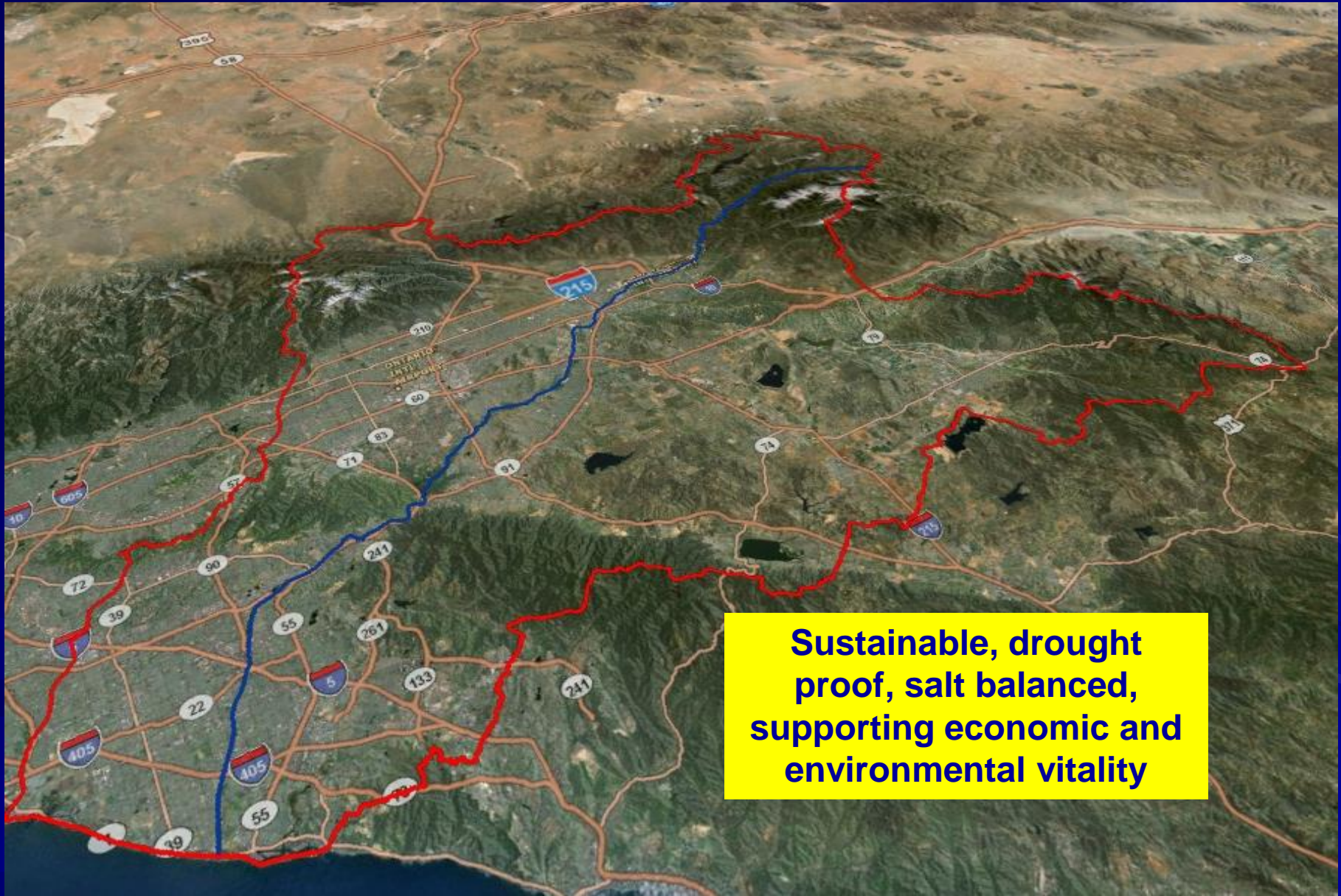
2019

**OWOW Plan Update Adopted 2/19/19**

Pillar Integration Workshops (Monthly)



# Vision of Santa Ana River Watershed by 2040



**Sustainable, drought  
proof, salt balanced,  
supporting economic and  
environmental vitality**

# OWOW Plan Update 2018 Goals

- Achieve resilient water resources...
- Ensure high-quality water...
- Preserve and enhance recreational areas and habitat...
- Engage with members of disadvantaged...
- Educate and build trust...
- Improve data integration...



# OWOW Plan Update 2018 Highlights

## Policy and Management Strategies



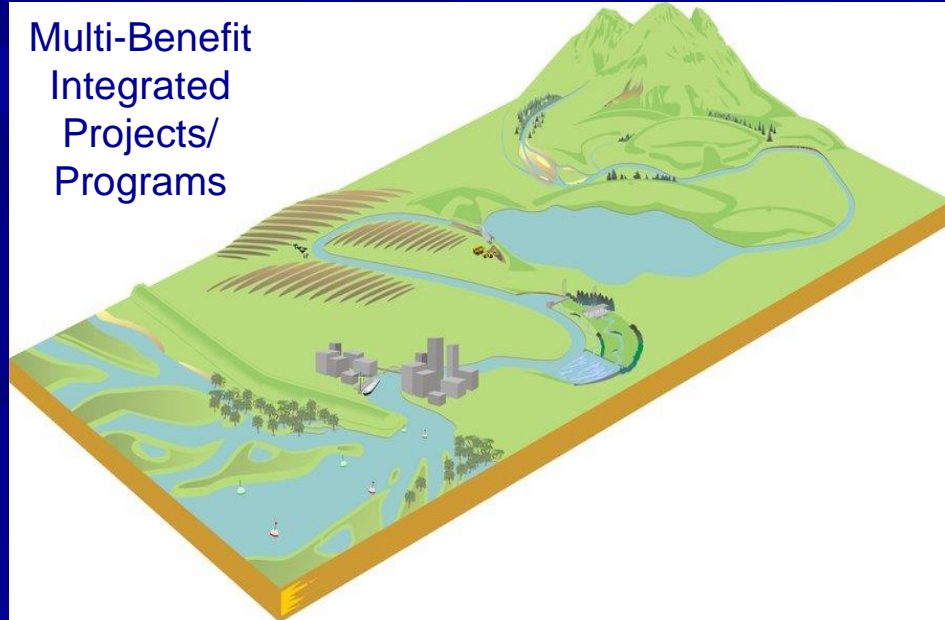
## Engaging Disadvantaged Communities and Tribal Communities

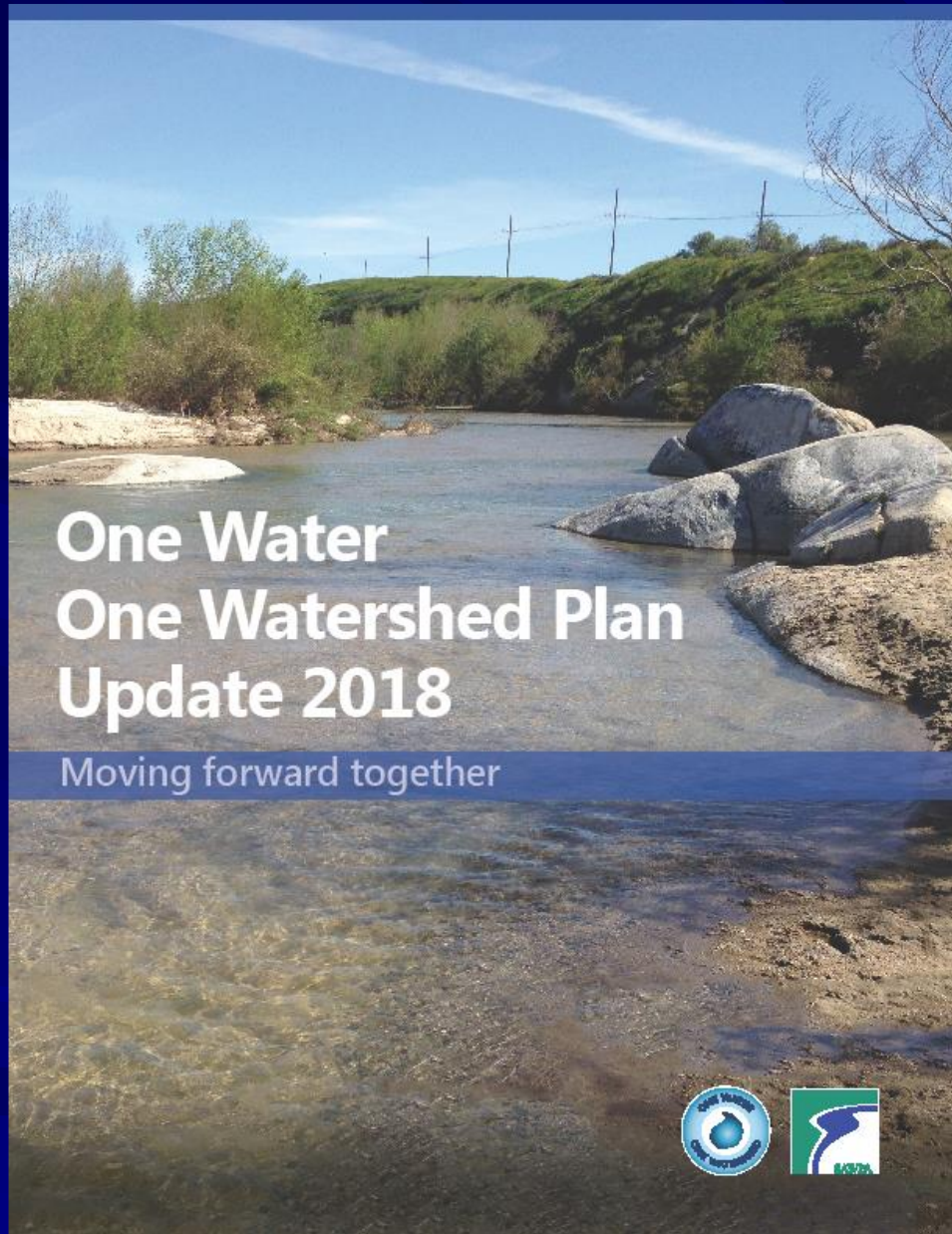


## Watershed Sustainability Assessment



## Multi-Benefit Integrated Projects/Programs





Adopted  
Feb. 19, 2019

# Next Steps

- Implement IRWM grant funding for Prop 1 Round 1
- Support local and subregional implementation reflective of OWOW Plan
- Monitor progress on watershed sustainability assessment factors

