

Making IRWM Stronger

*Making the most of your IRWM effort,
and planning for implementation*

IRWM 2.0: The Next Generation

May 21, 2015

San Diego, CA

Elizabeth Betancourt
Watershed Science and Policy Analyst

FORSGREN
Associates Inc.

Overview

- Integrated planning as a concept
- Lessons learned: sharing good examples
- Making IRWM stronger: what those examples can do
- Take-aways: actions to take back to the group

Integrated Planning

- It begins at the beginning: collaborative issue identification
- These should feed implementation needs
- Projects then may be developed based on these shared issues, guiding implementation

IRWM as a Tool

- *“It is the intent of the Legislature to encourage local agencies to work cooperatively to manage their available ...water supplies to improve the quality, quantity, and reliability of those supplies.”*
- CWC section 10531



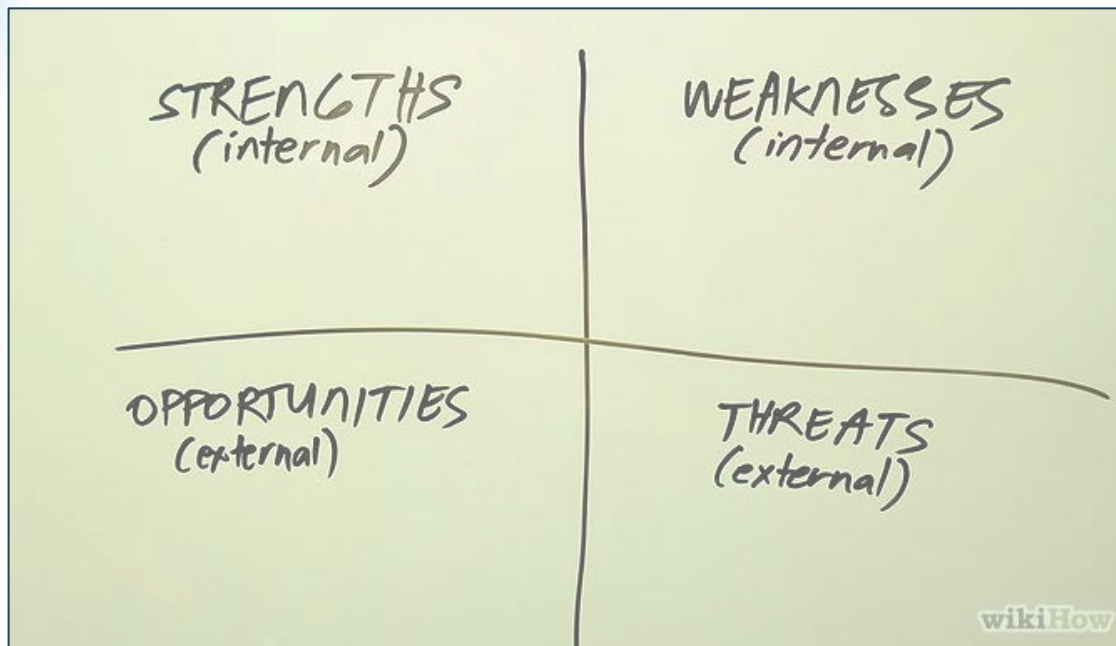
IRWM as a Tool


- May be used for alternate purposes:
 - Relationship building
 - Capacity building
 - Metrics tracking
 - Regional advocacy
- Why might we be interested in these?
 - Organizational longevity
 - Including more diverse perspectives in order to better address challenging issues
 - Synergies outside of IRWM
 - More competitive projects



IRWM Tools: through “Lessons Learned”

- Effective Facilitation (Upper Sacramento)
 - RWMG *empowerment* is key
 - RWMG should *always* guide policy decisions





IRWM Tools: through “Lessons Learned”

- Full Integration (Upper Pit)
 - Partners: ignorance is not bliss – non-traditional partners have a lot to bring to the table
 - Projects: acknowledge connections, rather than simply “like with like”
- Plan with the Future in Mind (Yuba)
 - Climate change required, but what about other future conditions?
 - Population and development patterns?
 - Regulatory changes?
 - Prioritizing implementation strategies?



IRWM Tools: through “Lessons Learned”

- Participatory Planning (Tahoe-Sierra)
 - Right now you might be thinking:
 - How will we fund ongoing operations?
 - What are our implementation priorities?
 - Think about what you want, and the actions these activities will require
- Track your Progress (SWWG)
 - Know how to quantify success
 - Understand your needs
 - Celebrate accomplishments!



Making IRWM Stronger

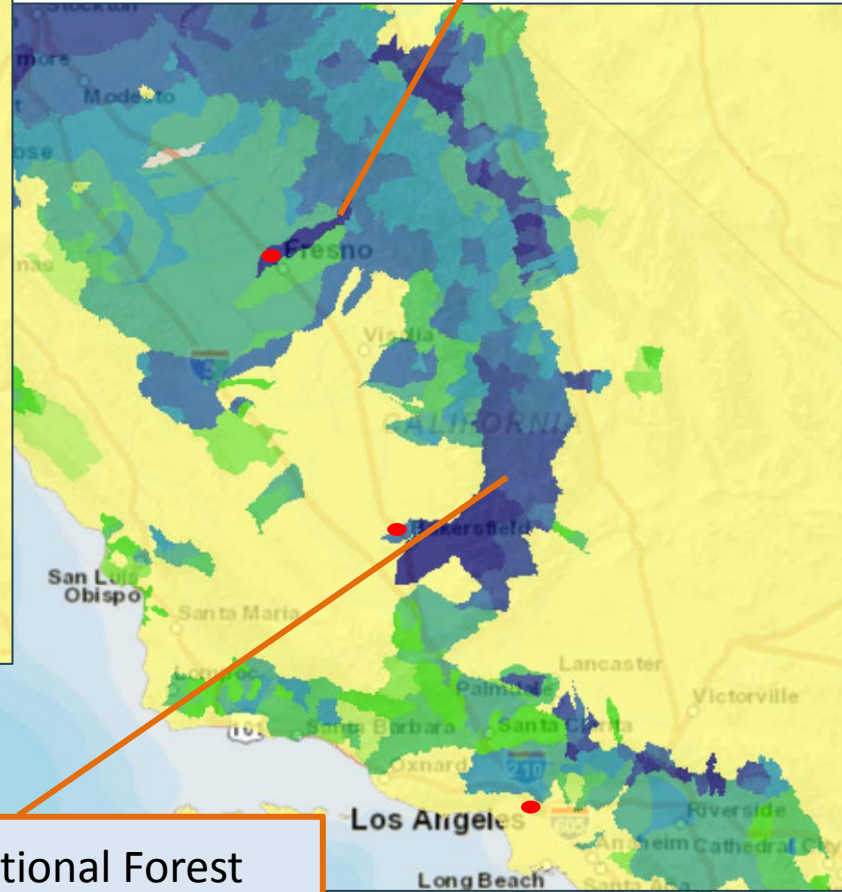
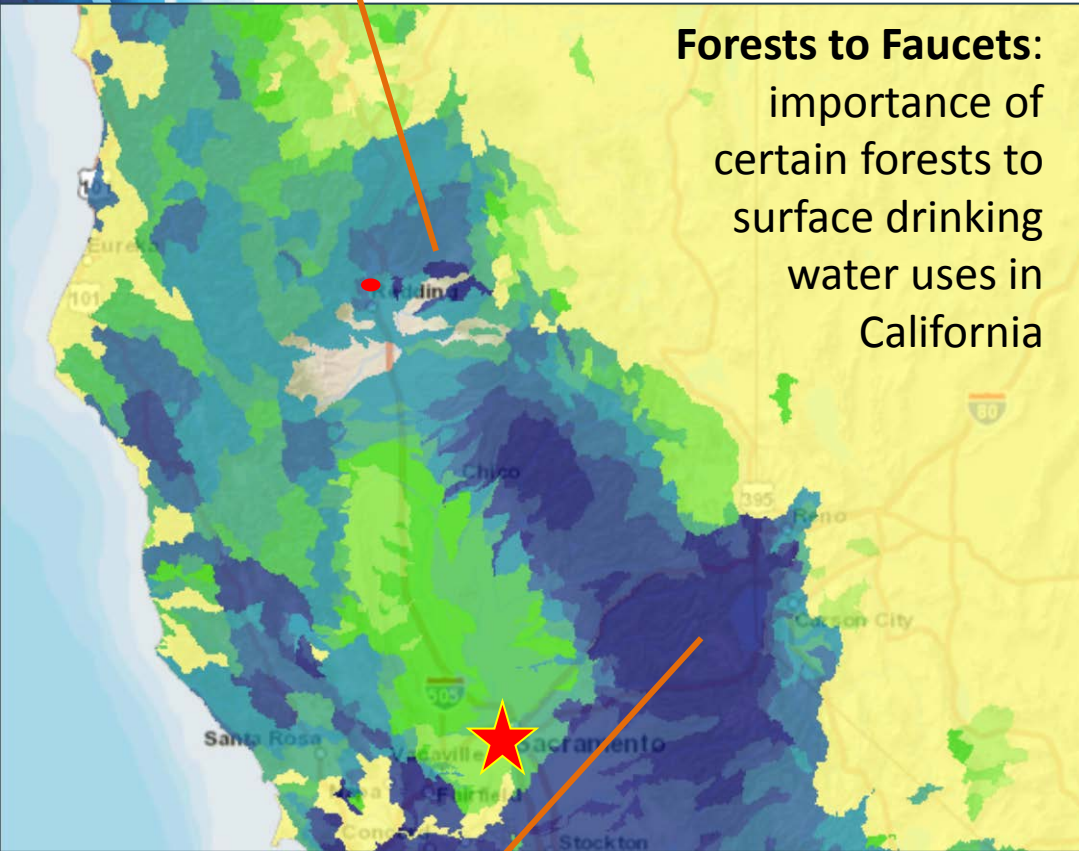
- Interregional Collaboration
 - Sacramento River Watershed Program
 - Sierra Water Work Group
 - Source water connectivity

Modoc Plateau and Pit River watershed

Making IRWM Stronger

Kings River watershed

Forests to Faucets:
importance of
certain forests to
surface drinking
water uses in
California



American River watershed

Sequoia National Forest

Making IRWM Stronger

- Advocacy



Disadvantaged Communities and the Inyo-Mono IRWM Program



A study of the engagement of disadvantaged communities in Integrated Regional Water Management

Upper Sacramento, McCloud, Lower Pit Integrated Regional Water Management



Regional Water Management Group (RWMG)
5727 Dunsmuir Avenue,
Dunsmuir, CA 96025

Ms. Pamela Creedon
Executive Officer
CA Regional Water Quality Control Board
Central Valley Region
11020 Sun Center Drive, Suite 200
Rancho Cordova, CA 95670-6114

April 24, 2015

Re: USR RWMG Resolution re CVRWQCB Exec Order 5-01-233

Dear Ms Creedon,

The Upper Sacramento, McCloud, Lower Pit Regional Water Management Group (USR RWMG) submits for your information and review our March 19, 2015 Resolution regarding the Central Valley Regional Water Quality Control Board (CVRWQCB) Executive Order 5-01-233.

The membership of the USR RWMG is a result of the direction and mandate of the California Department of Water Resources to invite participation of a wide range of stakeholders that include Statutory Authorities, Resource Management Interests and Tribal Authorities.

Our Integrated Regional Water Management Plan (IRWMP) identifies goals and objectives for research, educational programs and projects that can benefit the health of our watershed while maintaining and enhancing high quality water. Additionally our Plan supports the sustainable storage and production of water while respecting the larger physical and cultural environment.

Trout Unlimited, as a member, presented to the USR RWMG an apparent regulatory violation and discrepancy of the Waste Water Discharge permit currently owned by Crystal Geysers, Inc. in Mount Shasta (CVRWQCB Exec Order 5-01-233). Trout Unlimited, in conjunction with other members of the USR RWMG and a local citizen group, is currently conducting a well monitoring project in the vicinity of the proposed Crystal Geysers water bottling plant.

After in depth discussion, the USR RWMG agreed that the apparent permit violation and discrepancy could allow a significant pollution threat to the Big Springs aquifer. The Big Springs aquifer is the source of drinking water for hundreds of area households and is thought to have a direct connection to the surface water system of the Upper Sacramento River.

Take-Aways

1. Represent *yourself*
2. Identify *true* regional needs, and *concrete actions* to address those
3. Utilize *all of your resources*
4. *Slow down* and develop relationships
5. *Look to the future:*
 - What do you need?
 - How can you get there?
 - Who can help you?

Forsgren Associates, Inc.

Elizabeth Betancourt, Watershed Science and Policy Analyst
415/378-6709; EBetancourt@Forsgren.com