

# U.S. ARMY CORPS OF ENGINEERS

## THE FEDERAL NEXUS IN THE WATERSHED: PROGRAMS AND PRIORITIES

### ONE WATER ONE WATERSHED CONFERENCE

Eileen Takata, RLA  
Watershed Program Manager  
Planning Division  
29 March 2019

*"The views, opinions and findings contained in this report are those of the authors(s) and should not be construed as an official Department of the Army position, policy or decision, unless so designated by other official documentation."*



**US Army Corps  
of Engineers®**





# USACE CIVIL WORKS



**Lock and Dam 15**  
Navigation / Mississippi River



**Flood Wall**  
Flood Risk Management / Williamson, KY



**Florida Everglades**  
Ecosystem Restoration / South Florida



**New Orleans, LA**  
Flood Risk Management / HDRRS

Deliver enduring and essential water resource solutions using effective transformation strategies.

## Navigation

## Flood Risk Management

## Ecosystem Restoration and Infrastructure

## Recreation and Natural Resource Management

## Hydropower

## Regulatory Wetlands and Waterways

## Water Supply

## Expenses Includes ASA(CW)



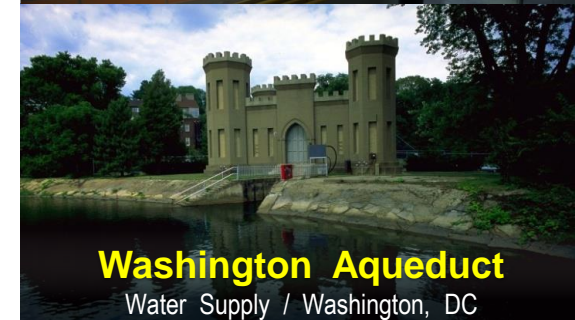
**Dredge ESSAYONS**  
Navigation / Coos Bay, OR



**Lake Seminole, GA**  
Recreation / Mobile District



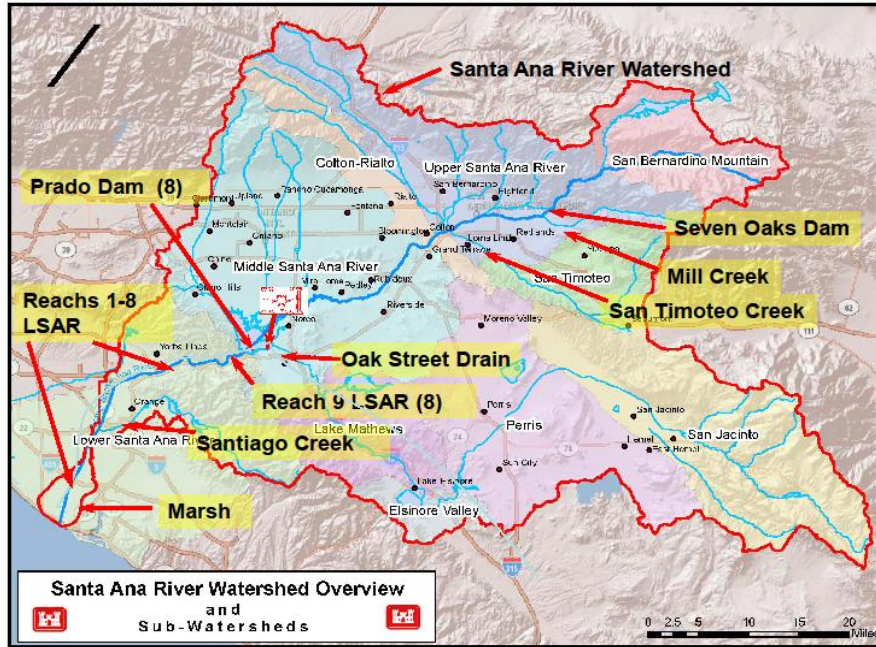
**Bonneville II Powerhouse**  
Hydropower / Columbia River



**Washington Aqueduct**  
Water Supply / Washington, DC

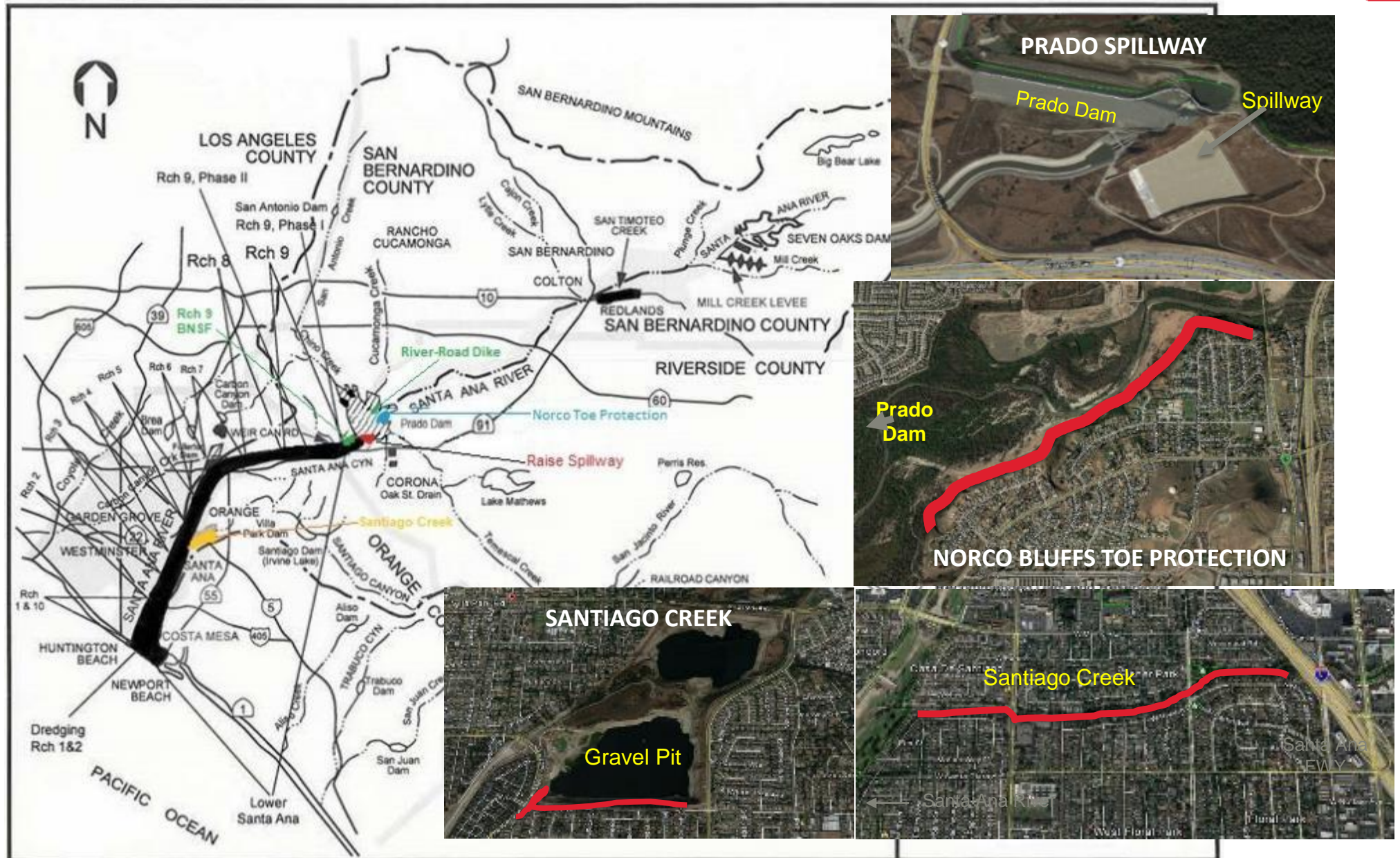


# Santa Ana River Mainstem Completed Features





# SANTA ANA RIVER MAINSTEM PROJECT UPDATE





# PRADO BASIN ECOSYSTEM RESTORATION, CA

5



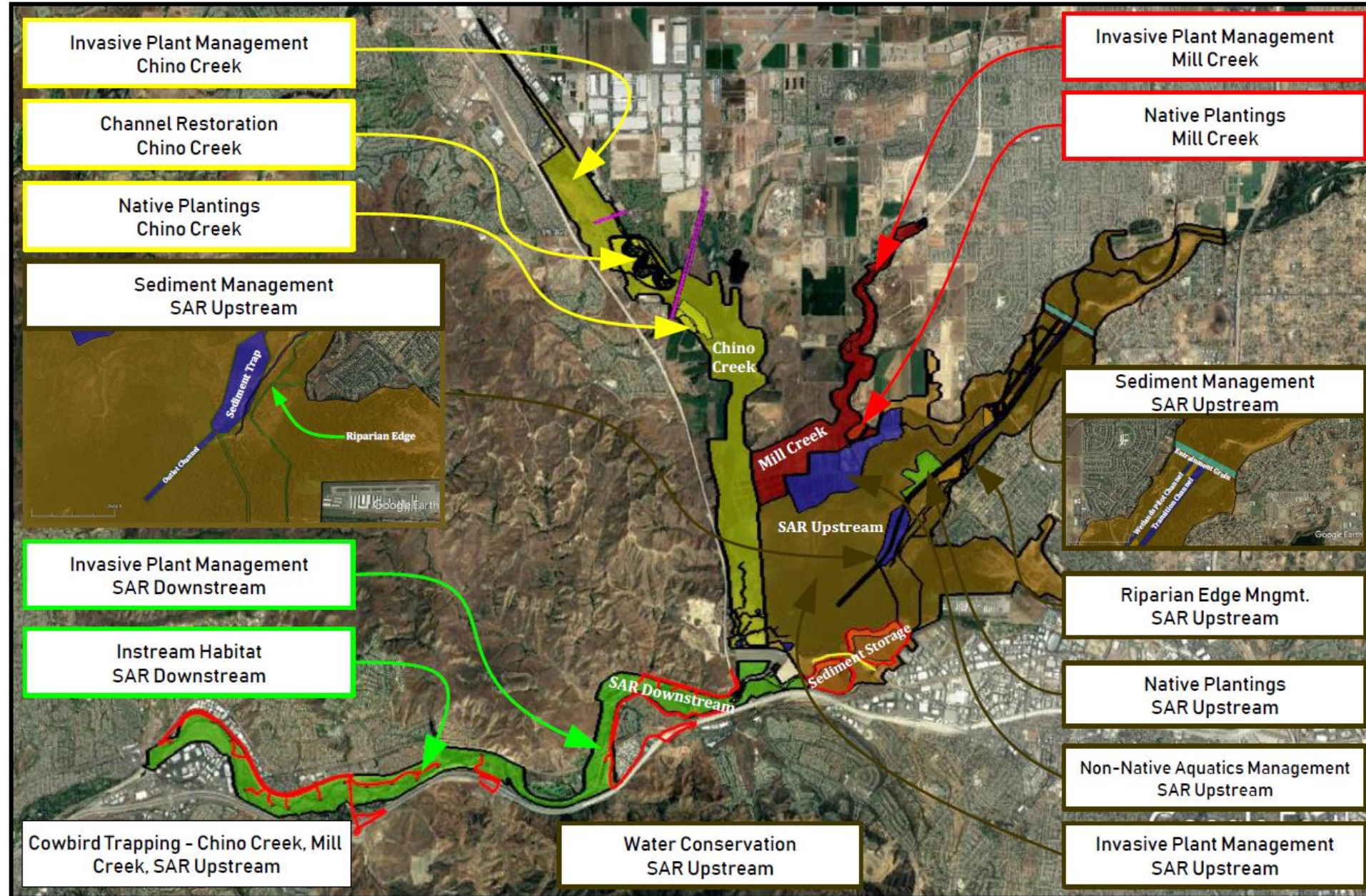
- The study purposes are **ecosystem restoration** and **water conservation**
- Prado Dam traps sediment, affecting the river channel and floodplain upstream and downstream of the dam
  - Altered hydrology of Santa Ana River and watershed has degraded riparian and aquatic habitats
  - Opportunity for water conservation not fully utilized





# ALTERNATIVE 2 MAP VIEW – TENTATIVELY SELECTED PLAN

6

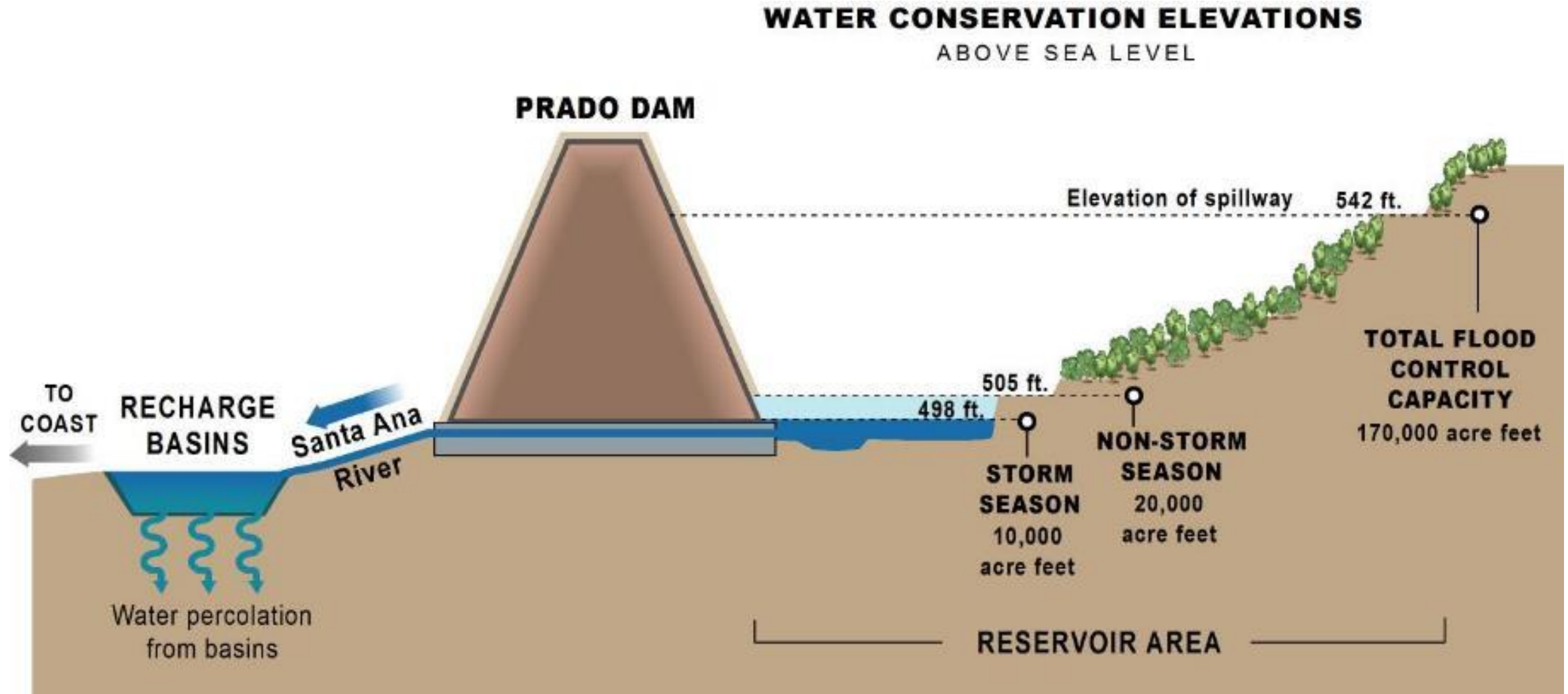




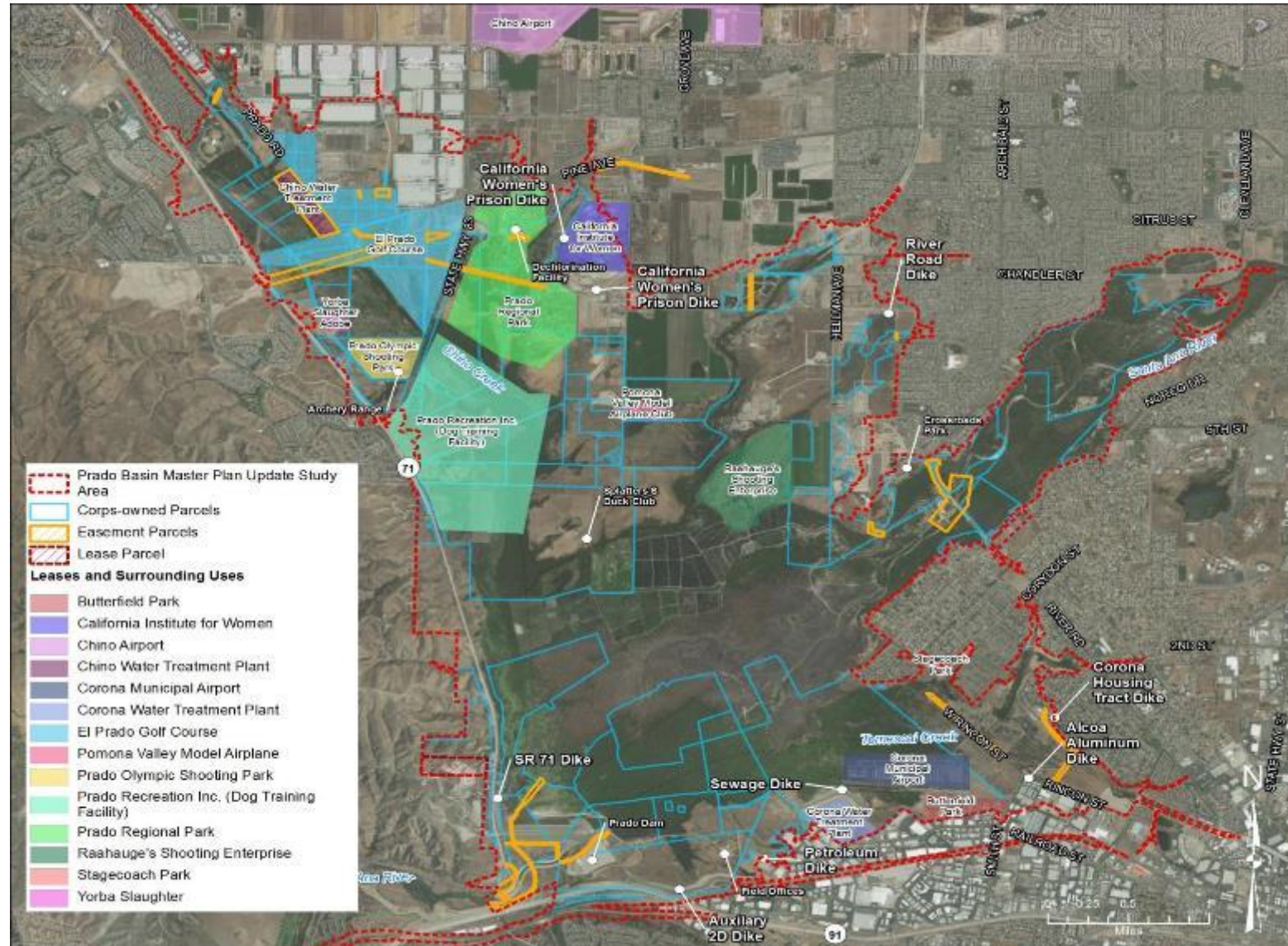


# PRADO DAM OPERATIONS AND WATER CONSERVATION

7



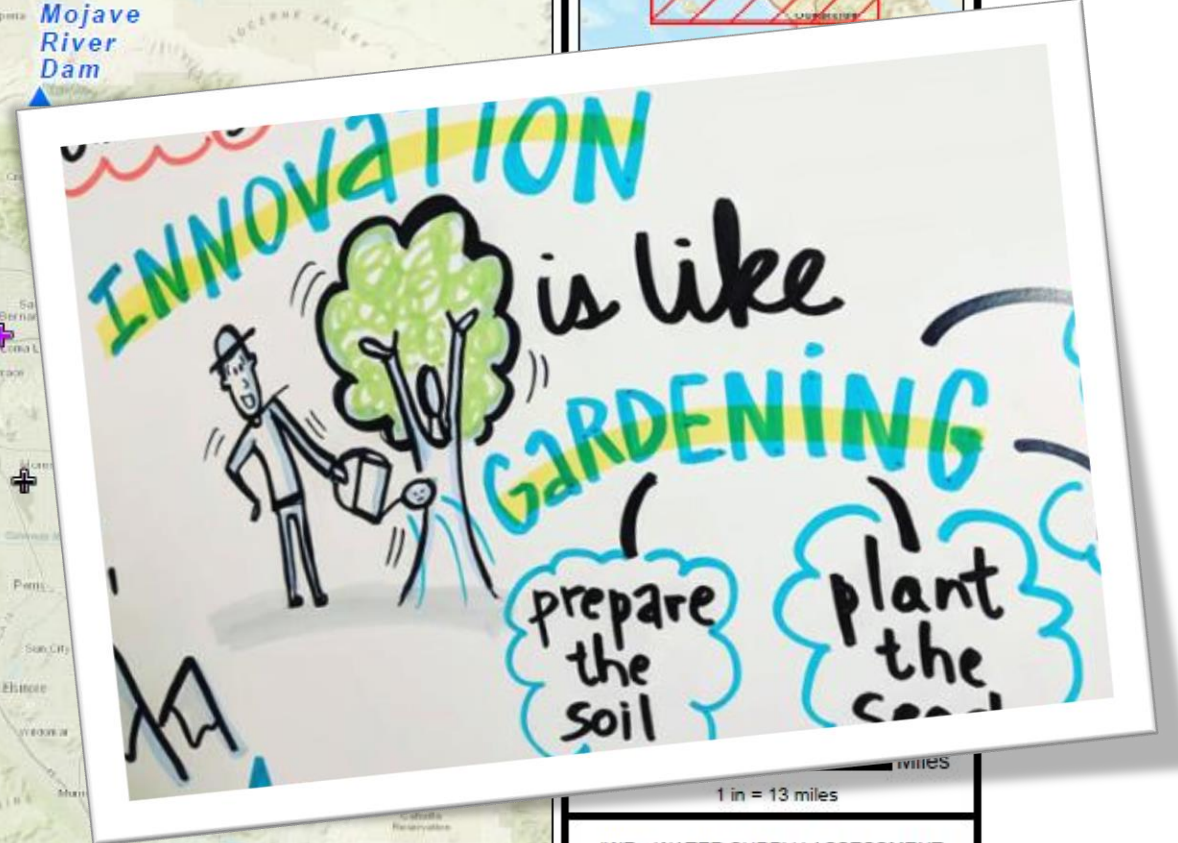
# PRADO DAM BASIN MASTER PLAN UPDATE DRAFT PRIMARY LEASES AND RECREATION



**\*\*Draft boundary and Corps-owned parcels subject to final verification by the Corps**



# FUTURE OPPORTUNITIES?



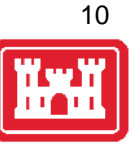




# US Army Corps of Engineers Los Angeles District

[www.spl.usace.army.mil](http://www.spl.usace.army.mil)

10



**COL Aaron C. Barta**  
**District Commander and District Engineer**  
**(213) 452-3961**

**Aaron.C.Barta@usace.army.mil**

Ms Sally DeSimone, Administrative Assistant  
**(213) 452-3964**

**Sally.M.DeSimone@usace.army.mil**

**Mr. David Van Dorpe**  
**Deputy District Engineer for Programs**  
**and Project Management**

**(213) 452-3971**

**David.M.VanDorpe@usace.army.mil**

Mr. Richard Lopez  
Administrative Assistant  
**(213) 452-3974**  
**Rick.Lopez@usace.army.mil**

**Mr. Ed De Mesa**  
**Chief, Planning Division**  
**(213) 452-3783**

**Eduardo.T.Demesa@usace.army.mil**



**Ms. Eileen Takata**  
**Watershed Program Manager**  
**Lead Water Resources Planner**  
**Public Involvement Specialist**  
**951-898-6174**  
**Eileen.K.Takata@usace.army.mil**