

DWR's Role in Sustainable Groundwater Management

"A central feature of these bills is the recognition that groundwater management in California is best accomplished locally."

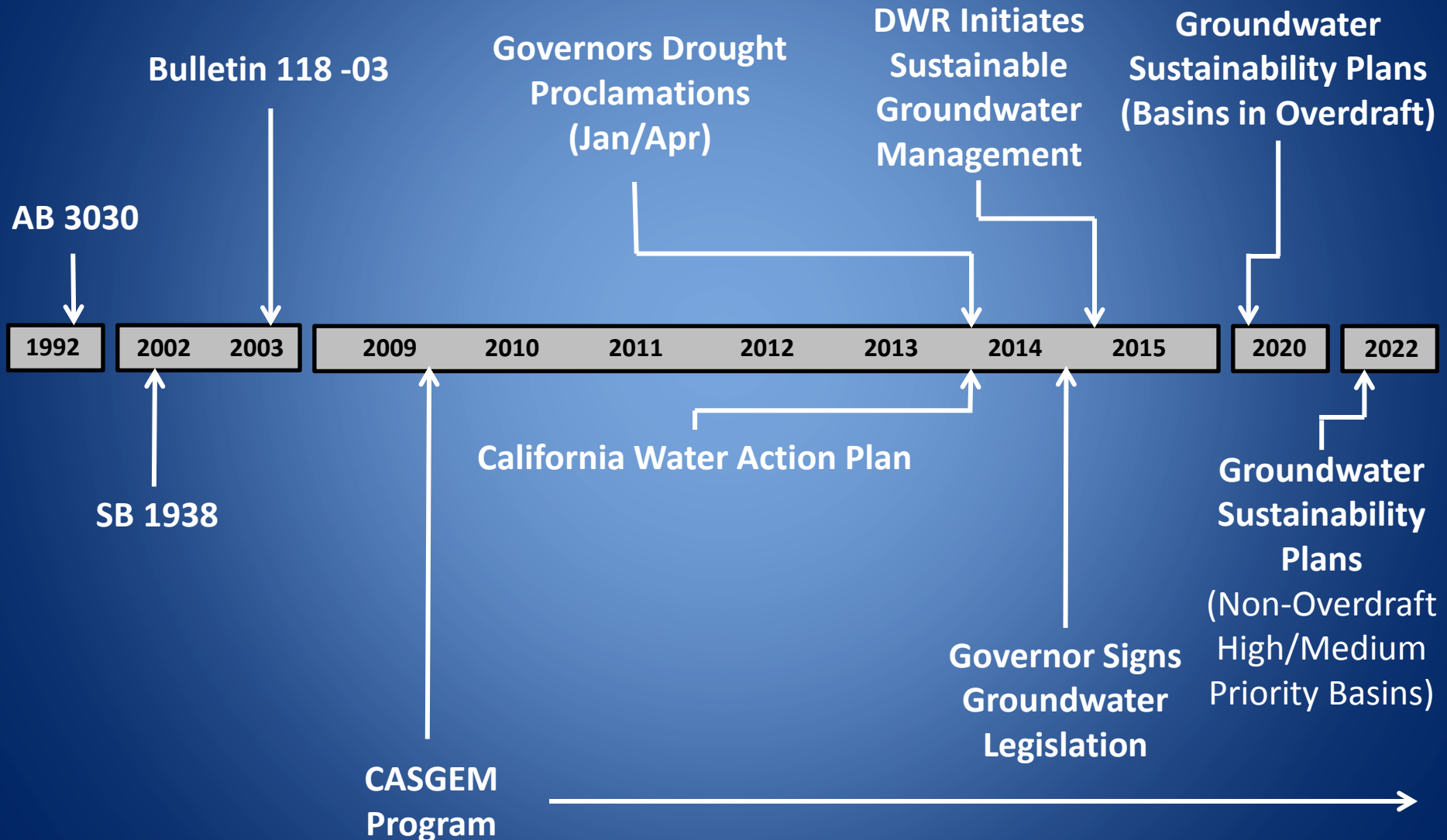
Governor Jerry Brown



CA Department of Water Resources

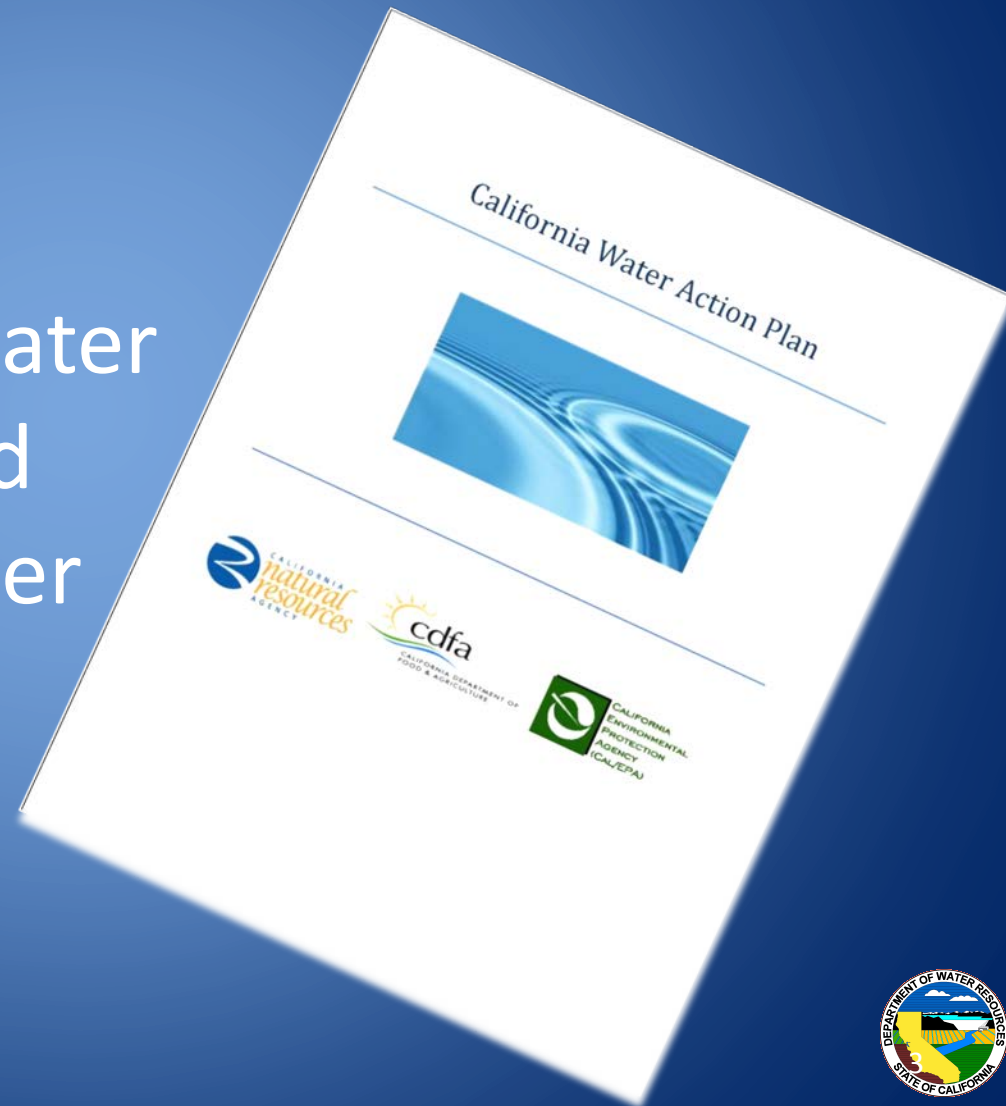


California's Major Milestones toward Sustainable Groundwater Management



California Water Action Plan

Action 6: Expand water storage capacity and improve groundwater management

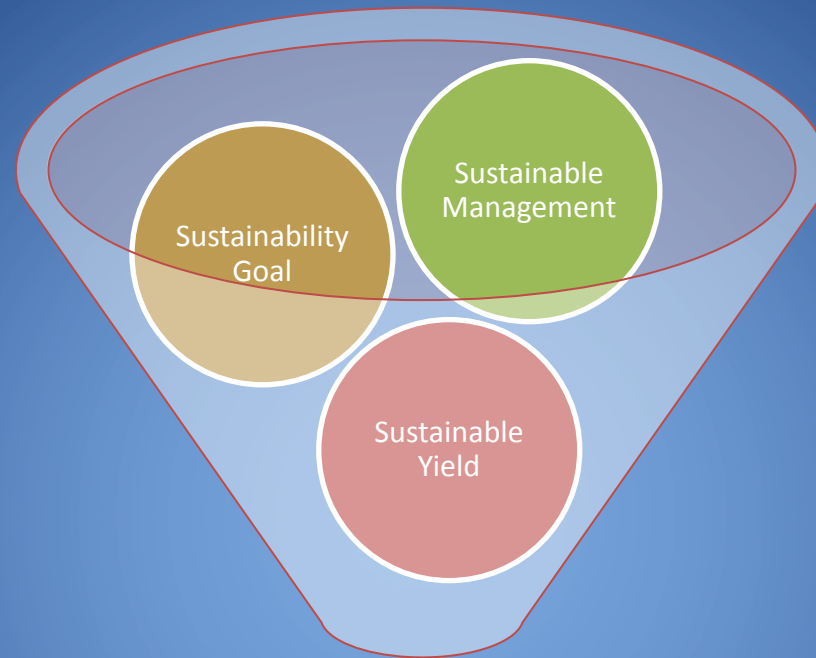


The Sustainable Groundwater Management Act of 2014

- Requires sustainable groundwater management
- Promotes local control



Sustainability:



Prevent

“Undesirable Results”

Lowering of
Groundwater
Levels

Reduction in
Groundwater
Storage

Seawater
Intrusion

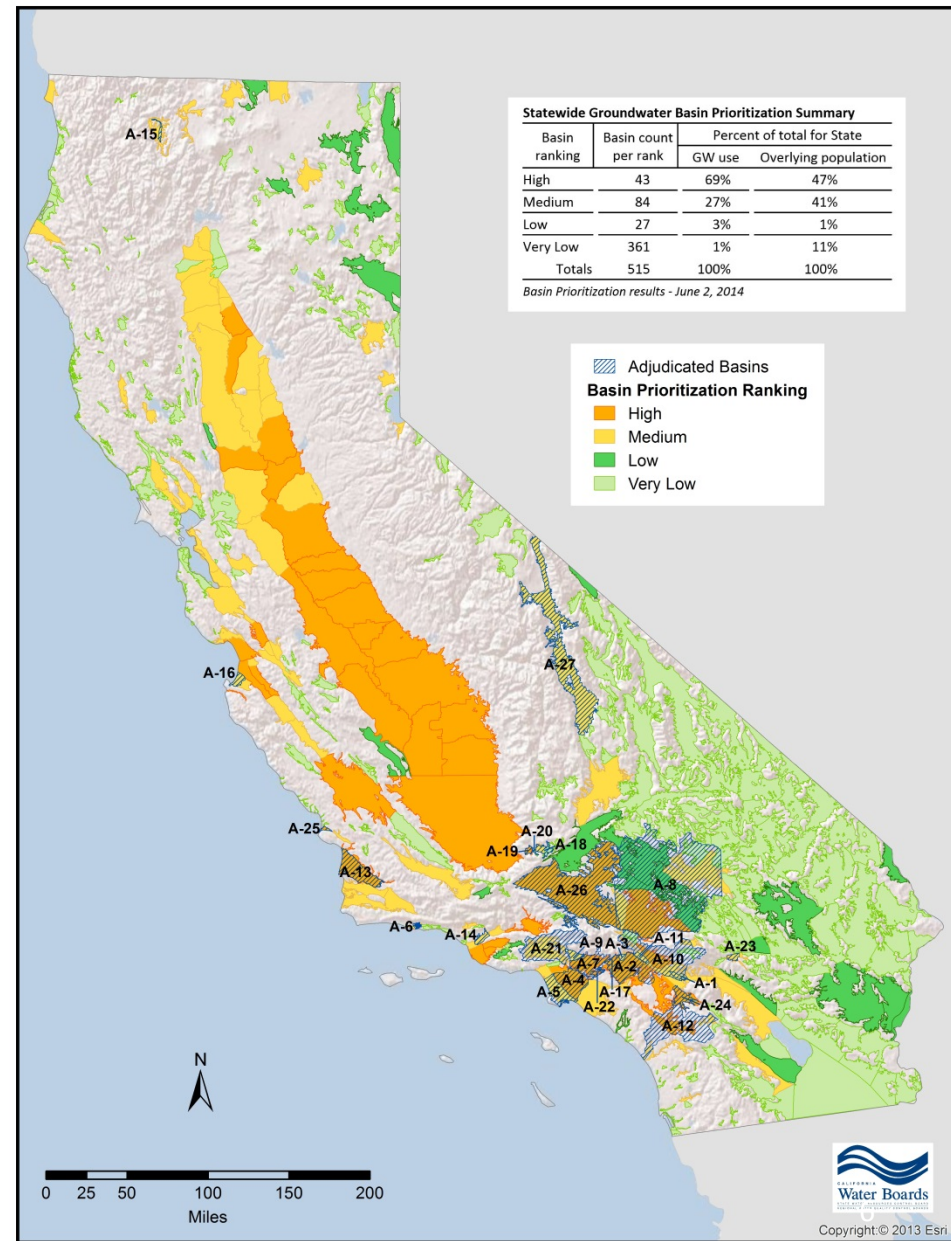
Water
Quality
Degradation

Land
Subsidence

Depletions of
Surface
Water

SGMA 2014

- Requires GW sustainability plans in high- and medium-priority basins
- Authorizes management tools for local agencies
- Creates state “backstop”
- Defines time frame for accomplishing goals
- Does not require adjudicated basins



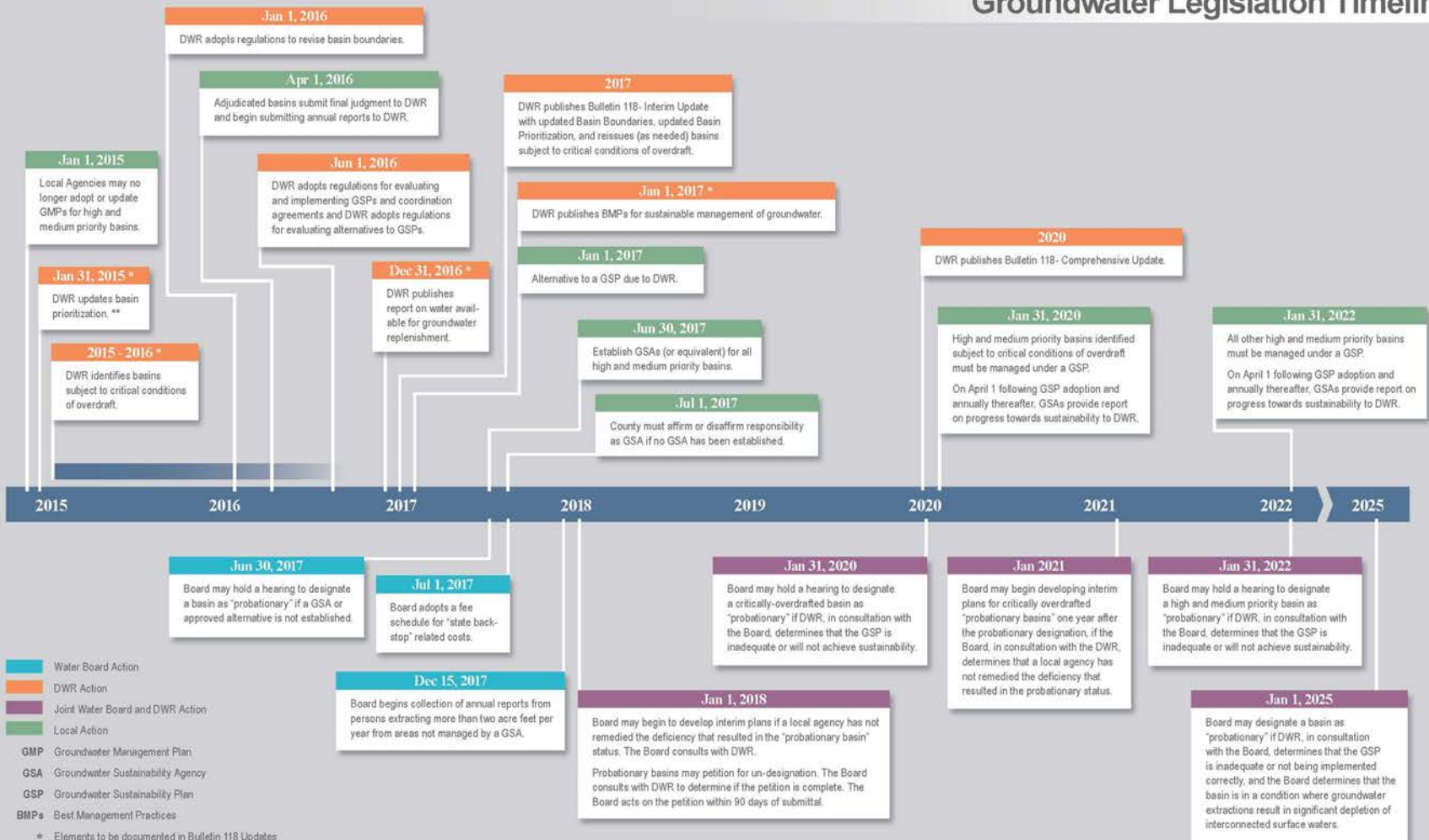
New Local Management Tools

- Requires creation of “groundwater sustainability agencies”
- Empowers GSAs to:
 - Register groundwater wells
 - Measure extractions
 - Require reports
 - Manage extractions
 - Assess fees
- Exempts preparation of local groundwater sustainability plan from CEQA
- Establishes “sustainability goal” over time to guide management



Legislation Timeline

Groundwater Legislation Timeline

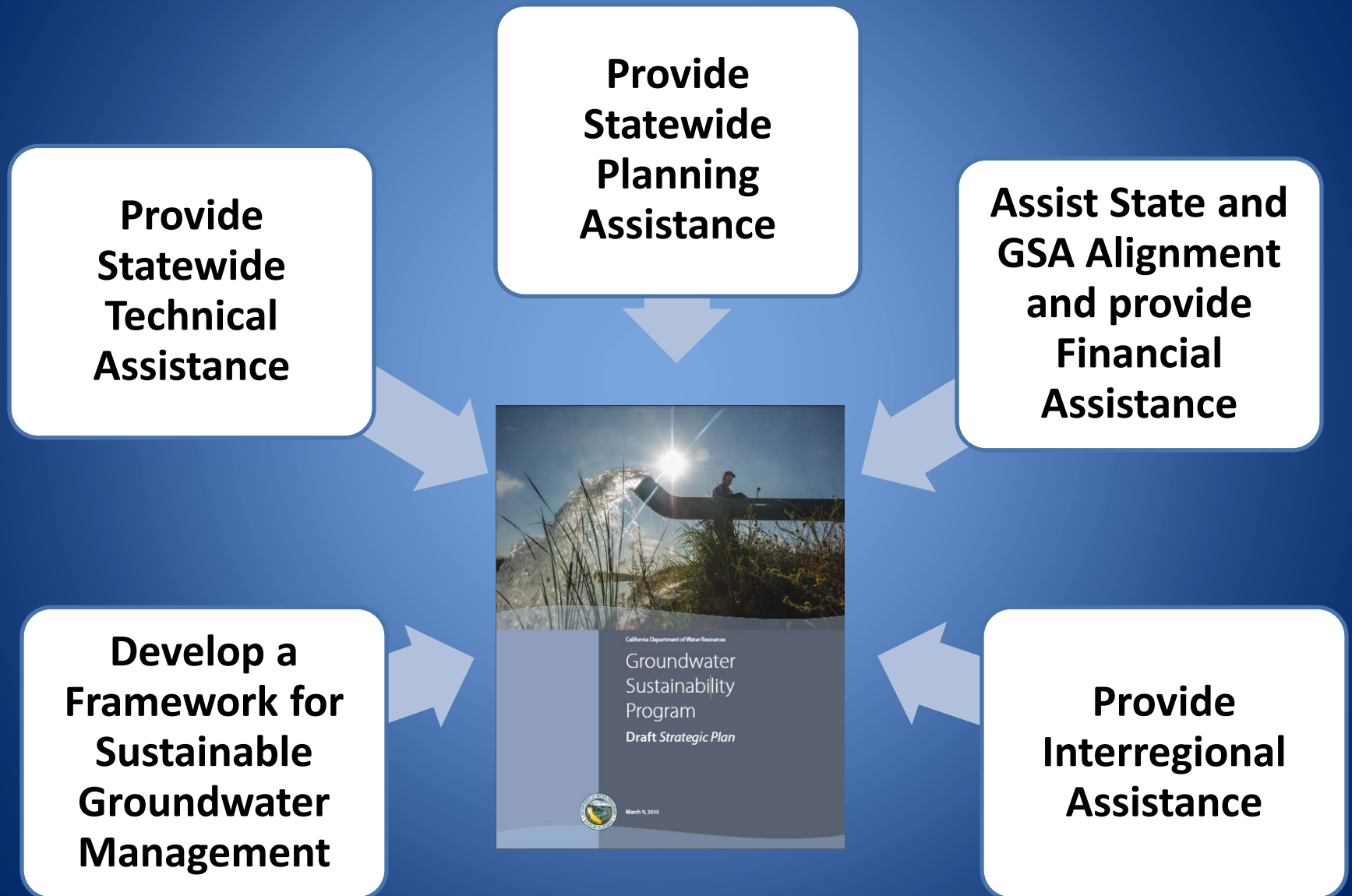


- Water Board Action
- DWR Action
- Joint Water Board and DWR Action
- Local Action

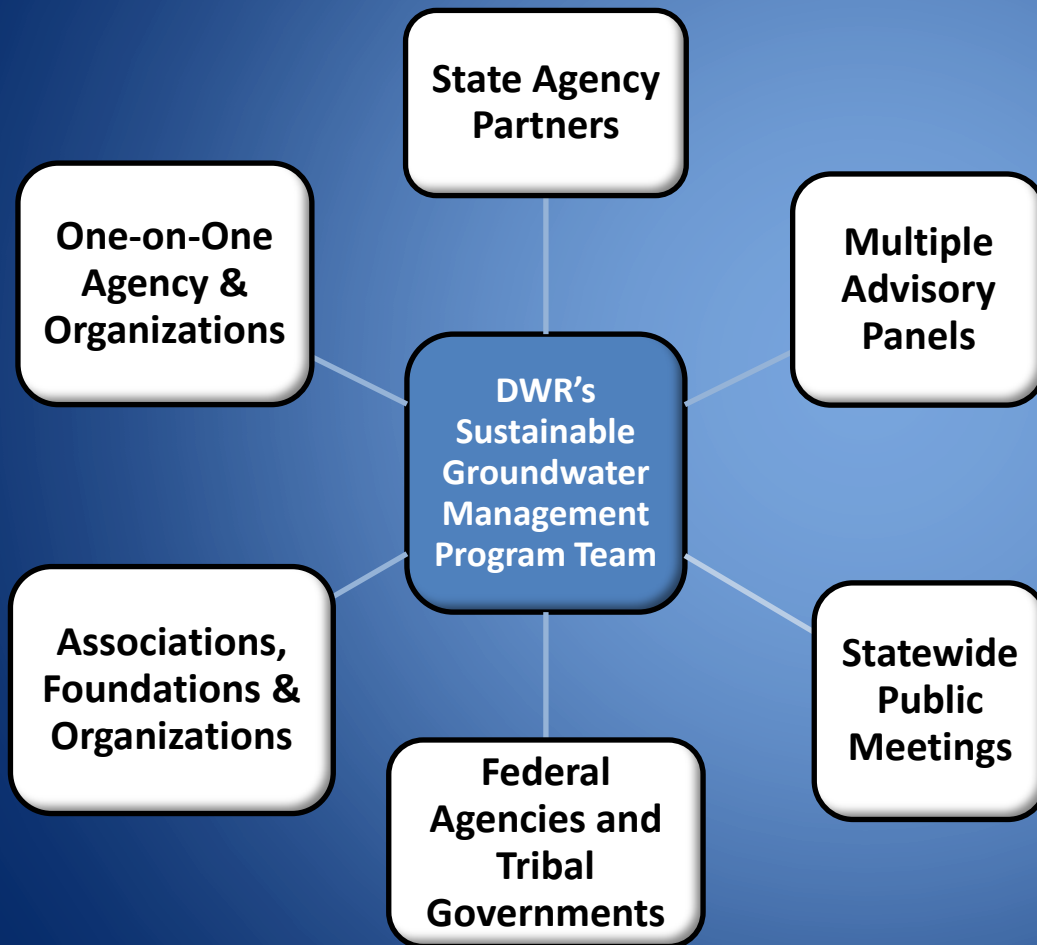
- GMP** Groundwater Management Plan
- GSA** Groundwater Sustainability Agency
- GSP** Groundwater Sustainability Plan
- BMPs** Best Management Practices

* Elements to be documented in Bulletin 118 Updates
 ** Basin prioritization will be updated prior to each Bulletin 118 Update (estimated to be every 5 years)

DWR's Sustainable Groundwater Management Program



SGM Communication and Outreach



ADVISORY PANELS

- Practitioners Advisory Panel
- Tribal Advisory Group
- Non-Governmental Organizations
- Association of California Water Agencies
- Northern California Water Association
- San Joaquin Tributaries Authority
- San Luis & Delta Mendota Water Authority
- Central Coast Area
- RCRC & CSAC
- Agricultural Community
- Tulare Lake Hydrologic Group

DWR Near-term Actions

Jan.
2015

- Basin Priority

Nov.
2015

- Basins in Critical Conditions of Overdraft

Jan.
2016

- Basins Boundary Regulations

Jun.
2016

- GSP & Alternative GSP Regulations

Dec.
2016

- Water Available for Replenishment

Jan.
2017

- Bulletin 118 Interim Update

Jan.
2017

- BMPs for Sustainable GW Management

Basin Boundary Regulations Process

- Phases of Implementation

Scoping

- Notify OAL
- Collect Issues from Stakeholders
- Coordinate with SWRCB & CWC

Draft Framework

- Public Listening Sessions
- Present and Receive Input from Advisory Groups and Public

Draft Emergency Regulations

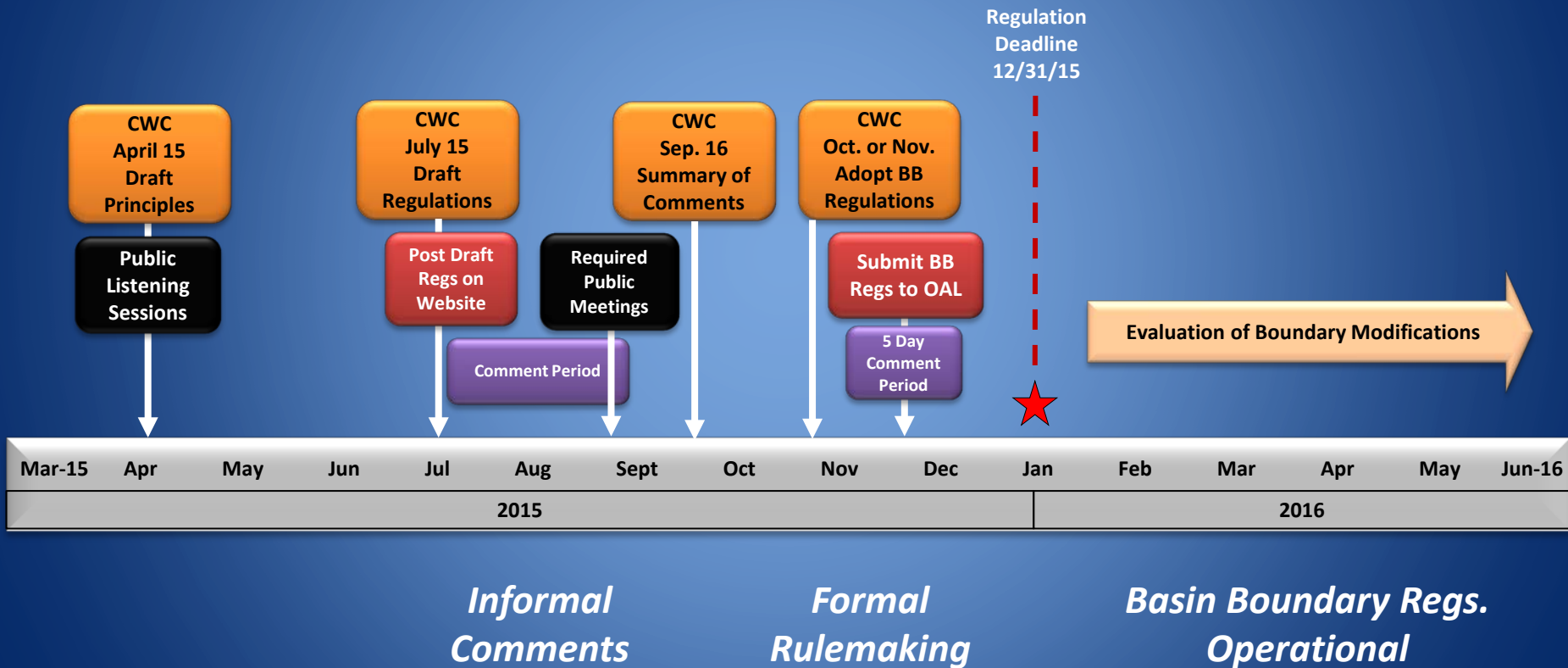
- Required Public Meetings
- Present and Receive Input from Advisory Groups and Public

Adopt Emergency Regulations

- CWC Approval
- Noticing and Submittal to OAL

Input and Feedback from the CWC and SWRCB

Basin Boundary Regulations Estimated Timeline



GSP/ALT Regulations Process

- Phases of Implementation

Scoping

- Notify OAL
- Collect Issues from Stakeholders
- Coordinate with SWRCB & CWC

Draft Framework (Topic Based)

- Public Listening Sessions
- Present and Receive Input from Advisory Groups and Public

Draft Emergency Regulations

- Required Public Meetings
- Present and Receive Input from Advisory Groups and Public

Adopt Emergency Regulations

- CWC Approval
- Noticing and Submittal to OAL

Input and Feedback from the CWC and SWRCB

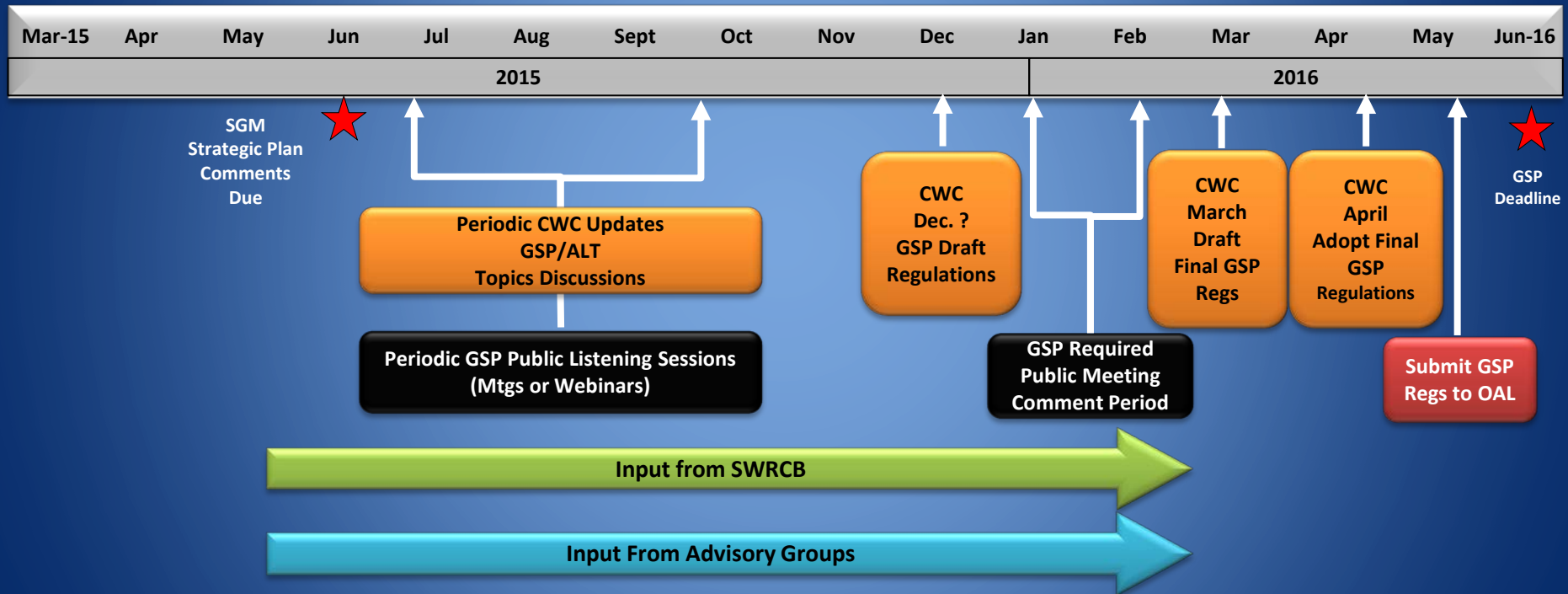
CWC – California Water Commission

SWRCB – State Water Resources Control Board

OAL – Office of Administrative Law

GSP/ALT Regulations

Estimated Project Timeline



GSP Issue Topics for Regulation Development

Phase 1 –
Scoping
(Collection
of Issues)



Phase 2 –
Draft
Framework
(Present
and Receive
Input from
Advisory
Groups and
Public)



The State Water Board's Role in Sustainable Groundwater Management



The “Backstop” State Board Intervention

After	Intervention Trigger
June 30, 2017	Areas without a GSA begin reporting well locations and extraction data to SWRCB; can begin probationary basin designation 180 days later.
Jan. 31, 2020	Can begin probationary basin designation in critically overdrafted basins with no GSP or where GSP is inadequate
Jan. 31, 2022	Can begin probationary basin designation in other high/medium priority basins without a GSP or inadequate GSP and basin is in long-term overdraft
Jan. 31, 2025	Probationary basin designations where GSP is inadequate and significant depletions of interconnected surface waters

SB13 (Pavley, Chapter 255)

September 2015

- Technical changes to SGMA
 - Basin priority changes
 - GSA reporting requirements for local agencies
 - GSA reporting requirements for DWR
 - GSA authorities



Web Resources

- **DWR Sustainable Groundwater Management (SGM)**
<http://www.water.ca.gov/groundwater/sgm/index.cfm>
- **DWR GSP Emergency Regulation Website**
<http://www.water.ca.gov/groundwater/sgm/gsp.cfm>
- **Subscribe to DWR SGM Email List**
<http://www.water.ca.gov/groundwater/sgm/subscribe.cfm>
- **DWR Region Office Contacts**
<http://www.water.ca.gov/groundwater/gwinfo/contacts.cfm>
- **Questions or Comments**
sgmps@water.ca.gov