

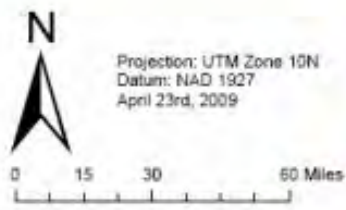
Moving the Boundaries: Watershed Partnerships

Watsonville Sloughs/Lower Pajaro A Success Story... in the Making

Jim Robins, *Alnus* Ecological
Karen Christensen, RCD of Santa Cruz Co.

April 4, 2013

Regional Setting of the Greater Monterey County IRWMP



Central Coast IRWMP Regions

- Greater Monterey County
- Monterey Peninsula, Carmel Bay and South Monterey Bay
- Northern Santa Cruz County
- Pajaro River Watershed
- San Luis Obispo County
- Santa Barbara County
- Roads
- RWQCB 3 boundary
- County lines
- Water bodies

Community Water Dialogue: Principles

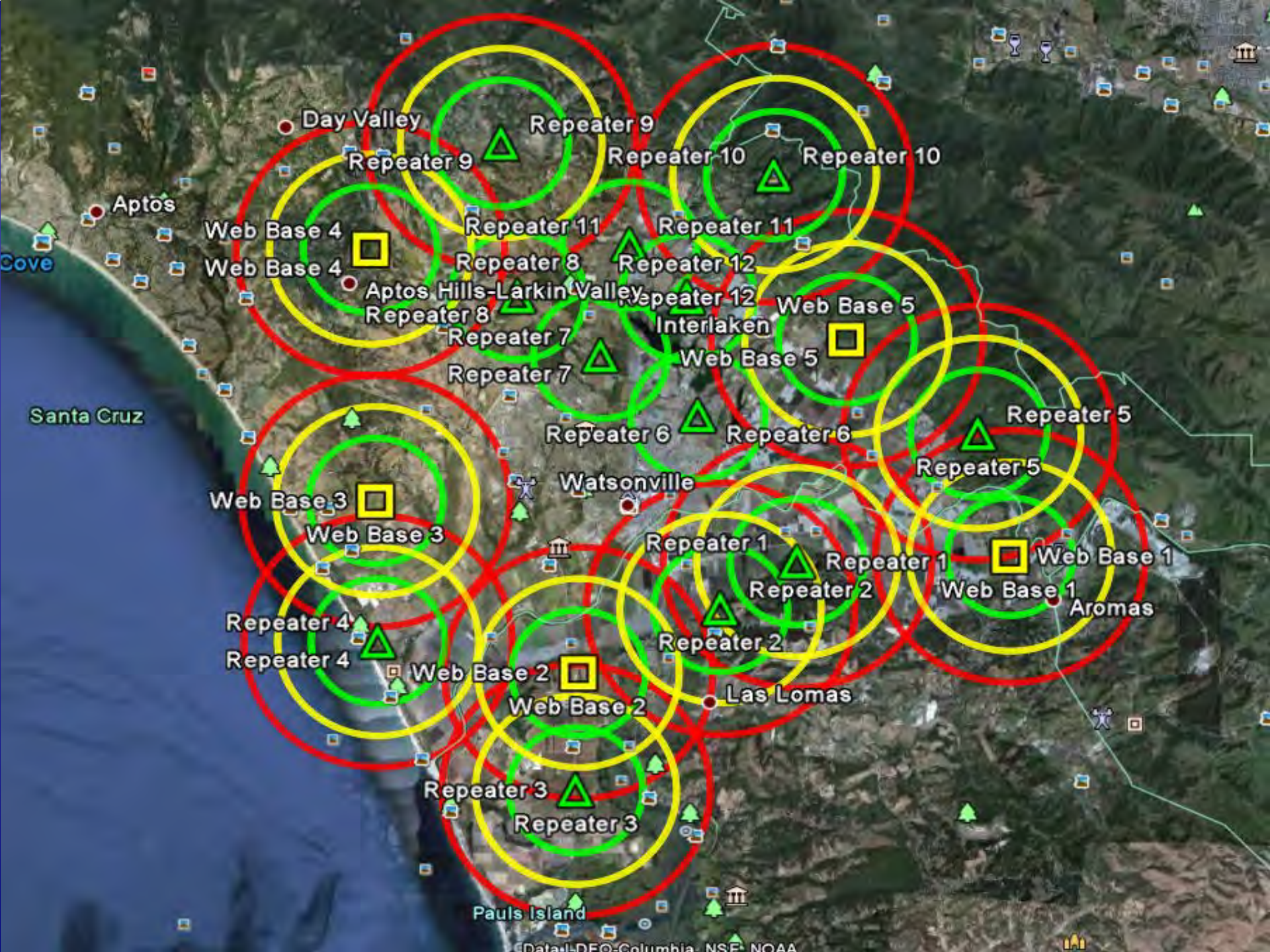
- Recognize the basin is in overdraft – it is a community problem
- No silver bullet
- Imported water is not the solution
- Ag viability is part of the solution
- Burden will be shared across the landscape – shared sacrifice

Community Water Dialogue: Projects

- Managed aquifer recharge
- Planning for College Lake
- Ag Water Conservation Practices
- CIG Grant & Partnership with Driscoll Berries
- Ag Water Quality Improvement Practices (NRCS)
- etc

Hortau





Watsonville Sloughs

Watsonville, CA

Lower Pajaro River

Data SIO, NOAA, U.S. Navy, NGA, GEBCO

Google earth

Coastal America Award (2011)

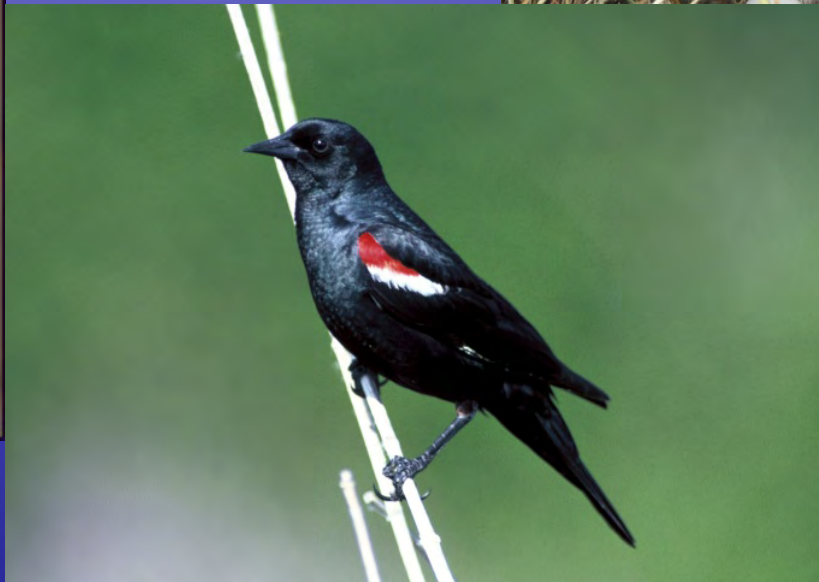


Urgent Issues

- Water Supply Reliability Issues
- TMDL based on 303d listing looming
- RWQCB Ag Waiver Adoption
- Growers/landowners experiencing chronic flooding
- Ag land values going thru the roof (upwards of \$40k/ac for non-flood prone strawberry fields along the sloughs)
- Food safety issues hitting prime time
- Pending litigation to address flooding and economic impacts...







Processes: IWRP & IRWM



IWRP Goal

**Use Collaborative and Integrated
Approach with Diverse Partners to Address
WATERSHED HEALTH
from Headwaters to Lagoons**

Foundational Components of the IWRP Process

- Building **trust** between and among regulatory community partners and private landowners
- **Balancing** missions of varied/various stakeholders (public and private, infrastructure and natural resources, etc)
- Searching for **win:win** solutions that folks can get behind and support
- Leveraging **capacity** across diverse local stakeholders and working toward efficiency (i.e. IWRP as the hub for support on technical, regulatory, or funding issues related to conservation projects -> one stop shop).

IWRP Points of INTEGRATION



A Perfect Fit: IWRP & IRWM

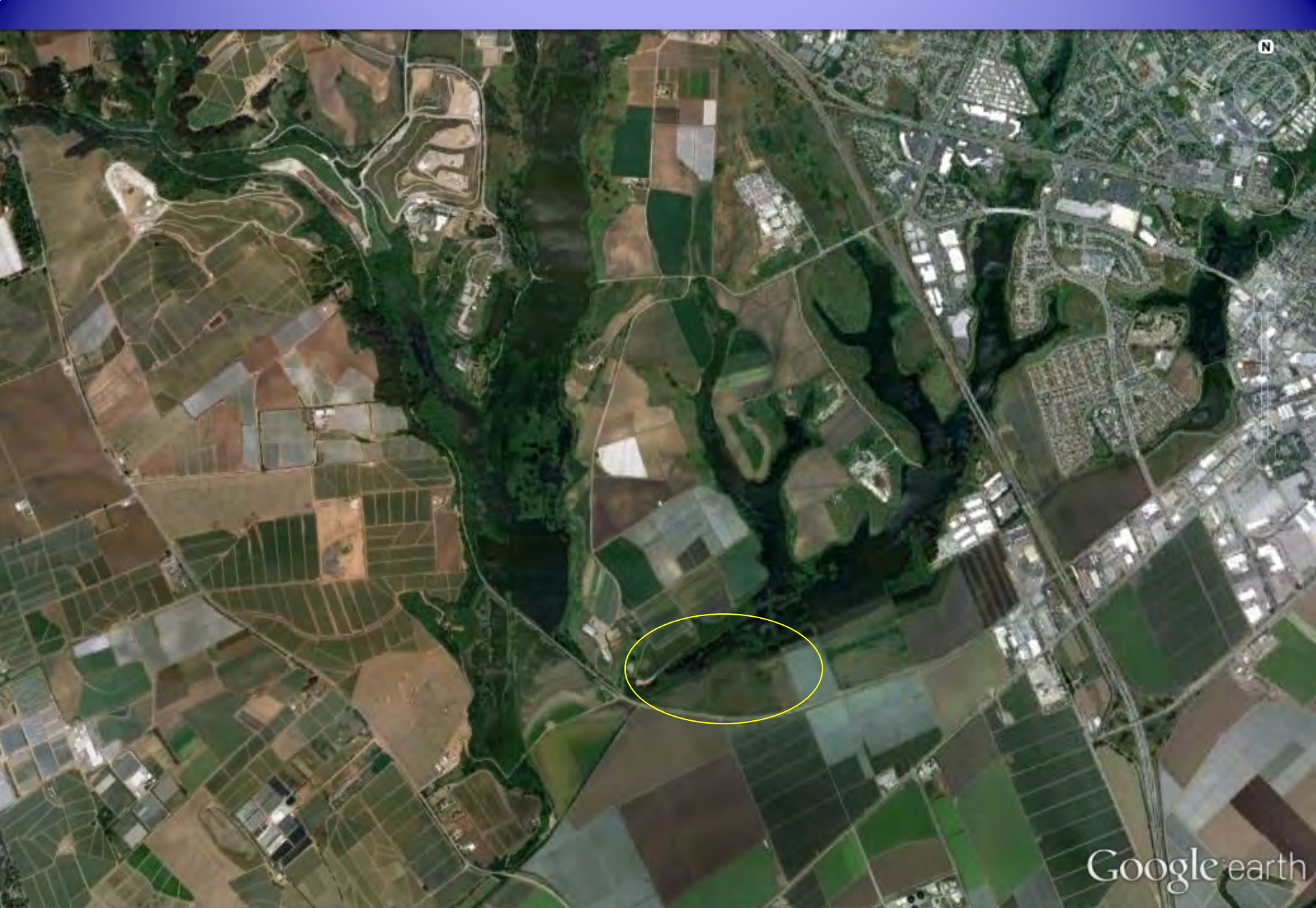
I W R P



I R W M P

Broad Partnerships





N

Google earth

2009 Stimulus Act \$ through
NRCS Floodplain Easement
Program



2011 Property acquired by the
Land Trust of Santa Cruz County



Watsonville Sloughs Hydrologic Study (2011-2013)

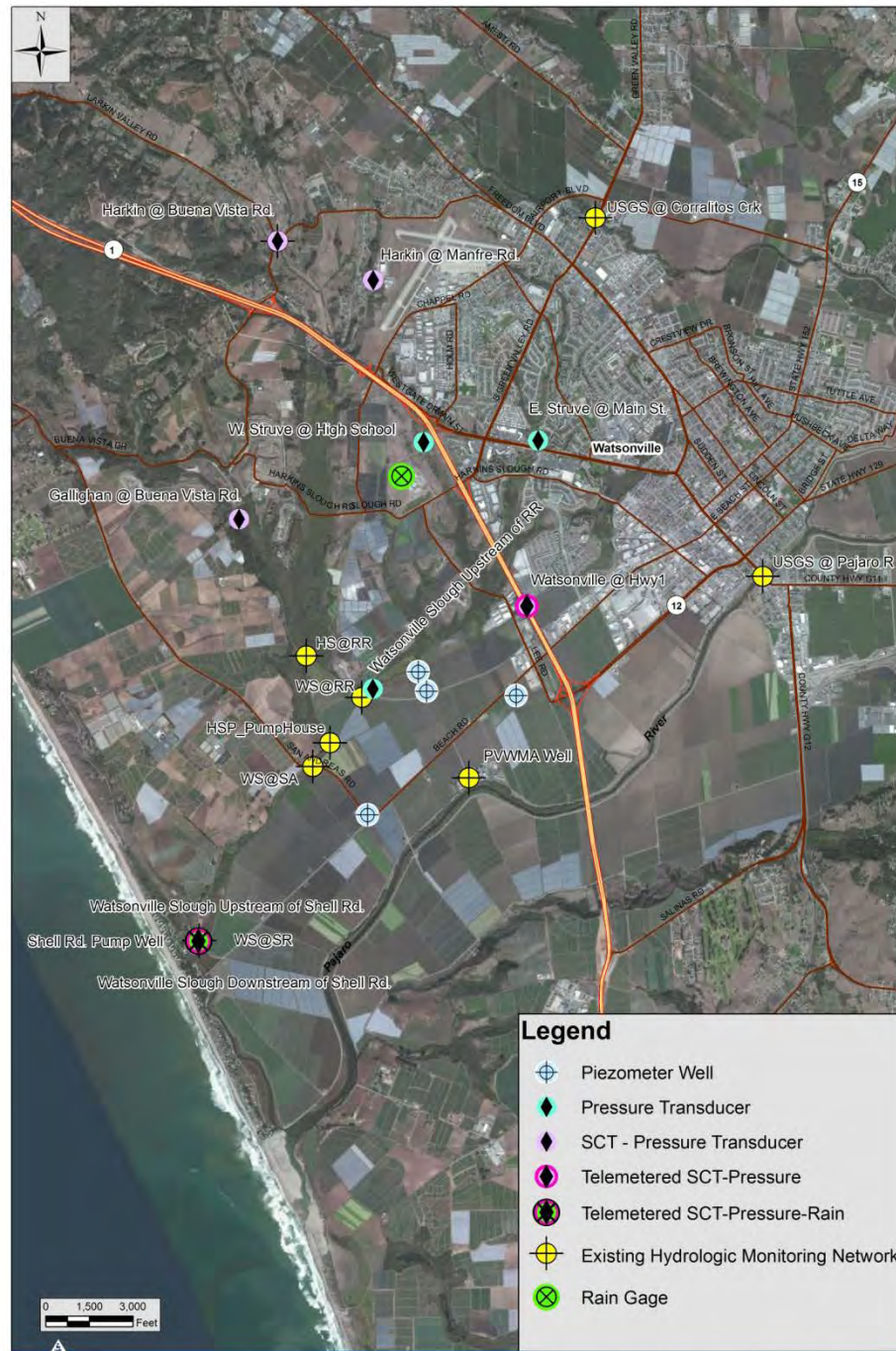


Figure 1. Existing hydrologic monitoring stations

IWRP/IRWM Accomplishments

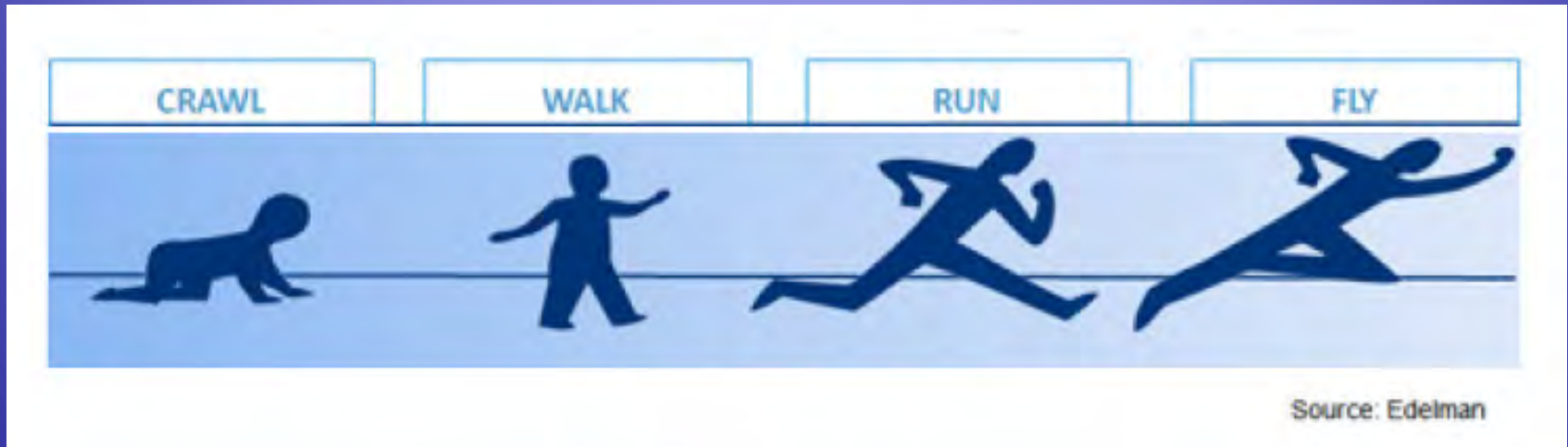
- 2011 Coastal America Award winner for excellence in collaborative conservation (for work in the Sloughs) – Executive Branch of US Gov't
- Riparian Challenge Award – American Fisheries Society
- **80+** multi-benefit conservation projects designed and permitted
- Leverage over **\$1 million/yr over 10 years** for planning & implementation
- **70+ projects constructed** between 2005-2012
- Built lasting partnerships to address current and future resources issues (water supply, water quality, ag viability, forestry, and recovery of t&e species)

IWRP/IRWM Lessons Learned

#1- You need a strong and effective steering team or local lead to:

- 1) Bring skills, trust, and comfort to project proponents and TAC members**
- 2) Keep the program focused on the resources... eyes on the prize**
- 3) Bring in new partners (private and public landowners, local agencies, etc)**
- 4) Troubleshoot and overcome the many obstacles that will be encountered**
- 5) Maintain and "grow" integration**

IWRP/IRWM Lessons Learned



#2- It takes patience and commitment to the long-term to build a successful program...the snowball effect is REAL.

IWRP/IRWM Lessons Learned:



#3- Face time with the TAC is critical...the best cross-pollination and discussion happens in person and in the field. Regular and open dialogue with TAC keeps the Program alive and relevant

IWRP/IRWM Lessons Learned:



We have the decision-making at our board meetings down to a science.

#4- Avoid too much process and too little action...sometimes you just have to move forward and start doing stuff

