

-----in Civilizations.....

“Demography is Destiny”
French philosopher Auguste Comte



WATER EDUCATION
FOUNDATION

....but for California's historical
development...

“Geography is Destiny”



WATER EDUCATION
FOUNDATION

- Geography:

- Determined location of resources leading to California's development

- Gold
 - Arable land
 - Early irrigation systems
 - Natural harbors
 - Film industry (locations and weather)
 - WWII industrialization – economic geography

AND, WATER



**The story
of
California
is the
story of
water.**





The Gold Rush was the start of a philosophy of putting California's water to work





Hydraulic Mining

1853 - Used powerful jets of water to blast away hillsides



Malakoff Diggins (South Yuba River) - mined 100,000 tons of gravel per day and used 16 billion gallons (32,000 acre-feet) of water per year.

11 million ounces of gold (worth \$9.7 billion) by the mid-1880s.





Arteries of Commerce

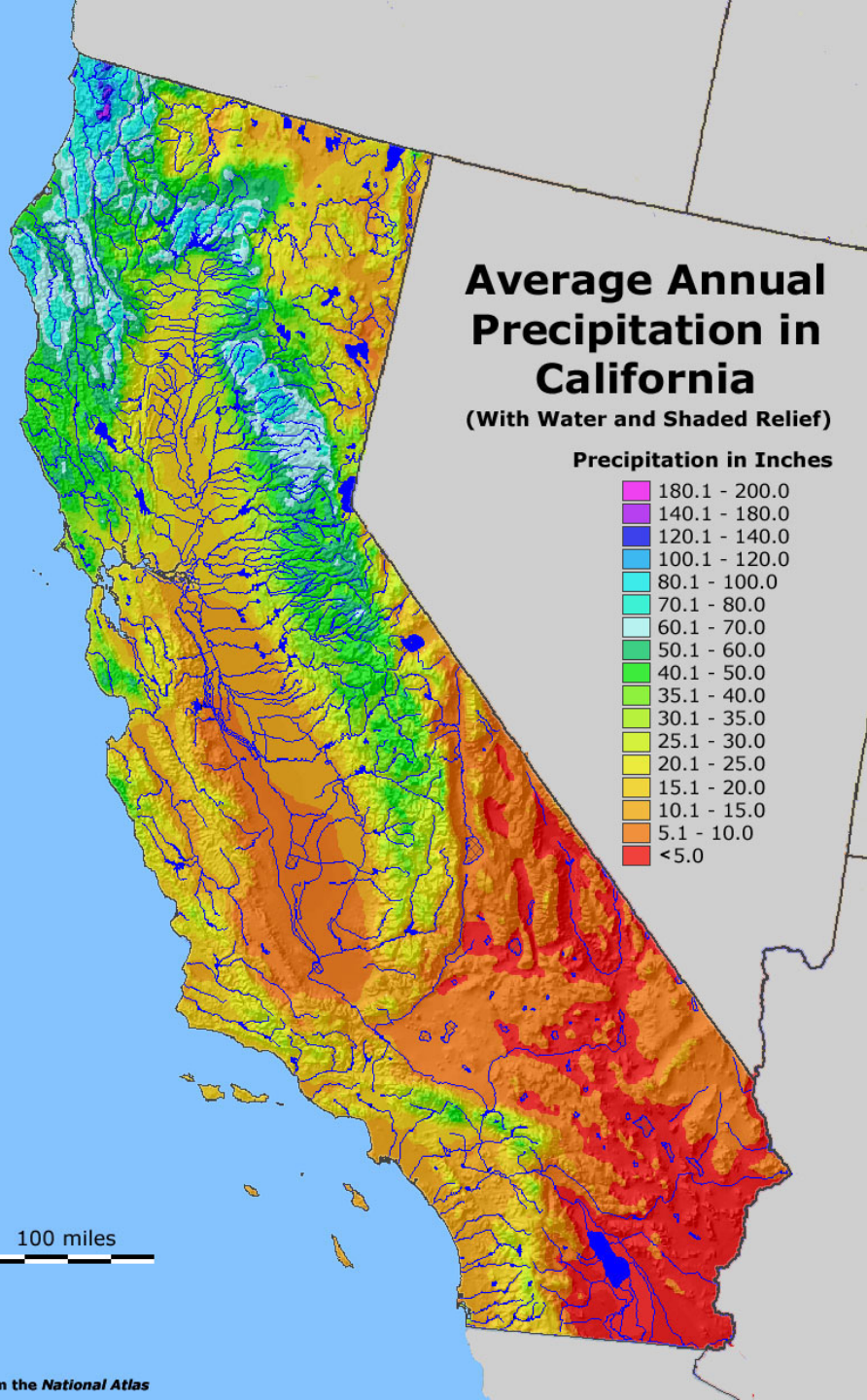


WATER EDUCATION
FOUNDATION



WATER EDUCATION
FOUNDATION

California Hydrology



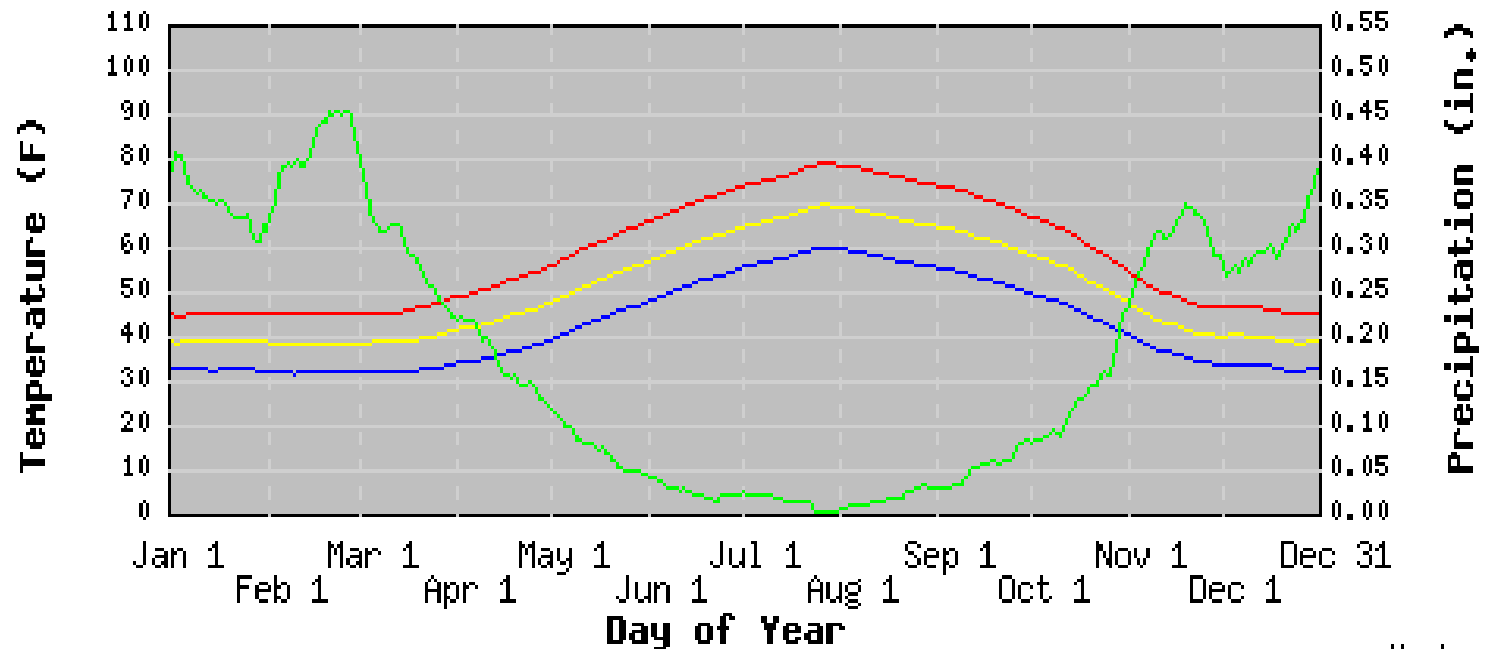
Wet in north
Dry in south

Greatest population
in south



WATER EDUCATION
FOUNDATION

BLUE CANYON, CALIFORNIA (040897)
1971-2000 30 Year Average



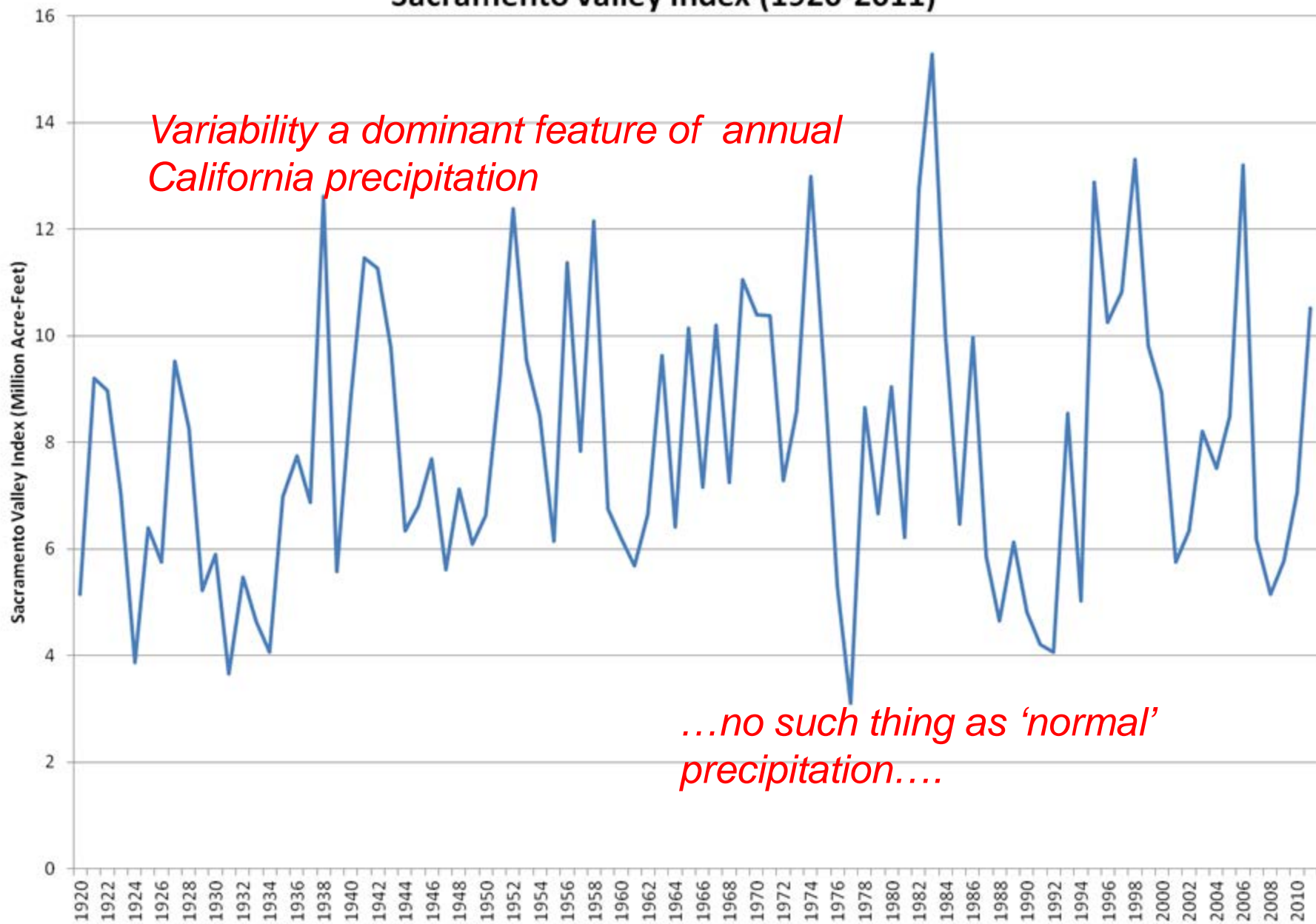
— Max Temp — Ave Temp — Min Temp — Precipitation

Western
Regional
Climate
Center



WATER EDUCATION
FOUNDATION

Sacramento Valley Index (1920-2011)



Variability a dominant feature of annual California precipitation

...no such thing as 'normal' precipitation....

Drought Water Years 1976/1977

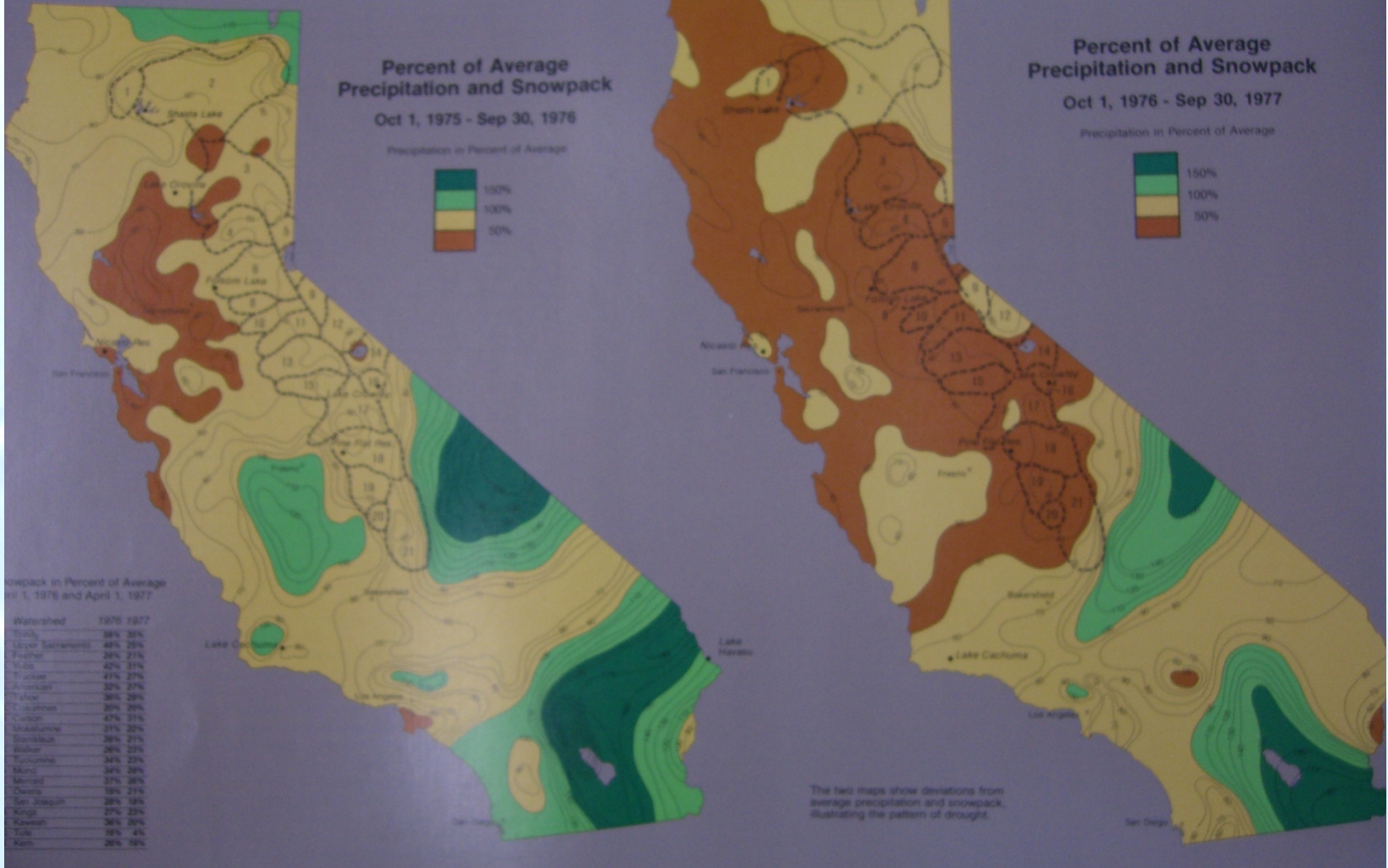
Percent of Average Precipitation and Snowpack Oct 1, 1975 - Sep 30, 1976

Precipitation in Percent of Average



Percent of Average Precipitation and Snowpack Oct 1, 1976 - Sep 30, 1977

Precipitation in Percent of Average



Snowpack in Percent of Average Oct 1, 1976 and April 1, 1977

Watershed	1976	1977
Trinity	38%	35%
Upper Sacramento	48%	20%
Feather	26%	21%
Yuba	42%	31%
Tule	41%	27%
Grassland	32%	27%
Trinity	36%	29%
T. Columbia	20%	20%
Trinity	47%	31%
Madroño	21%	25%
San Joaquin	26%	21%
Walker	26%	22%
Tulare	34%	23%
Mono	24%	26%
Merced	21%	26%
Delta	18%	21%
San Joaquin	28%	18%
King	21%	23%
Klamath	36%	26%
Tule	18%	4%
Kern	26%	18%

The two maps show deviations from average precipitation and snowpack, illustrating the pattern of drought.

Water Balances

Monthly differences between the natural moisture supply and demand are portrayed by the Climatic Water Balances.

Reservoir Storage

Storage during the drought years is compared to the average monthly storage of these reservoirs during the preceding decade, 1965-1975. The table below each graph gives the actual reservoir level in thousands of acre-feet.



A three-year drought has taken its toll on California and has spread rapidly across the state in 2014

Intensity:

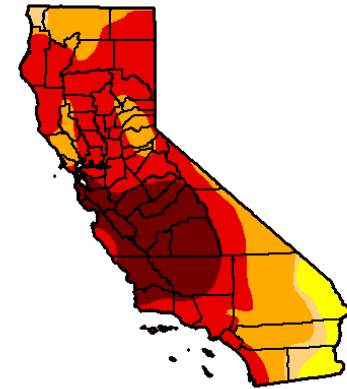
-  D0 Abnormally Dry
-  D1 Moderate Drought
-  D2 Severe Drought
-  D3 Extreme Drought
-  D4 Exceptional Drought

The Drought Monitor focuses on broad-scale conditions. Local conditions may vary. See accompanying text summary for forecast statements.

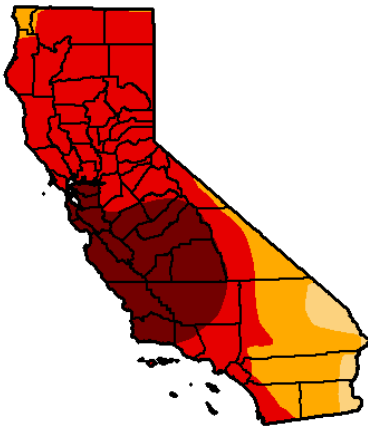
January
2014



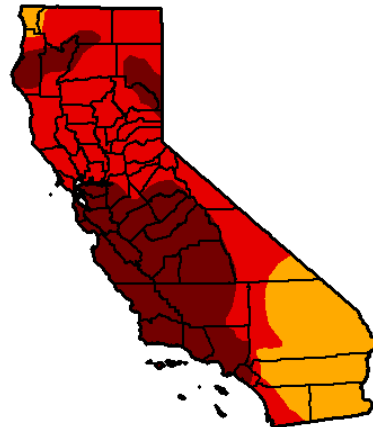
March 2014



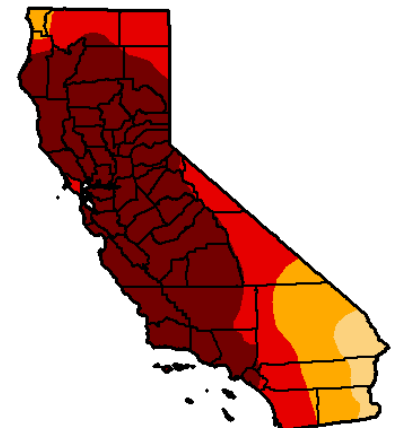
May



July 2014



September
2014



The Great Projects



They were built to alleviate drought. They were built to protect against floods. And as California boomed, projects were built to generate electricity and move the water from where it occurred to where it could provide the most benefit for a booming economy – in the fields and cities.

At the turn of the century, John Muir played an influential role in gaining national park status for the beautiful Yosemite Valley. But the conservationist – standing posed with President Theodore Roosevelt high above Yosemite Valley – failed to win protection for another valley just to the north, the Hetch Hetchy Valley.

The city of San Francisco selected Hetch Hetchy in 1901 as the place to dam the Tuolumne River, conveying

its pristine water by gravity to San Francisco.

Controversy over developing the valley, which was within the confines of Yosemite National Park, brewed for decades with the fight against the project led by conservationist and Sierra Club founder Muir.

In 1913, Congress passed the Raker Act, authorizing the project. Muir died two years later and in 1923, with completion of O'Shaughnessy Dam, the Hetch Hetchy Valley was flooded. •

California Water Development



Hetch Hetchy System
San Francisco PUC
1913 - Raker Act

Los Angeles Aqueduct
Los Angeles DWP
1913

Mokelumne River Aqueduct
East Bay MUD
1929

Central Valley project
U.S. Bureau of Reclamation
1940 (C.C. Canal first)

Colorado River Aqueduct
MWD of So. Cal.
1941

State Water Project
California DWR
1960 - Burns Porter Act

Major Water Projects



Federally Funded Projects

- 35 federally funded dams, reservoirs and canals. Built by U.S. Army Corps of Engineers and U.S. Bureau of Reclamation



Shasta Dam

- Central Valley Project (CVP), which begins on the Sacramento River at Shasta Dam and ends near Bakersfield.



Federally Funded Projects - CVP



- 💧 90% used to irrigate farms in Central Valley
- 💧 Some water to urban residents in the Bay Area

Financing

- 💧 1902: Reclamation Act – 160 acre service limitation
- 💧 1982: Act increased service limitation to 960 acres
- 💧 1992: CVPIA added environment as specific purpose created water account for environment



Committed to the State Water Project



Governor Pat Brown was elected in 1958.

Gov. Brown made passing the State Water Project a priority of his administration.

“I was absolutely determined that I was going to pass this California water project.”



Burns-Porter Act



1959 - The state Legislature authorized construction of the State Water Project through the California Water Resources Development Bond Act, also known as the Burns-Porter Act

State Water Project



Gov. Pat Brown at Oroville Dam

1961 – construction begins

Facilities were built from north to south – Oroville Dam to Southern California.

The State Water Project is the largest state-financed water project ever



WATER EDUCATION
FOUNDATION

State-Funded Projects - SWP

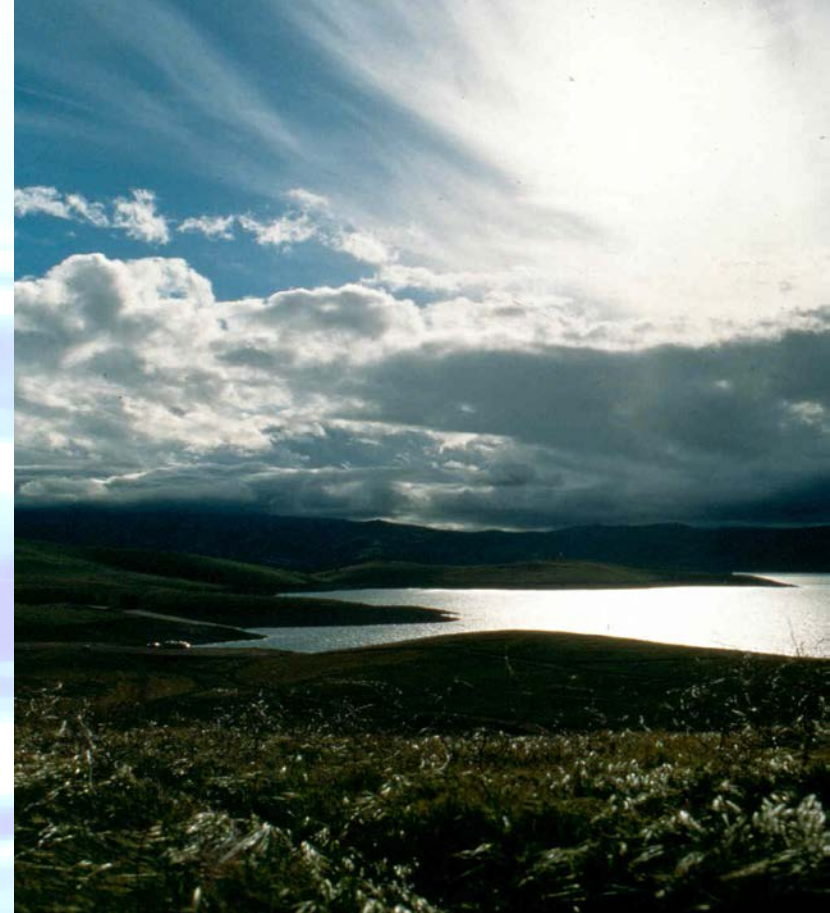


- State Water Project (SWP) consists of 29 dams and reservoirs and runs almost 600 miles from Northern- to Southern California.
- Planned to deliver 4.2 million acre-feet; actually delivers less than 3.0 million acre-feet – reliability diminished due to regulatory actions.
- About of deliveries to agriculture in the San Joaquin Valley and half for urban Southern California and the Bay Area.



Financing the SWP

- 💧 1960 - \$1.75 billion bond
- 💧 29 contractors pay all costs, including bond interest, energy and transmission charges – whether water delivered or not.
- 💧 No acreage limitations.



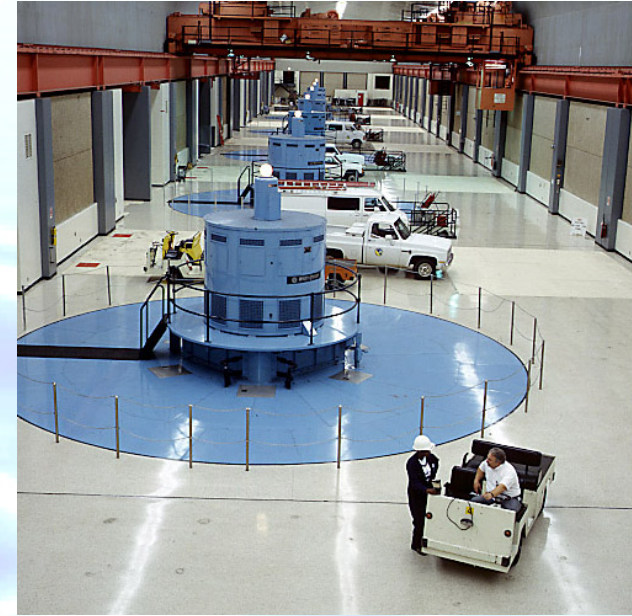
San Luis Rese



WATER EDUCATION
FOUNDATION

Water and Energy

- 20% of state's electricity is used to bring water to consumers and send it away for sewage treatment.
- SWP is single-largest power consumer in California
- SWP is the fourth largest power generator in California, generating about two-thirds of electricity to run its facilities.



Hyatt Powerplant below Lake Oroville is in a cavern the size of two football fields.



Operation of the CVP/SWP

- Coordinated operations – joint responsibilities for Delta Water Quality Management
- Upstream reservoirs capture water during wet season and snow runoff



Operation of the CVP/SWP

- Water delivered to service areas by contract, subject to agreements with *senior* rights holders
 - *Sacramento River Settlement Contractors (CVP)*
 - *San Joaquin River Exchange Contractors*
 - *North Delta Water agency (SWP)*
 - *City of Sacramento*
 - Project contractors:
 - Tehama Colusa Canal, Sacramento area contractors, Contra Costa WD,
 - Export service: San Luis Delta Mendota Water Authority, Santa Clara Valley WD
- Reservoir storage, natural river conditions and regulatory requirements determine water available for export

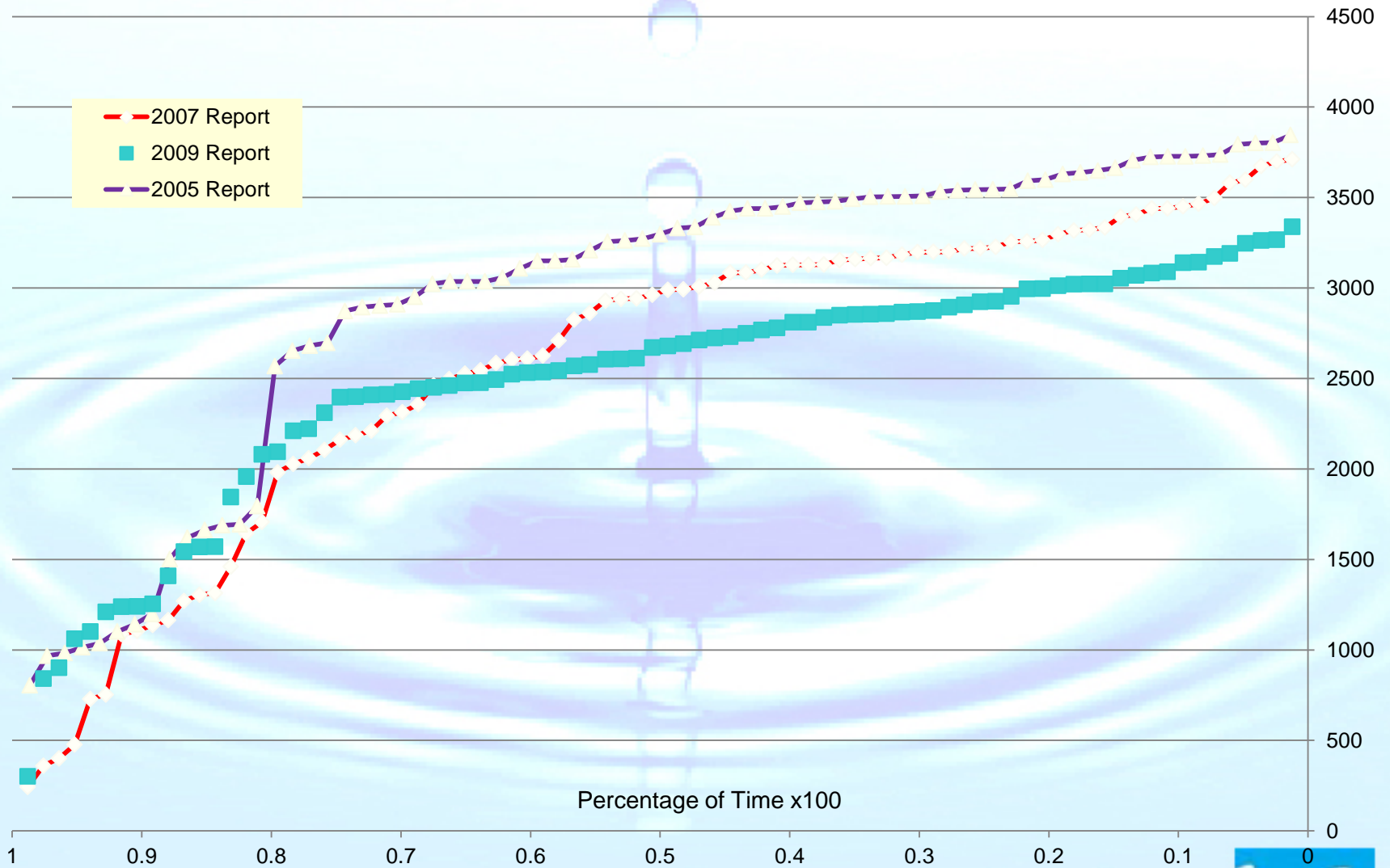


Operation of the CVP/SWP

- Export supply determined by:
reservoir/river supply - instream flow requirements - delta flow/water quality – export pumping limitations vs. demand.
- *If demand exists and there is pumping capacity within requirements, water can be pumped.*
- *Shift from demand limited system to regulatory constrained system*



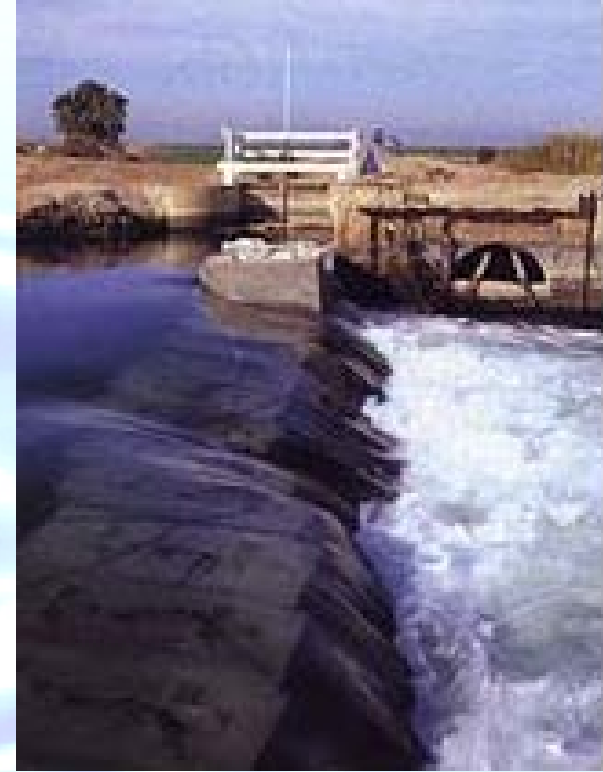
Regulatory Restrictions Have Degraded SWP Water Reliability



Locally Funded Projects

600 cities and local agencies provide water through local projects and imported supplies.

- Local systems –
 - San Francisco's Hetch Hetchy
 - East Bay Municipal Utility District's Pardee and Camanche Reservoirs
 - Los Angeles' Owens Valley and Los Angeles Aqueducts





Hetch Hetchy

Raker Act (1913):
federal lands in the
Sierra Nevada
Mountains, including
Hetch Hetchy Valley
in Yosemite, used to
build the water
system

- The Bay Area
Water Supply and
Conservation
Agency (BAWSCA)
- 1.7 million citizens
and businesses



WATER EDUCATION
FOUNDATION

More Local Systems

- Metropolitan Water District of Southern California largest local district

 - operates Colorado River Aqueduct.

- Other local projects serve farmers, such as Glenn-Colusa Canal in the Sacramento Valley.



Diamond Valley Lake (MWD photo)





**SAN DIEGO AQUEDUCT
2nd BARREL NORTH SECTION
THE LAST PIPE**

DESIGNED United States Bureau of Reclamation
FOR San Diego County Water Authority
FINANCED United States Navy
WATER FROM Metropolitan Water District of So Calif
BUILT BY Johnson Western Construction

Wild & Scenic Rivers



American River

- 1972 State Wild and Scenic Rivers Act - no dams or diversion facilities on the Smith River and parts of Klamath, Trinity, Van Duzen, Scott, Eel, Salmon, Feather and American
- In 1980, some rivers added to the Federal Wild and Scenic Rivers System
- Today parts of other rivers included



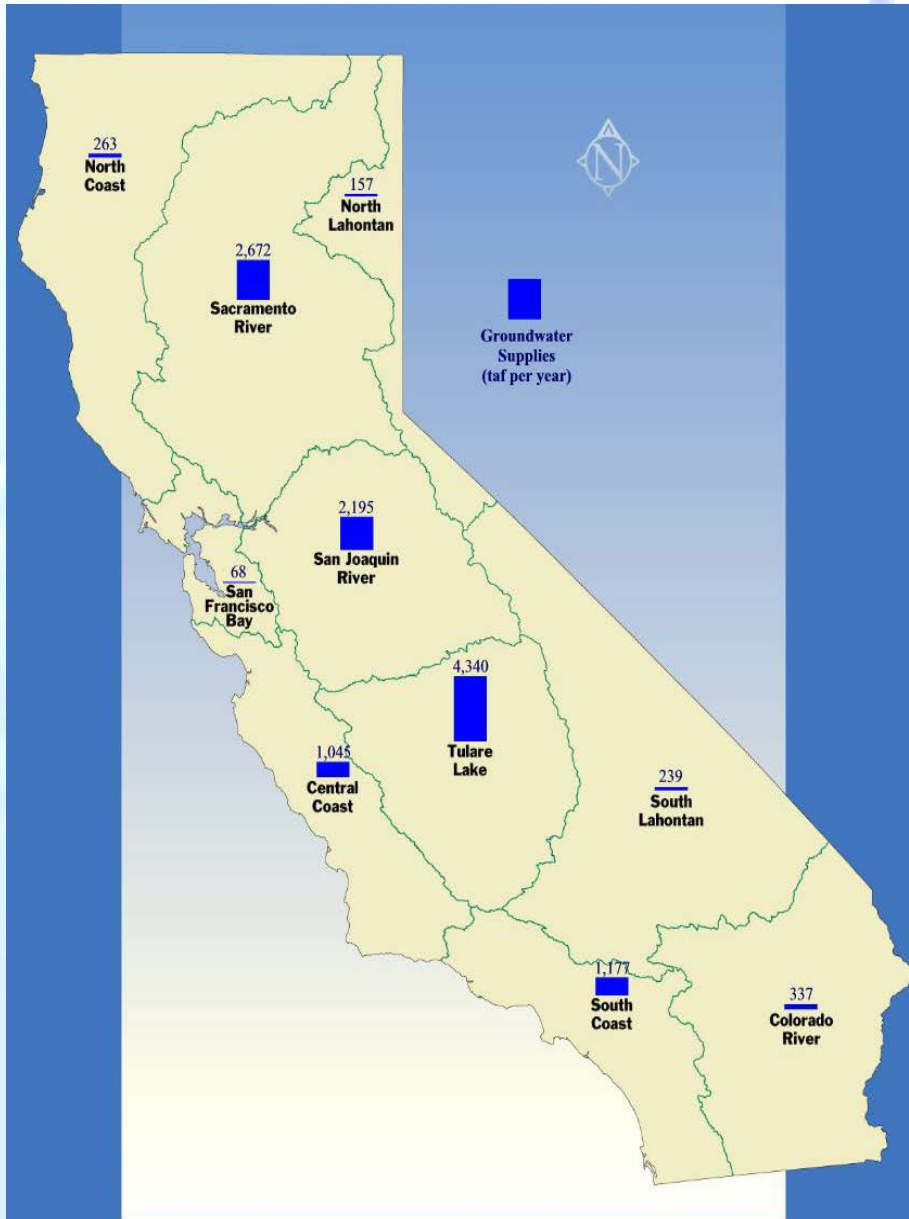
Groundwater

Groundwater exists in aquifers – water bearing rock layers

- About 30% (15 million acre-feet) of state's water comes from groundwater in normal years; 40%-45% in drought years, or more
- California uses more groundwater than any other state – about 40% of population gets drinking water from groundwater



Groundwater Supplies



Where is the groundwater?

DWR estimates more than 400 groundwater basins hold a total of about 850 million acre-feet of water.



Groundwater Management

- 💧 Historic regulation of groundwater – 2014 legislation
- 💧 In Southern California, many groundwater basins have been adjudicated, with courts establishing the pumping rights of many parties. A watermaster appointed to oversee – largely exempt from new legislation



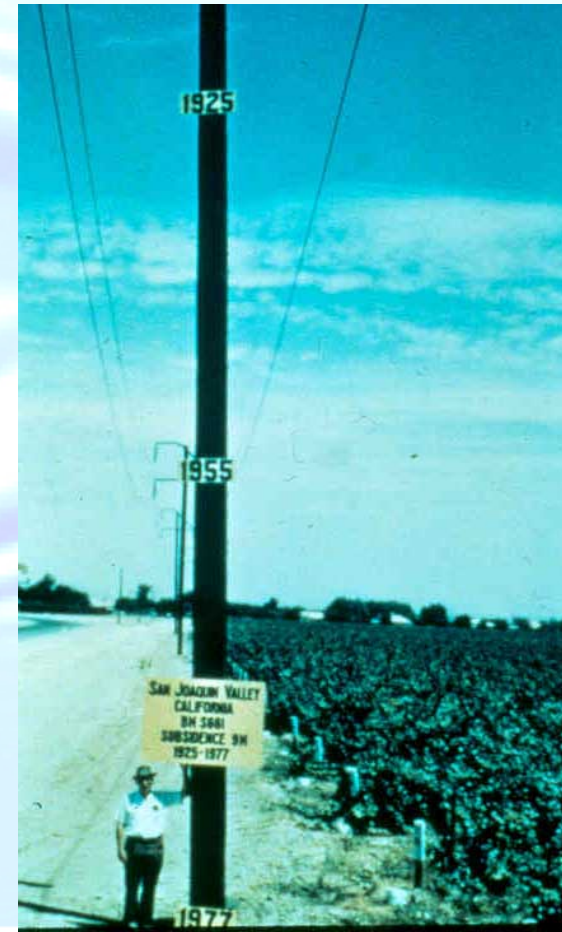
Groundwater Overdraft

Overdraft is taking more water out of the ground than is recharged (time dimension)

- Historical overdraft in Central Valley led to construction of Central Valley project

- NASA - Central Valley has lost enormous amounts of groundwater from 2003-2009 - 24.3 million acre feet since 2003 – enough to fill Lake Powell, 2nd largest reservoir in USA

USGS scientist shows overdraft in San Joaquin Valley, 1970s



Groundwater Pollution

Pollution is a serious threat. All the state's groundwater basins are contaminated to some degree.

- 💧 Trichloroethylene (TCE) - Used in adhesives, lubricants, paint products, pesticides, adhesives, rug-cleaners
- 💧 Perchlorate - Primary ingredient of solid rocket propellant
- 💧 Methyl tertiary butyl ether (MTBE)
 - added to gasoline to reduce air pollution in 1990s. Today leaky underground tanks



Flood Management

- 💧 Floodplain Management
 - In next 25 years population increase of about 14 million. Development will impact floodplains
- 💧 Levee Repairs
 - Nearly 250 levee repair sites identified and work progressing



- 💧 Climate Change
 - Warming ocean water and melting ice = sea level increase by 1.6 feet by 2050 along coastlines. By 2100 sea rise could be more than 3 feet. Recent warming running ahead of predictions and estimates may be low



Flood Management: Levees

2005 – Hurricane Katrina

2006 – Ca. Preparation

Gov. Schwarzenegger declares a State of Emergency for California's levee system

- Flood Bonds passed

2012 – Central Valley Plan

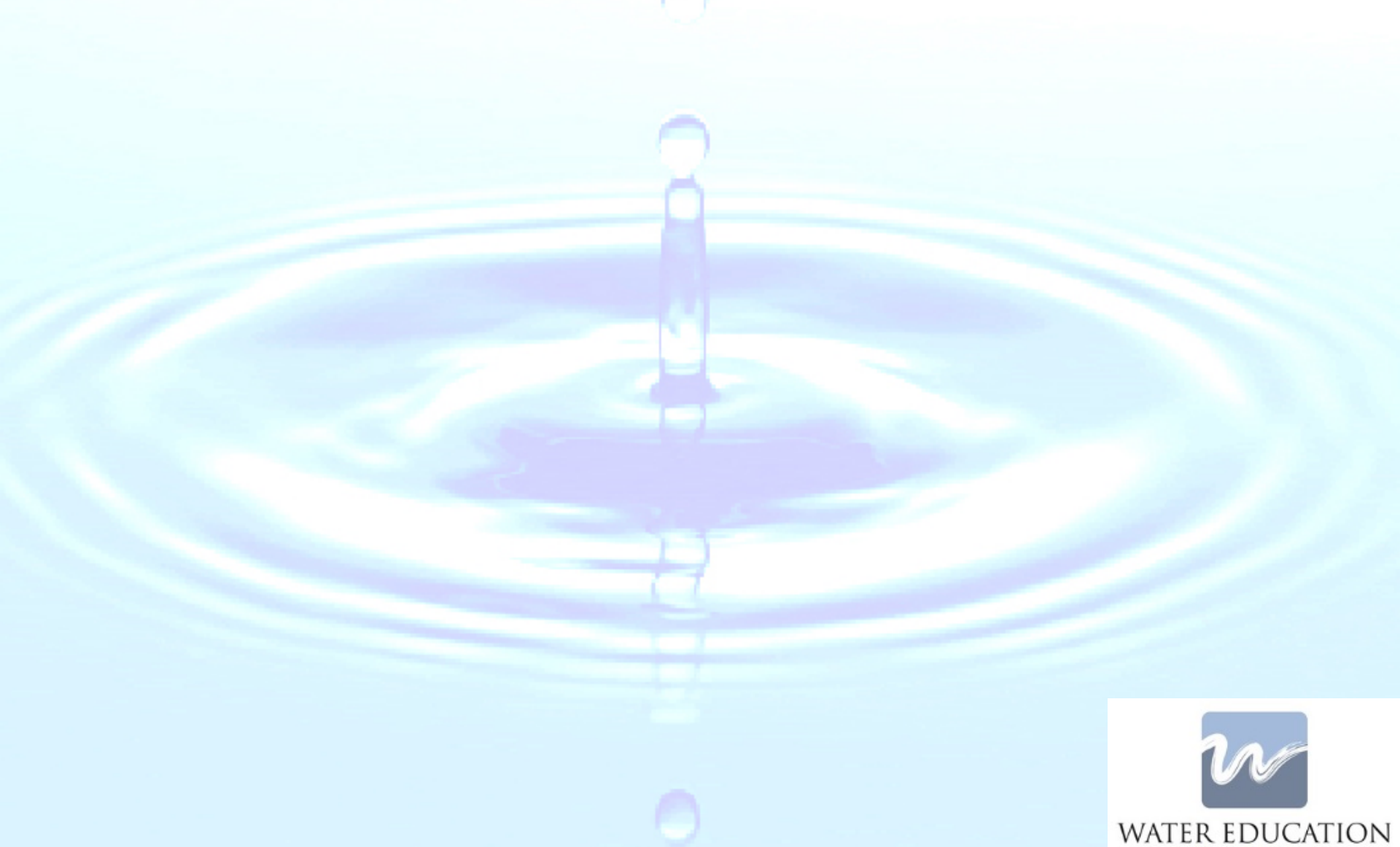
Plan will detail how to improve flood management in Central Valley

2013 – Statewide Plan

Plan will detail how to improve flood management statewide



Questions?



WATER EDUCATION
FOUNDATION