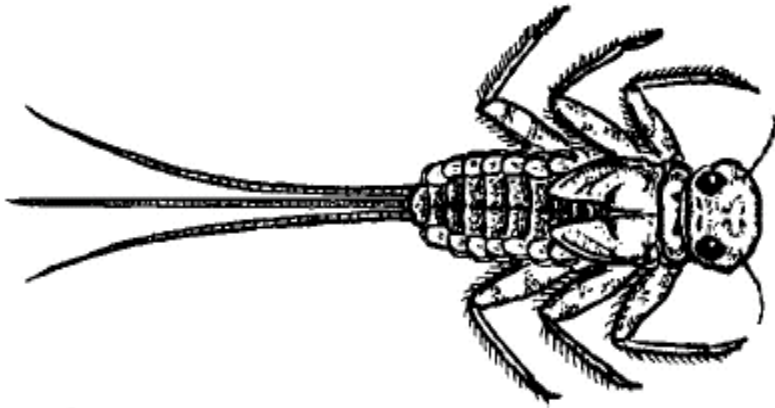


Mayfly Nymph

*** You must flap your arms & spin in circles when crossing the field! ***

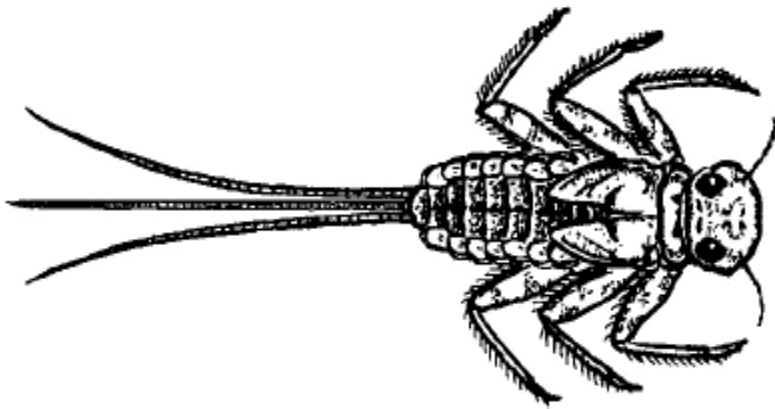
Mayflies have gills along the side of their abdomen in order to 'breathe.' Medium to high dissolved oxygen levels are needed for the mayfly to live. The mayfly nymph eats algae and small plant particles. The mayfly nymph has 1 set of wing pads on its thorax and can have 2 or 3 tails.



Mayfly Nymph

*** You must flap your arms & spin in circles when crossing the field! ***

Mayflies have gills along the side of their abdomen in order to 'breathe.' Medium to high dissolved oxygen levels are needed for the mayfly to live. The mayfly nymph eats algae and small plant particles. The mayfly nymph has 1 set of wing pads on its thorax and can have 2 or 3 tails.



Mayfly Nymph

*** You must flap your arms & spin in circles when crossing the field! ***

Mayflies have gills along the side of their abdomen in order to 'breathe.' Medium to high dissolved oxygen levels are needed for the mayfly to live. The mayfly nymph eats algae and small plant particles. The mayfly nymph has 1 set of wing pads on its thorax and can have 2 or 3 tails.