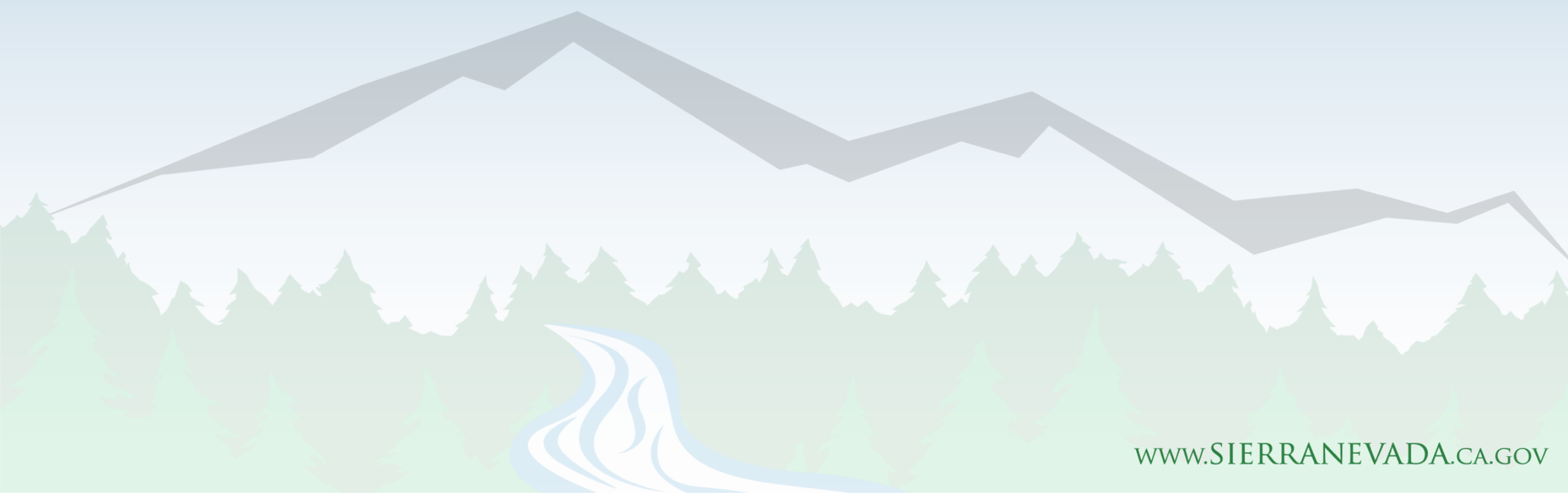


Jim Branham

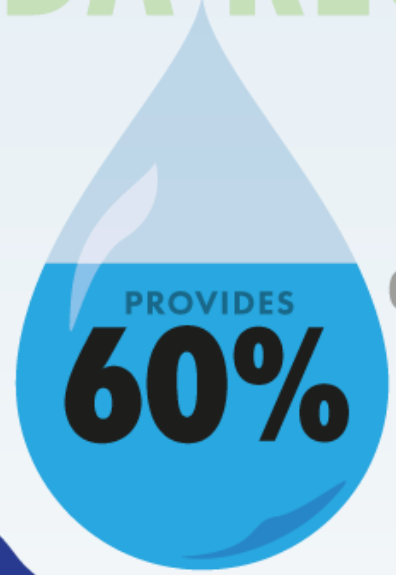
Executive Officer | Sierra Nevada Conservancy



The SIERRA NEVADA REGION



25 % OF CA'S LAND AREA
MILLION ACRES



PROVIDES
60%

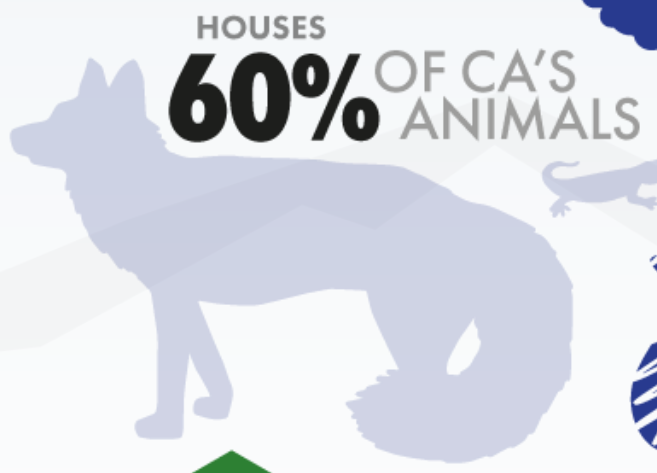
OF CA'S DEVELOPED WATER SUPPLY



STORES

**H
A
L
F**

OF CA'S FOREST CARBON



HOUSES
60% OF CA'S ANIMALS



1 in 3

ARE THREATENED OR ENDANGERED



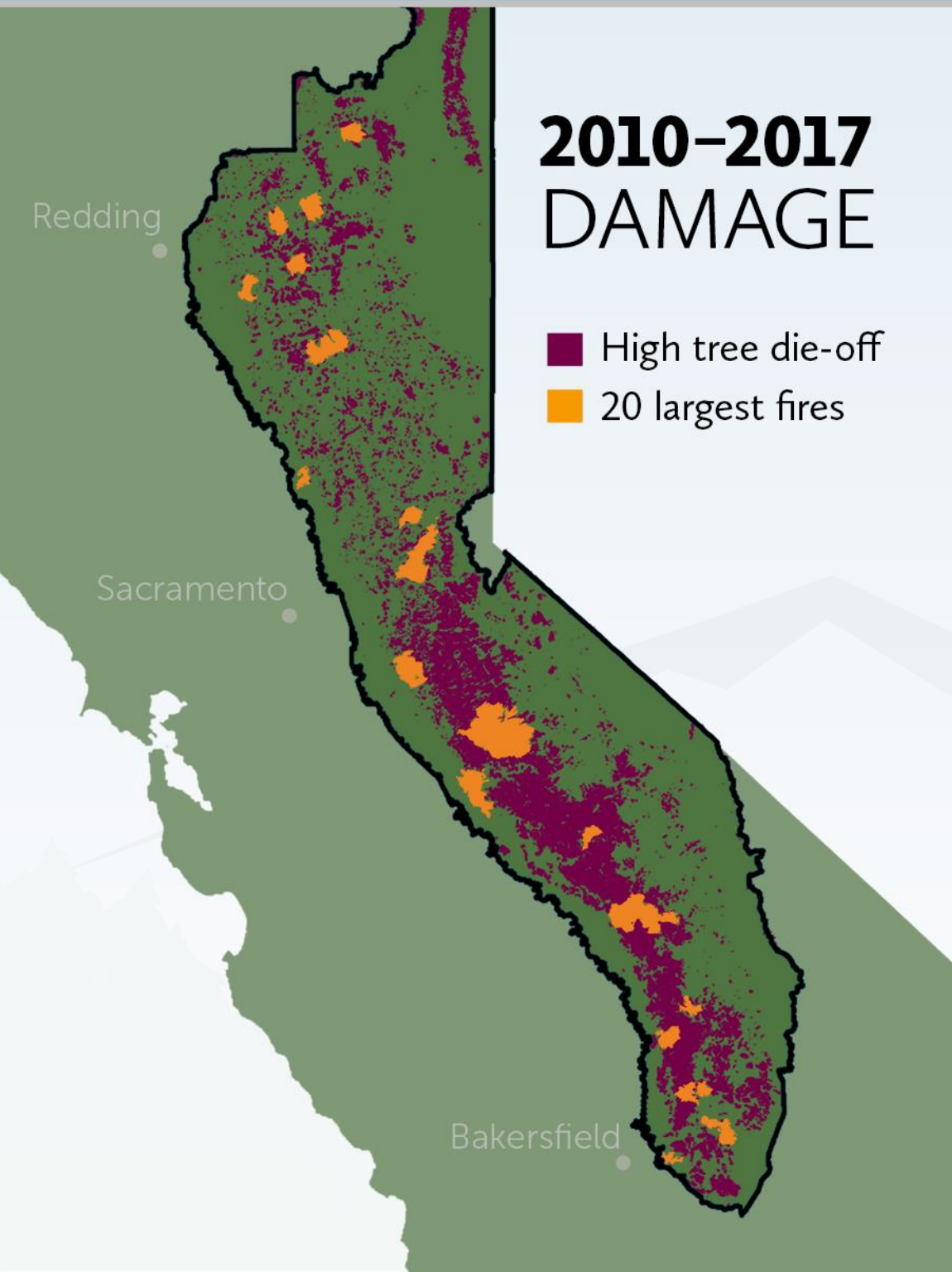
600,000
RESIDENTS

SUPPORTS
212
COMMUNITIES



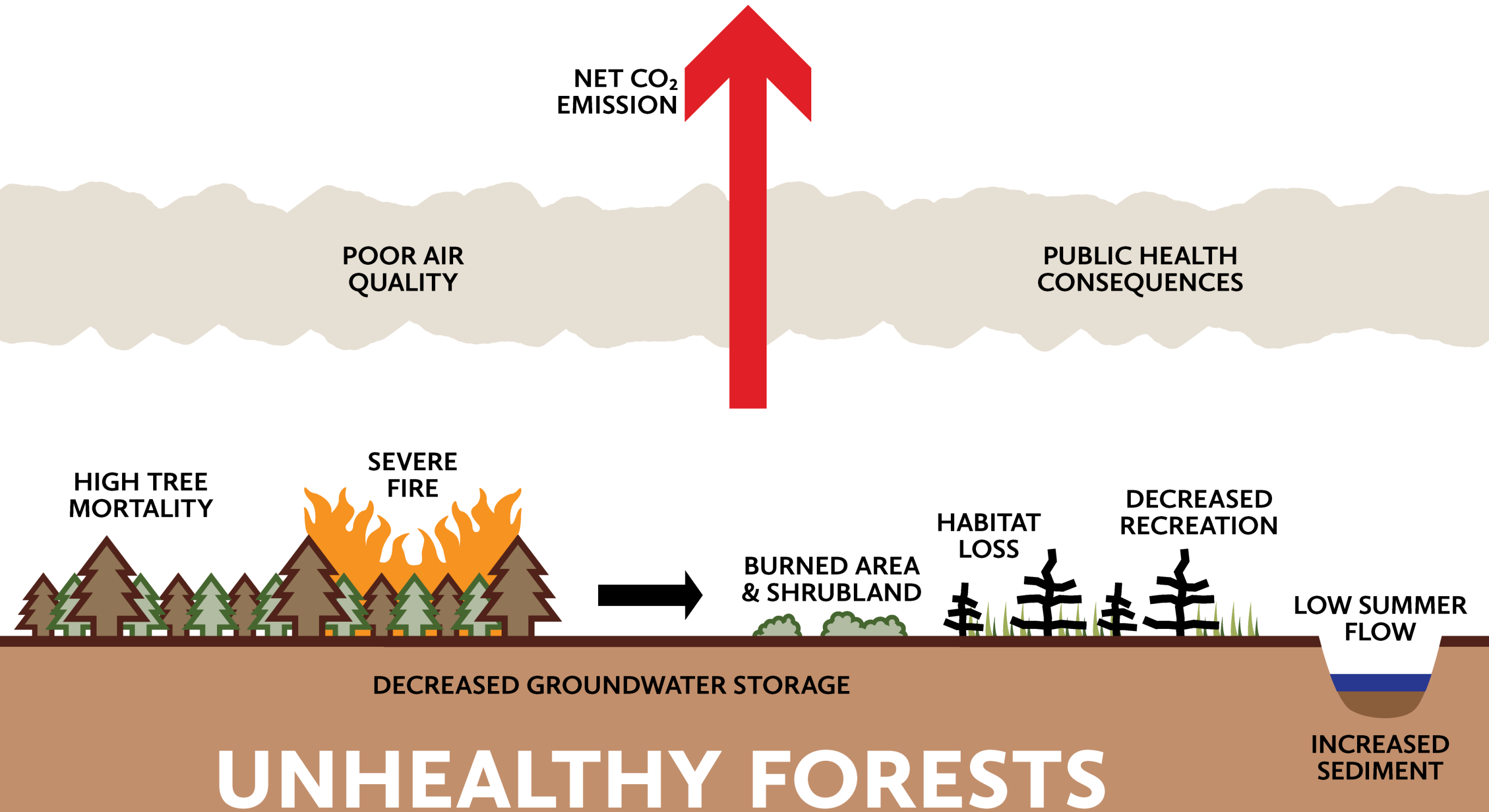
SUSTAINS
50 MILLION
RECREATION
VISIT DAYS PER YEAR

THE DIAGNOSIS: Sierra Nevada in Peril



- ❖ Many forests are overgrown & unhealthy
- ❖ Unprecedented levels of severe wildfire & tree mortality
- ❖ Meadows & streams are in need of restoration
- ❖ Many communities continue to face economic challenges

The Result



THE GOOD NEWS: **We Know What to Do**

The science is clear in terms of the benefits of healthy, resilient forests. This can be achieved by:

- ❖ Ecologically sound thinning & timber harvest
- ❖ Prescribed & managed fire
- ❖ Appropriate reforestation



Photo by: Susan Kocher