

# Welcome to Tehama County!



# People Quick Facts

- 61,550 people (July 2008)
- 9.8 % growth from 2000 to 2008
- \$15,793 per capita income (CA median \$22,711)
- Aug 2009 Unemployment rate 14.2 % (CA 12.1%)
- Persons below poverty level 19.3% (CA 14.2%)

# Major Employers

- Agriculture – production and processing
- Casino
- Education and Health Care
- Government
- Manufacturing
- Retail
- Recreation
- Transportation

# Climate – Valley Floor

- Annual precipitation ~ 20 inches
- Temperature
  - Summer Daytime Highs > 110 °F
  - Winter Daytime Lows < 32 °F

# Land and Land Use

- 2000 square miles (mountains, foothills, and valley floor)
- 3 incorporated cities
  - Red Bluff
  - Corning
  - Tehama
    - Bend, Gerber, Lake California, Los Molinos, Manton, Mineral, Proberta, Rancho Tehama, Vina, and other towns and sub-divisions are not incorporated

# Major Irrigated Crops (acres)

**1969**

- Irrigated pasture ~ 39,400
- Wheat and barley grain – 14,390
- Alfalfa and oat hay – 10,000
- Prunes – 7, 959
- English walnut – 6,717
- Corn, sorghum, bean – 5,000
- Olives – 4,917
- Almonds – 4,241
- Clover, other seed crops – 3,000

**Total Crop Value = \$28.2 million**

**2008**

- Irrigated pasture ~ 22,000
- English walnut – 16,748
- Almond – 8,786
- Prunes – 8,527
- Alfalfa and oat hay – 8,349
- Olive (canning) - 5,262
- Olive (oil) ~ 2,500
- Wheat, corn, bean – 3,124

**Total Crop Value = \$159.1 million**

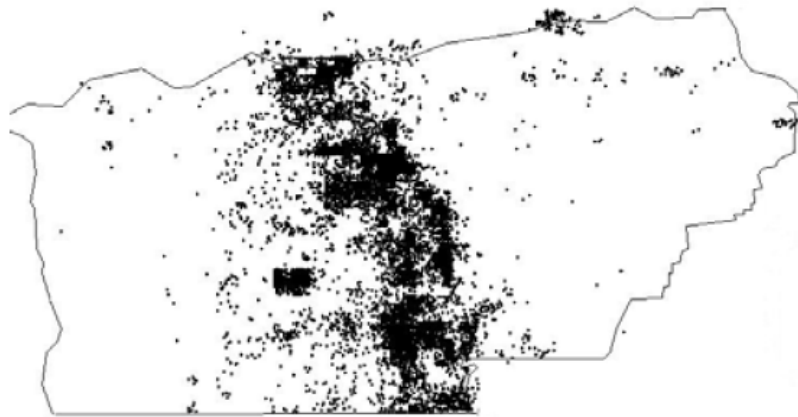
# Average Yearly Water Demand

- 373,000 ac-feet
- ~ 1 ½ times the capacity of Whiskey Town Lake
  - 92 % agriculture (includes conveyance losses)
  - 7 % municipal and industry
  - 1 % wildlife refuges and wetlands

# Water Supply Sources

- 234,000 ac-feet from groundwater (63 %)
- 100,000 ac-feet from local stream diversions (27 %)
- 40,000 ac-feet from Federal Project (~ 9 %)
- Reclaimed water (~ 1 %)

# Groundwater Well Infrastructure Tehama County



- 11,475 wells ( $\frac{1}{3}$  of NSV)
  - 8,728 domestic
  - 1,340 irrigation
  - 115 municipal & industry
  - 1,292 other purposes

# Groundwater Well Infrastructure

- ~ 4,400 (50%) of domestic wells are screened at less than 125 feet deep
- ~ 650 irrigation wells are screened at less than 225 feet deep
- ~ 55 municipal, industry, and public wells screened at less than 200 feet deep

# Water Resource Management in Tehama County

- Water Export Ordinance No. 1617 (adopted 1994)
- Tehama County Flood Control and Water Conservation District
  - 5 member elected Board of Directors
  - Manager and county support staff
  - Signatory to the Four-Counties MOU, Multi-Party MOU and involved in SV Integrated Regional Water Planning activities
  - Recipient of AB 303 funding
    - Water inventory analysis
    - Dedicated groundwater monitoring wells
    - GPS Land subsidence monitoring in place
- AB-3030 Groundwater Management Plan (adopted 1998)
  - 9 member Technical Advisor Committee
  - SB 1938 compliant