

# Current Conditions in the Colorado River Basin

Kenneth Nowak

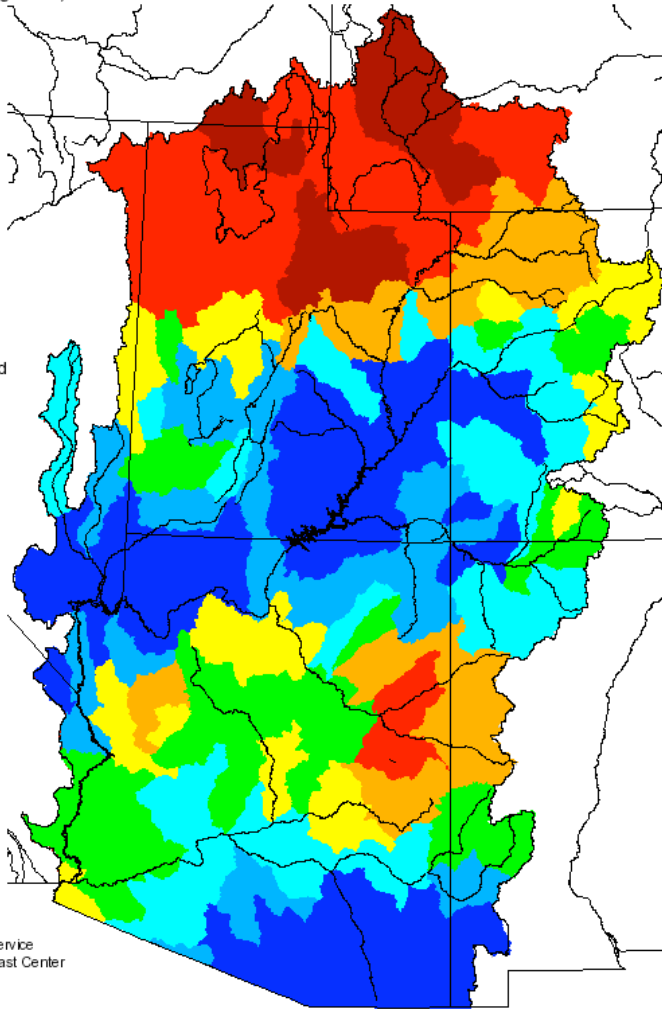
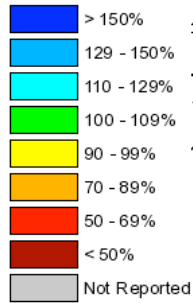


**CADSWES**

# Monthly Precipitation for February 2010

(Averaged by Hydrologic Unit)

## % Average

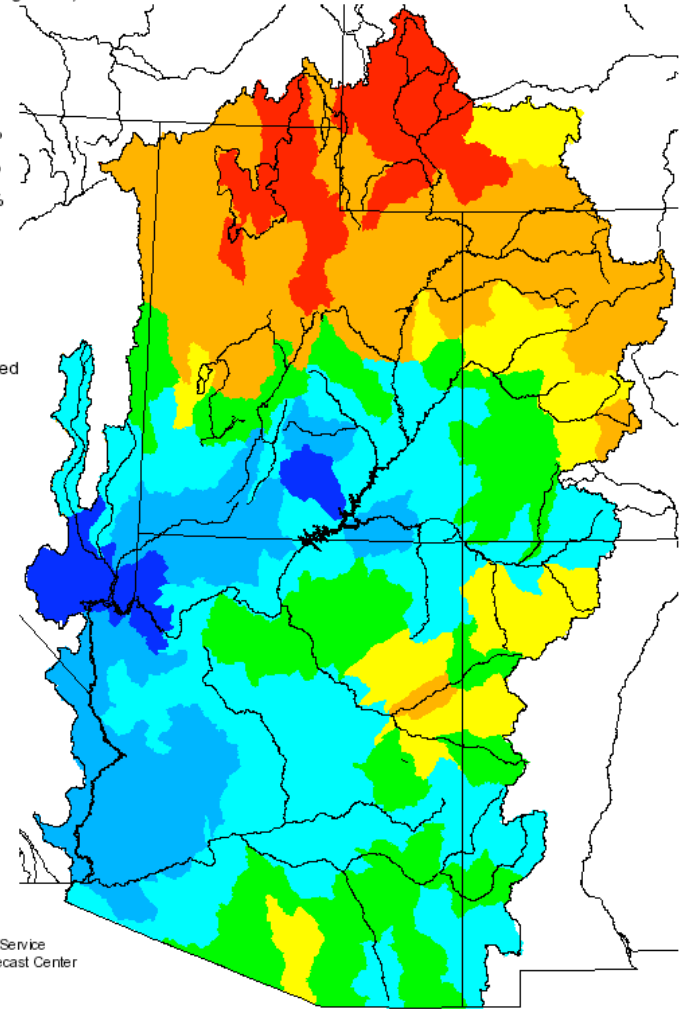
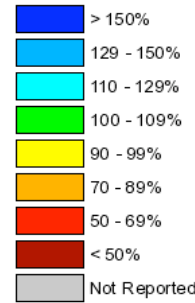


Prepared by  
NOAA, National Weather Service  
Colorado Basin River Forecast Center  
Salt Lake City, Utah  
[www.cbrfc.noaa.gov](http://www.cbrfc.noaa.gov)

# Seasonal Precipitation, October 2009 - February 2010

(Averaged by Hydrologic Unit)

## % Average



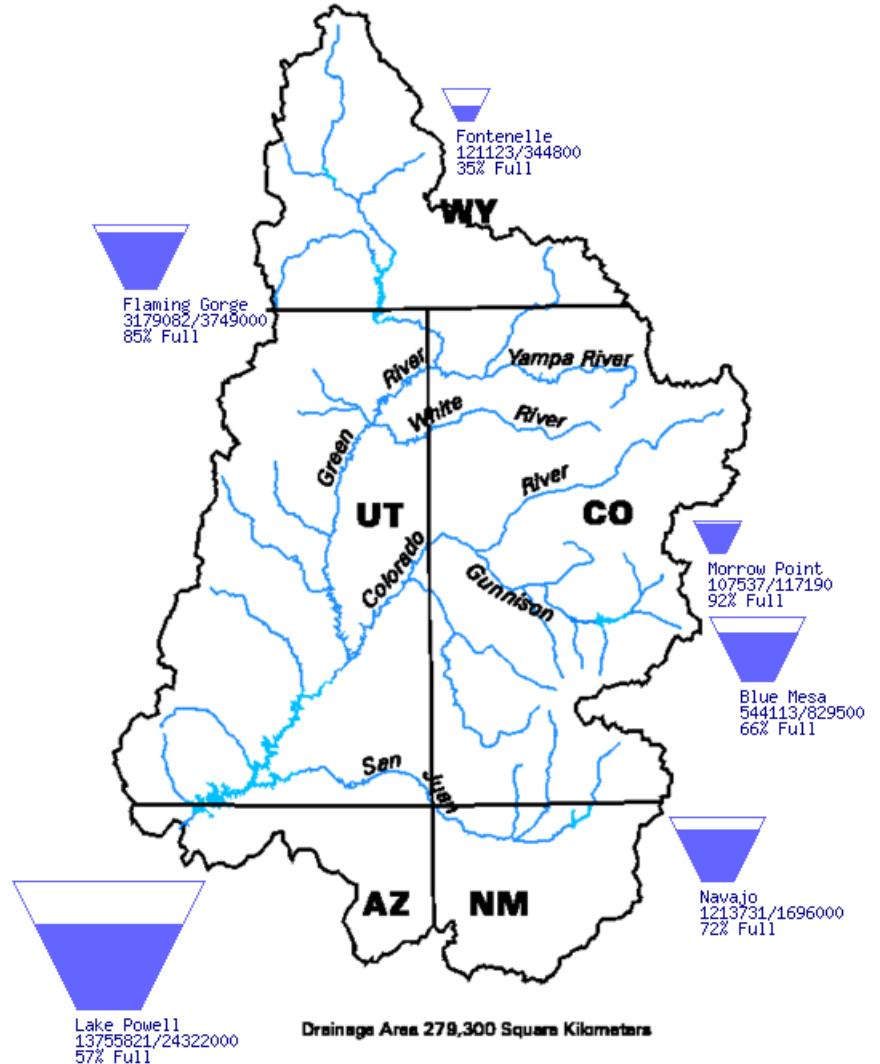
Prepared by  
NOAA, National Weather Service  
Colorado Basin River Forecast Center  
Salt Lake City, Utah  
[www.cbrfc.noaa.gov](http://www.cbrfc.noaa.gov)

# Reservoir Conditions

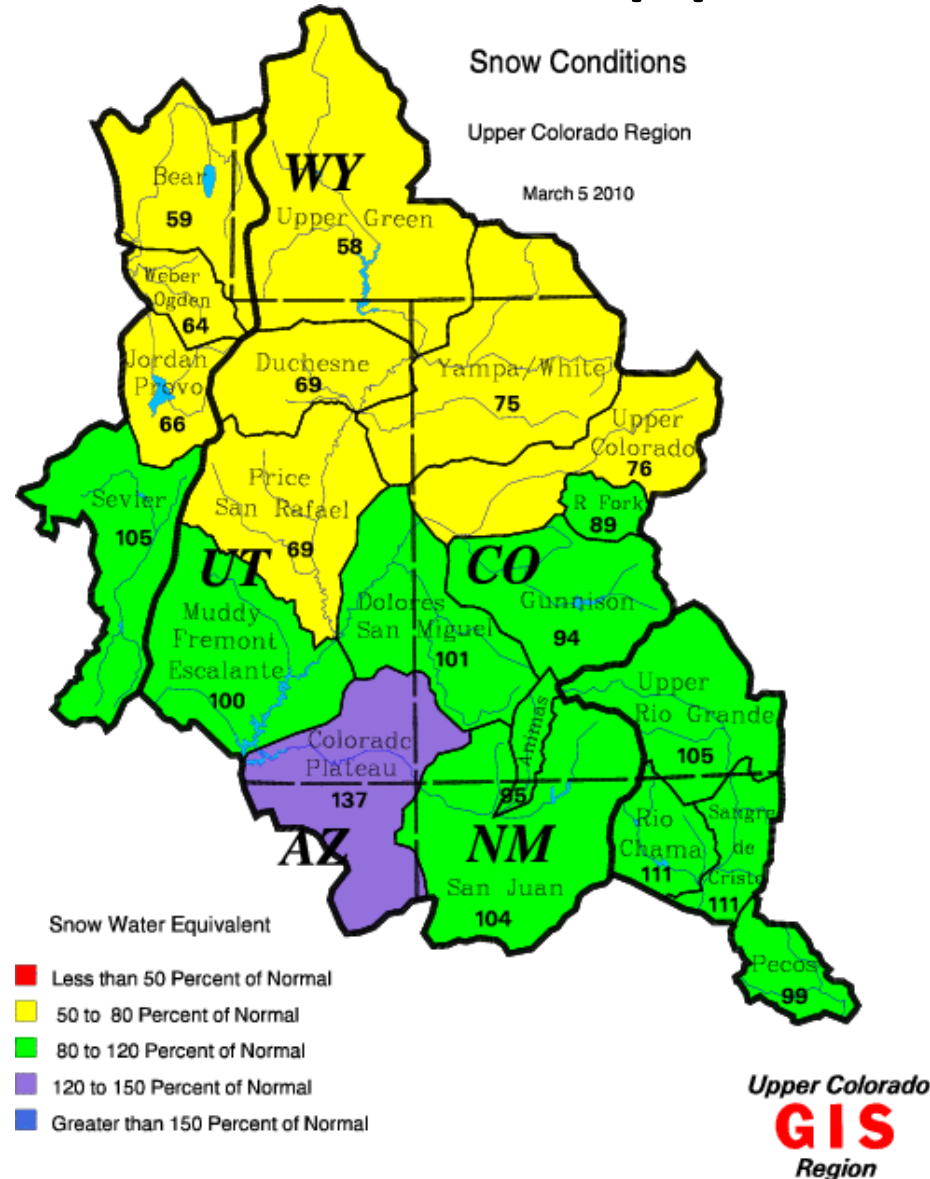
Data Current as of:  
03/04/2010

## Upper Colorado River Drainage Basin

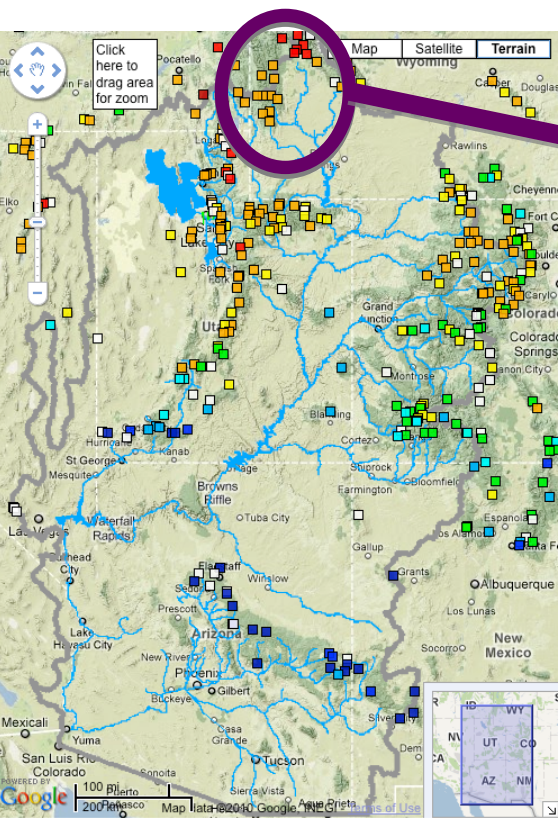
- Flaming Gorge 85%
- Fontenelle 35%
- Morrow Point 92%
- Blue Mesa 66%
- Navajo 72%
- Powell 57%
- Mead 46%
- Mohave 93%
- Havasu 88%



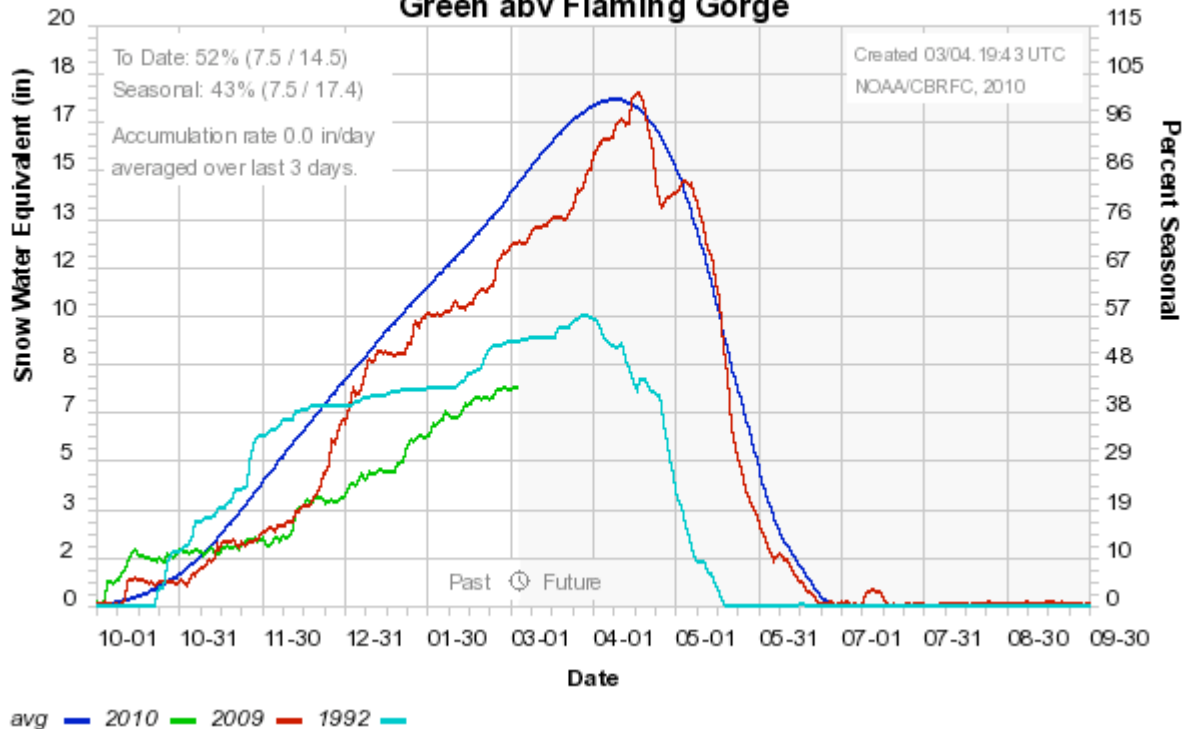
# Snow Conditions Upper Colorado



# Snow: Upper Green Basin (above Flaming Gorge)

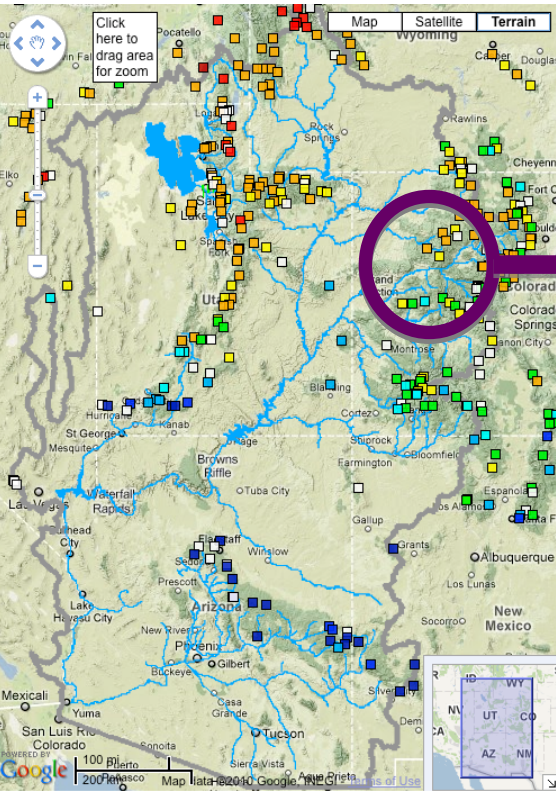


Colorado Basin River Forecast Center  
Green abv Flaming Gorge

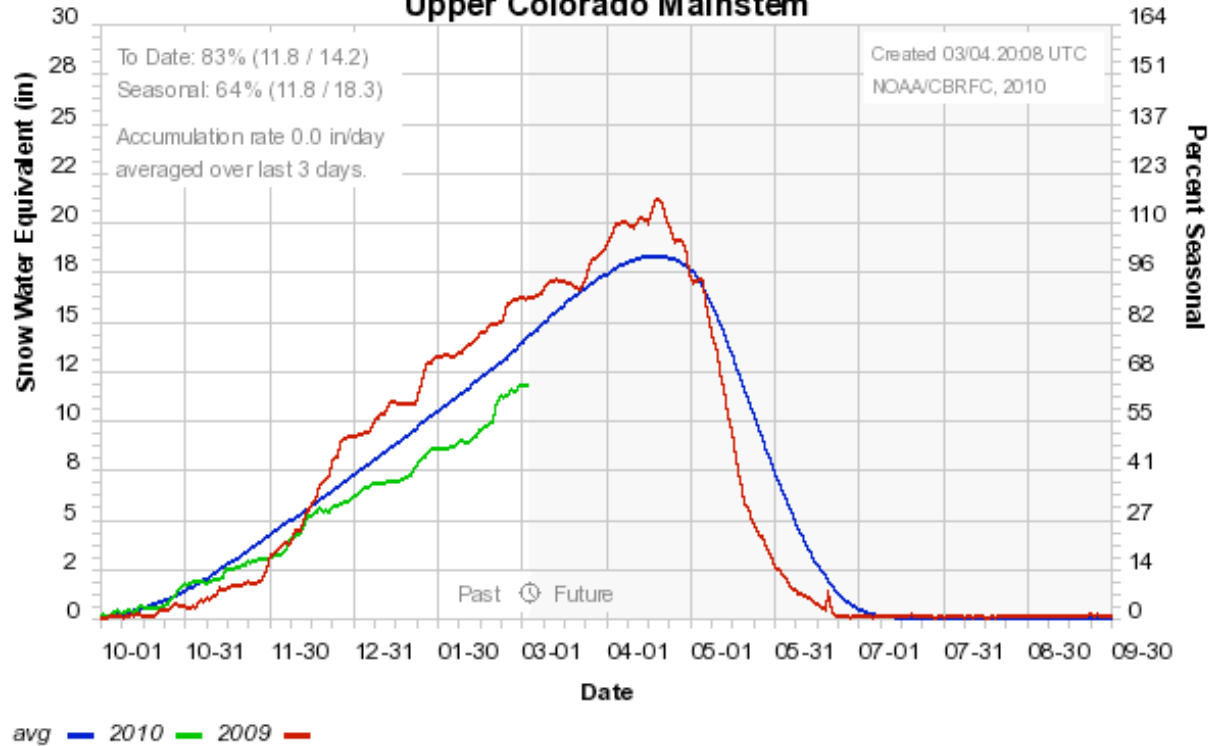


Web Reference: <http://www.cbrfc.noaa.gov/station/sweplot/sweplot.cgi???open>

# Snow: Colorado Mainstem (above Cameo)

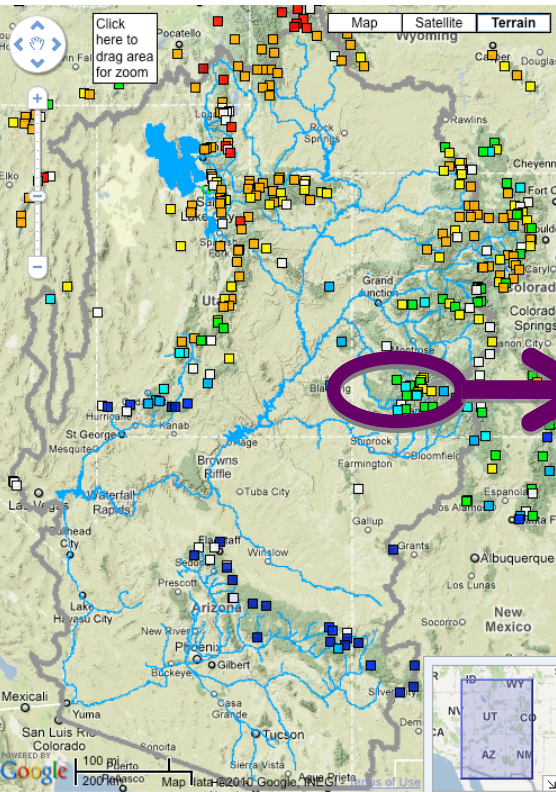


Colorado Basin River Forecast Center  
Upper Colorado Mainstem



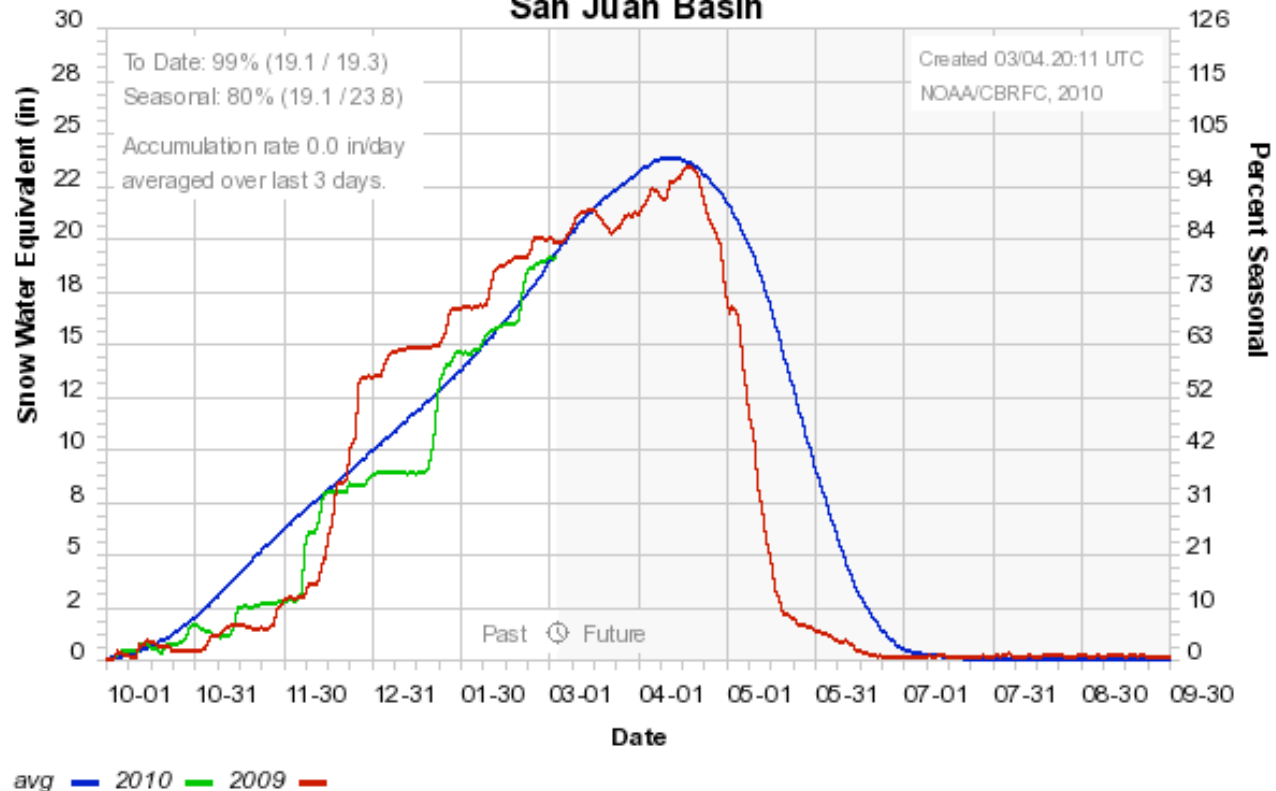
Web Reference: <http://www.cbrfc.noaa.gov/station/sweplot/sweplot.cgi???open>

# Snow: San Juan Basin



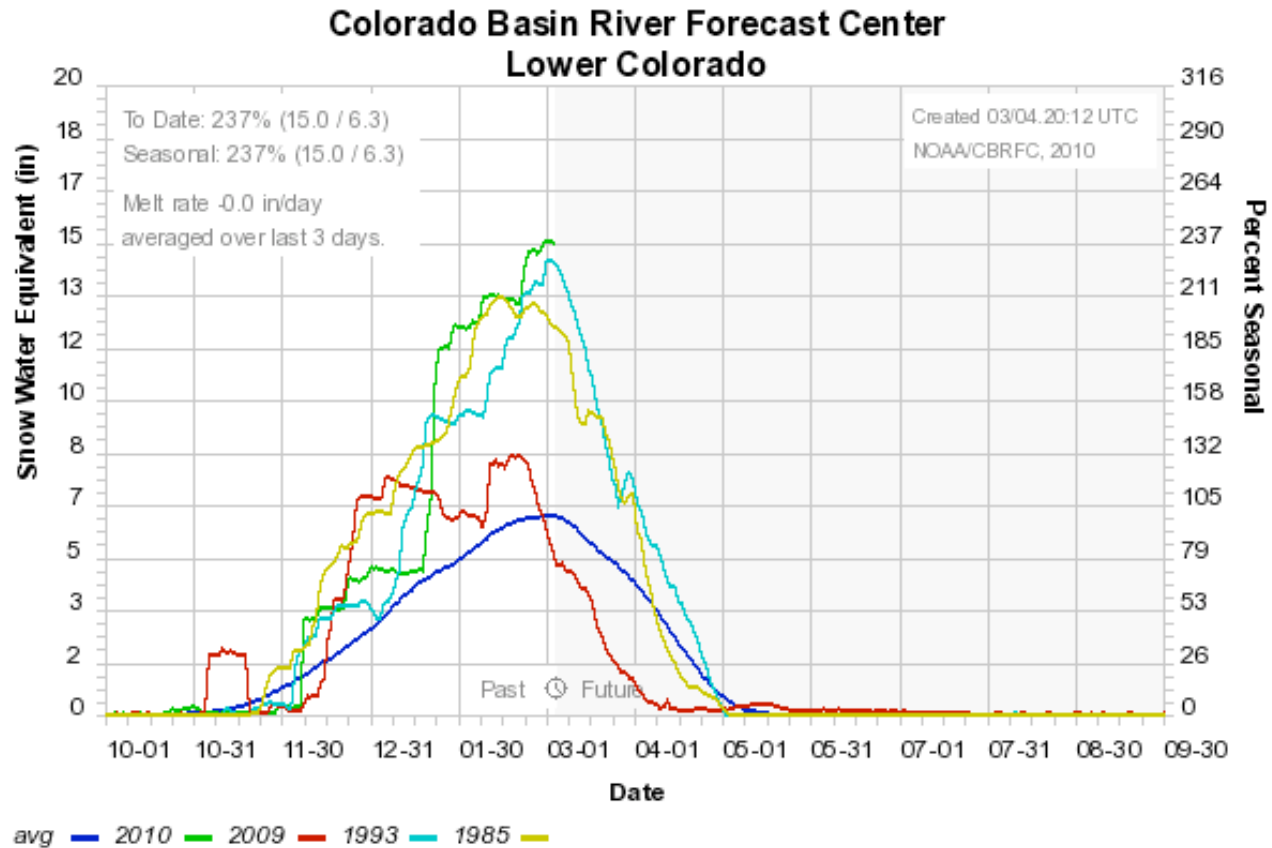
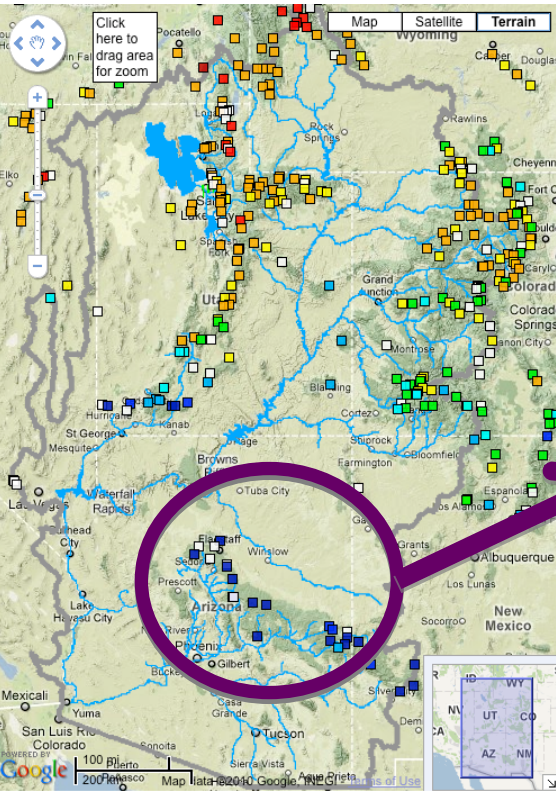
at: 37.6 lng: -110.5, 6. Data from Thu, 04 Mar 2010 12:15:00 -0700  
Goto the [Old Map](#) or [Give Feedback](#) on New Map.

Colorado Basin River Forecast Center  
San Juan Basin



Web Reference: <http://www.cbrfc.noaa.gov/station/sweplot/sweplot.cgi???open>

# Snow: Lower Colorado

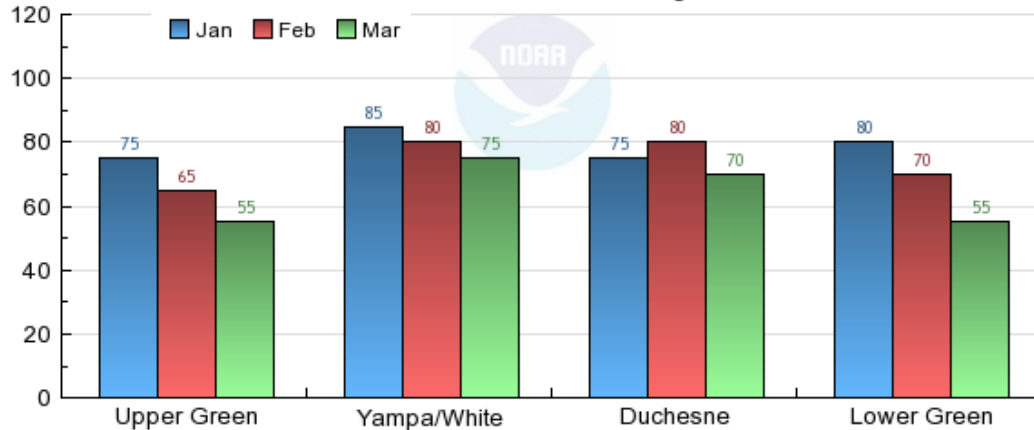


Web Reference: <http://www.cbrfc.noaa.gov/station/sweplot/sweplot.cgi???open>

# Runoff Projections

## Green April - July Volume Forecasts 2010

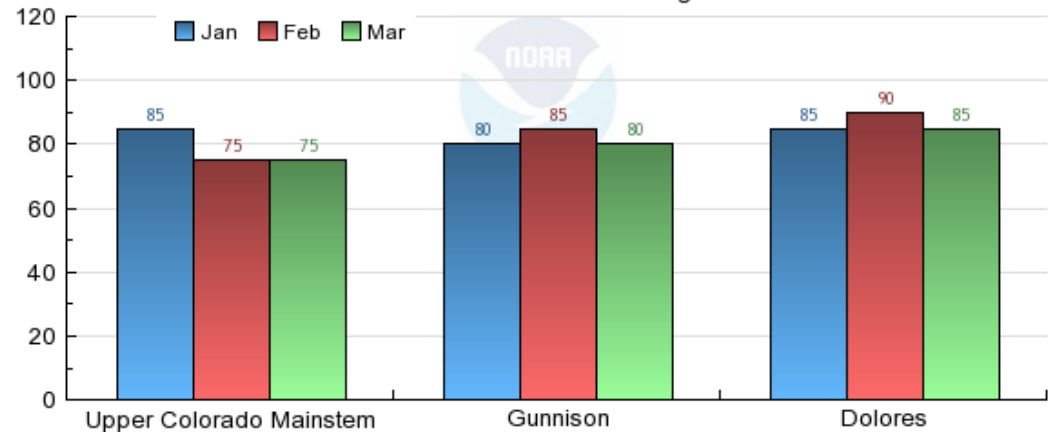
Percent of 1971-2000 Average\*



NOAA/NWS/CBRFC 03/03/10 16:36:32 MST

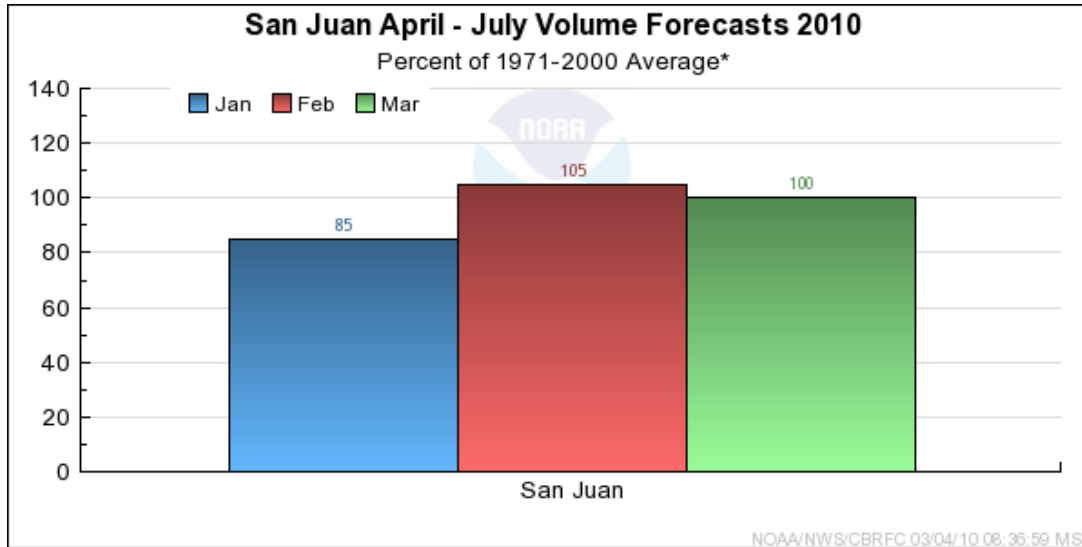
## Upper Colorado April - July Volume Forecasts 2010

Percent of 1971-2000 Average\*



NOAA/NWS/CBRFC 03/04/10 11:54:09 MST

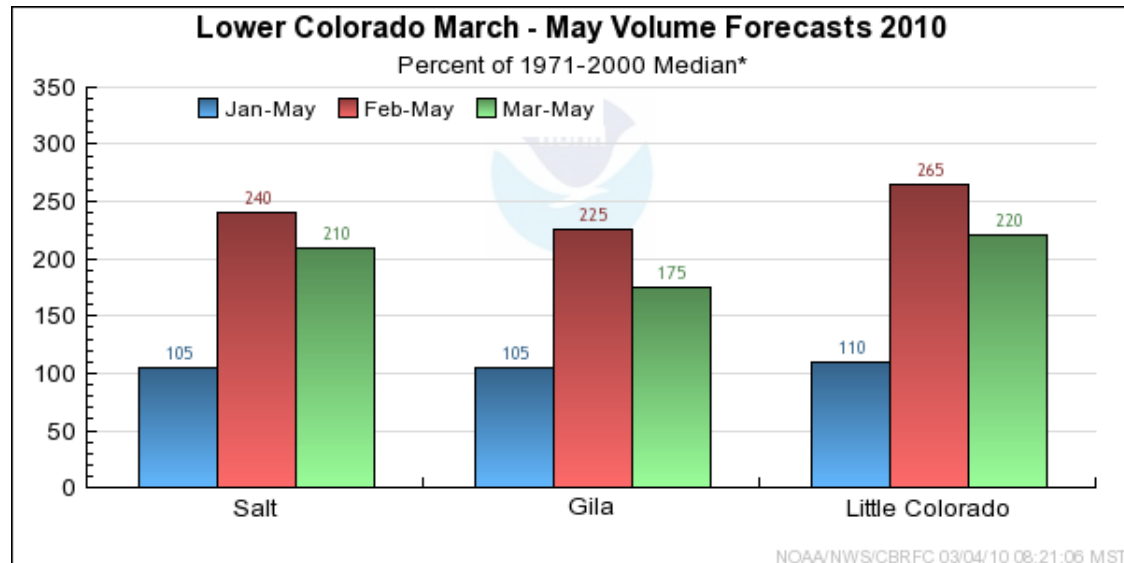
# Runoff Projections



Projected Powell inflow is 72 % of average for WY 2010

More information at NOAA's Colorado Basin River Forecast Center (CBRFC) website (water supply forecast)

<http://www.cbrfc.noaa.gov/>



Questions?