

# Sustainable Groundwater Management Act (SGMA) Update



August 16, 2017

Department of Water Resources



# Presentation Overview

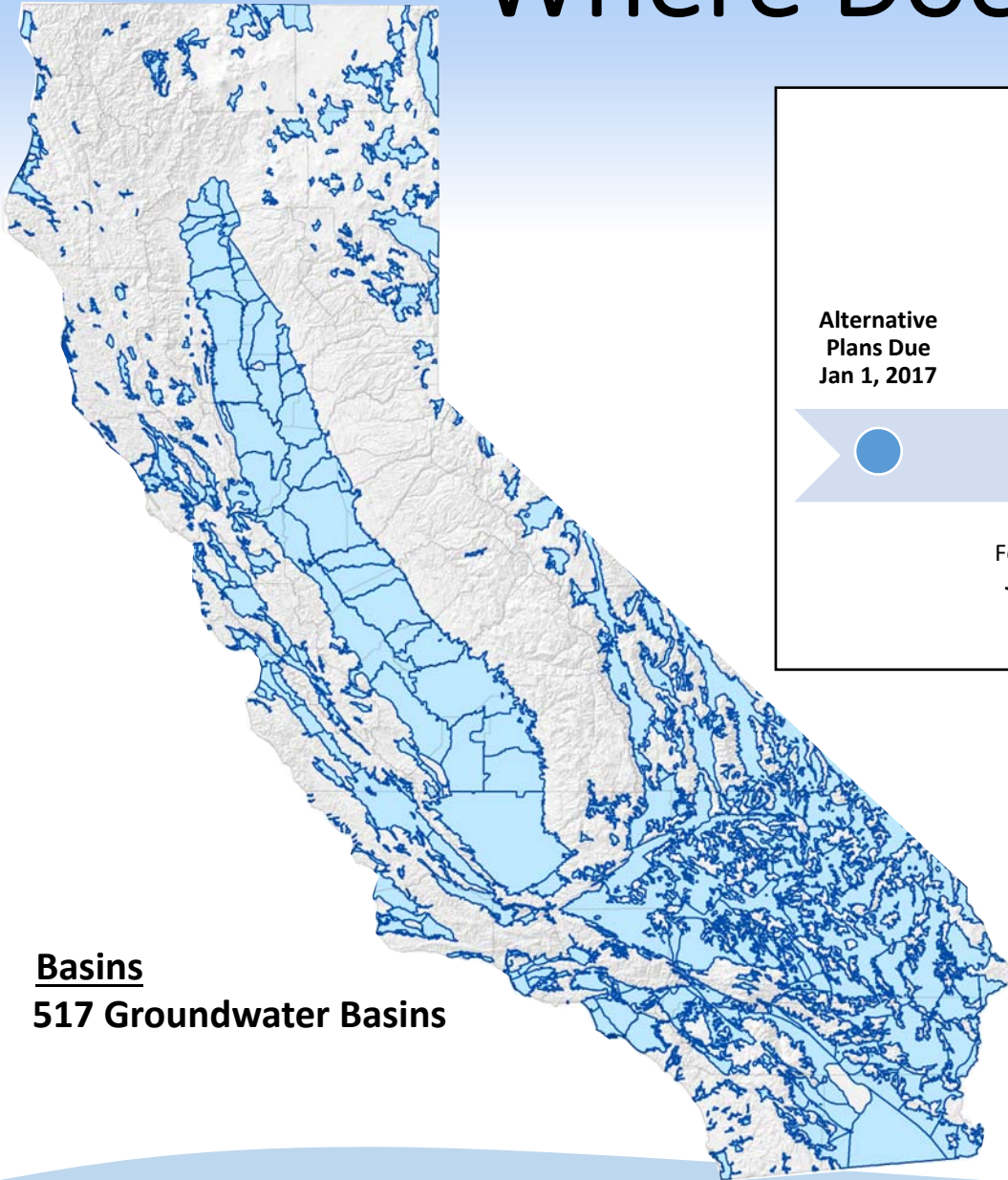
- SGMA Background
- GSA Formation
- Alternatives
- Basin Boundary Modifications
- Planning and Technical Assistance
- Next Steps



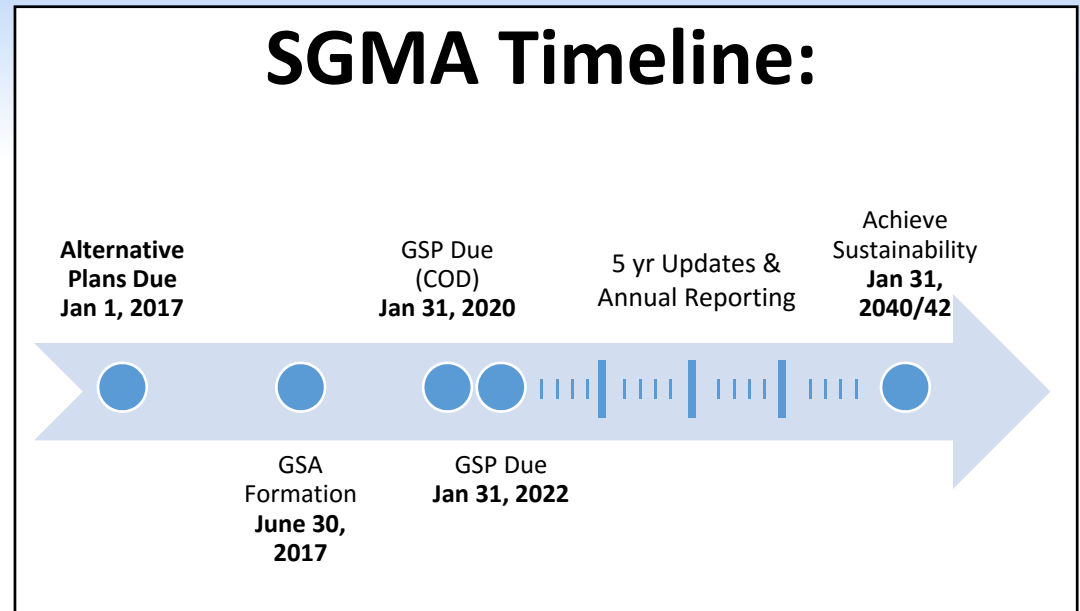
# **SGMA Background**



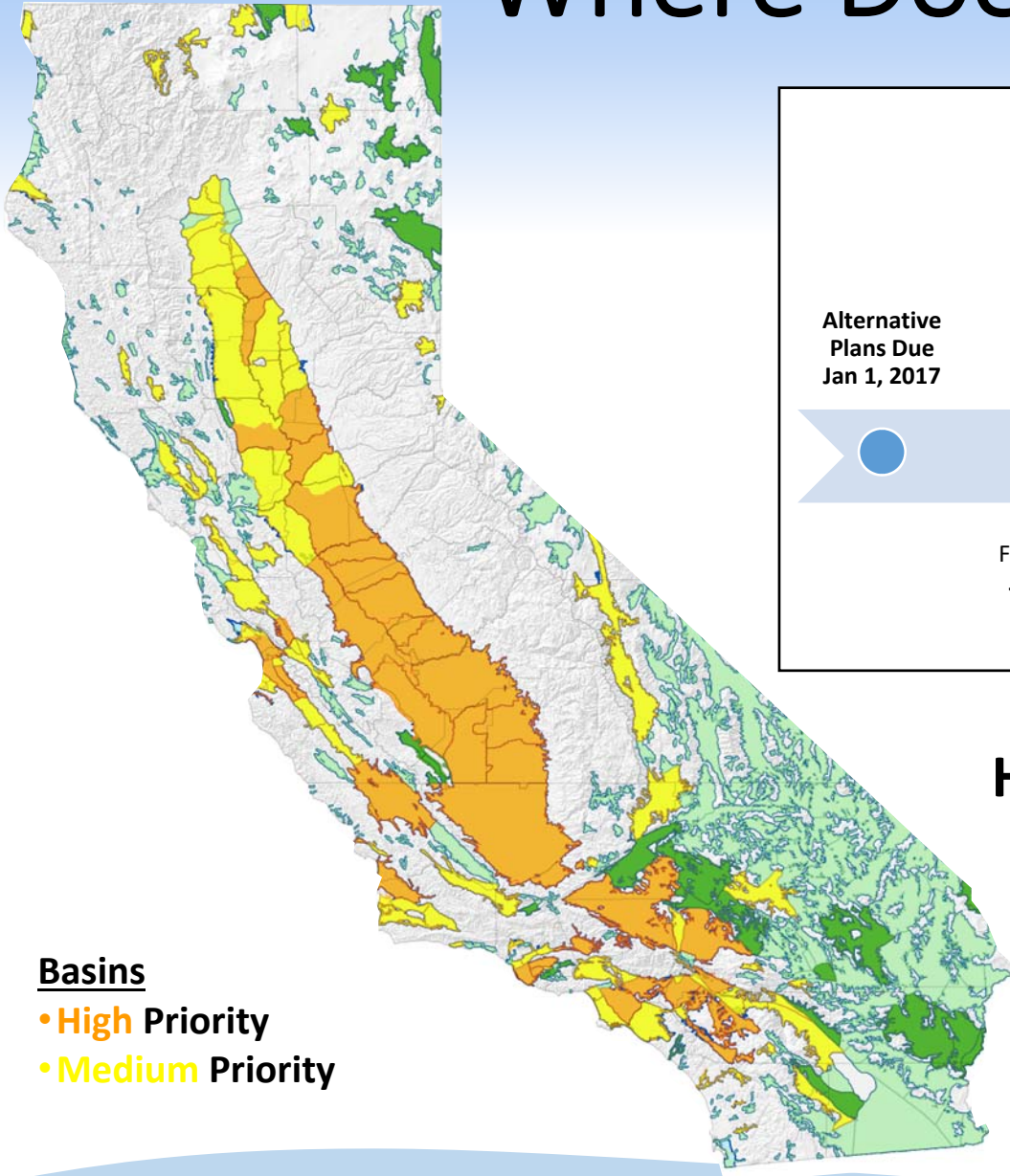
# Where Does SGMA Apply?



**Basins**  
**517 Groundwater Basins**



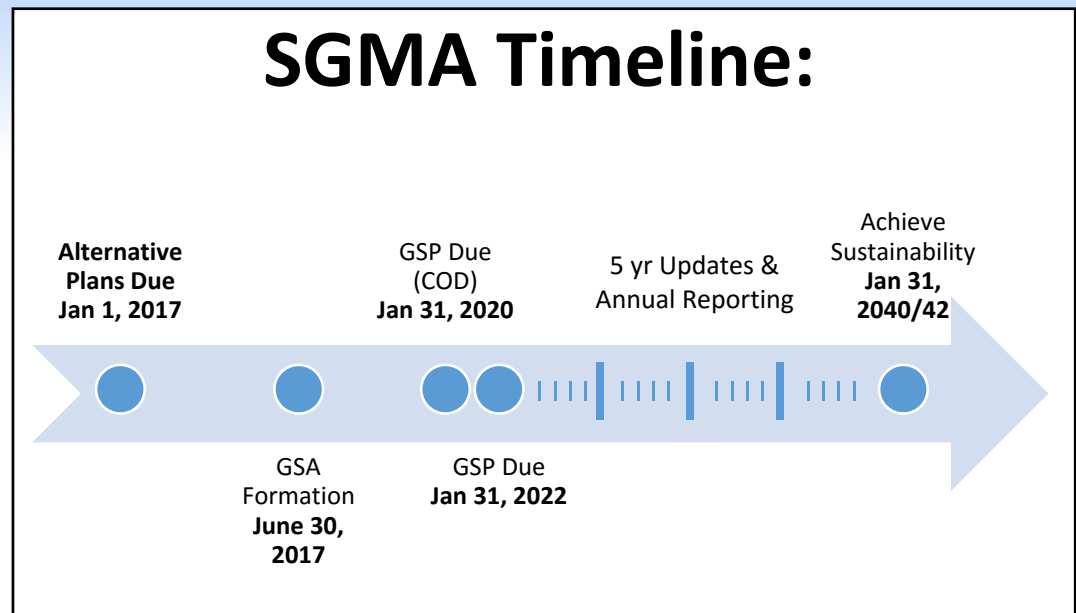
# Where Does SGMA Apply?



## Basins

- High Priority
- Medium Priority

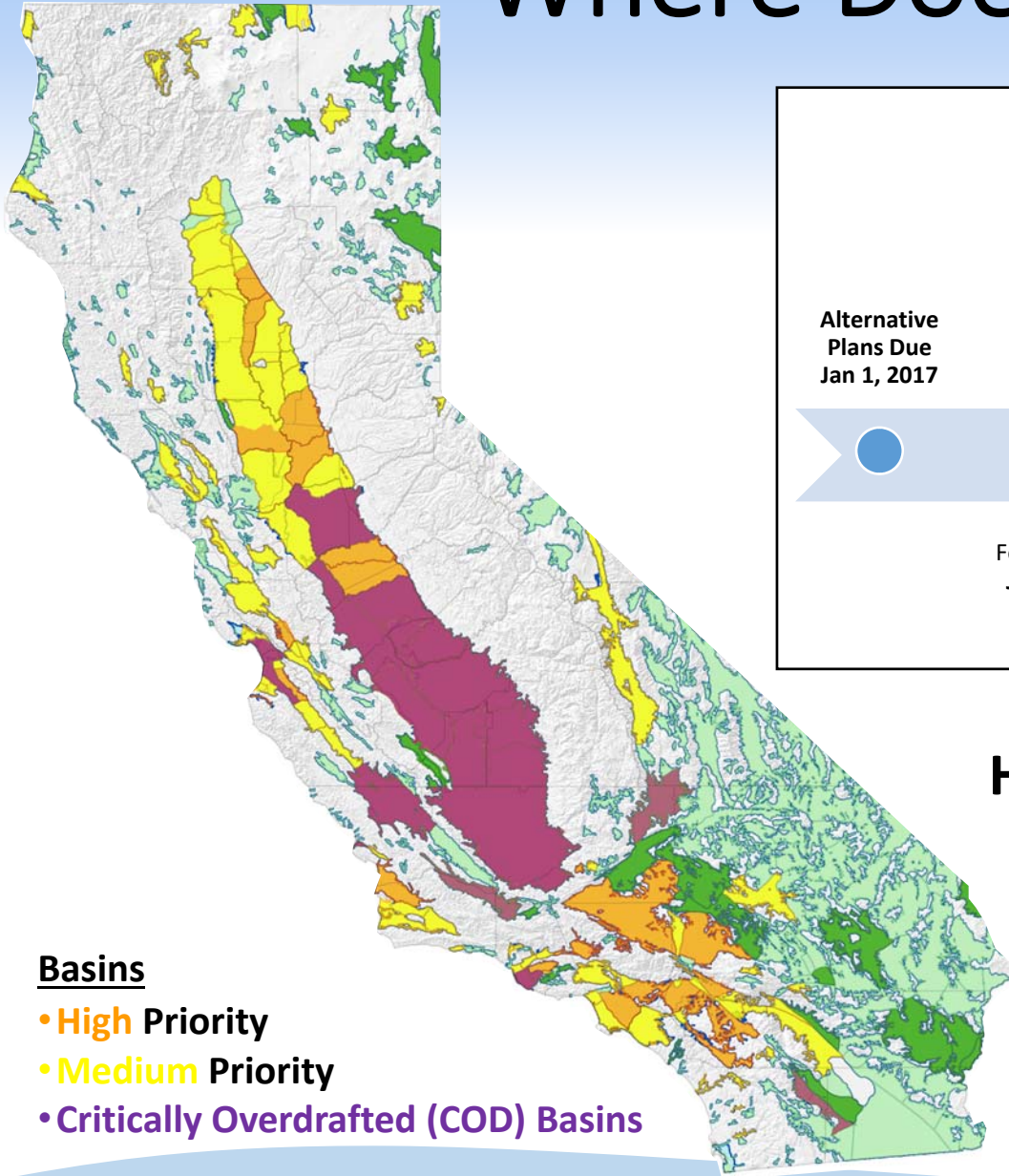
## SGMA Timeline:



## High & Medium Priority basins

- 96% of groundwater use
- 88% of overlying population

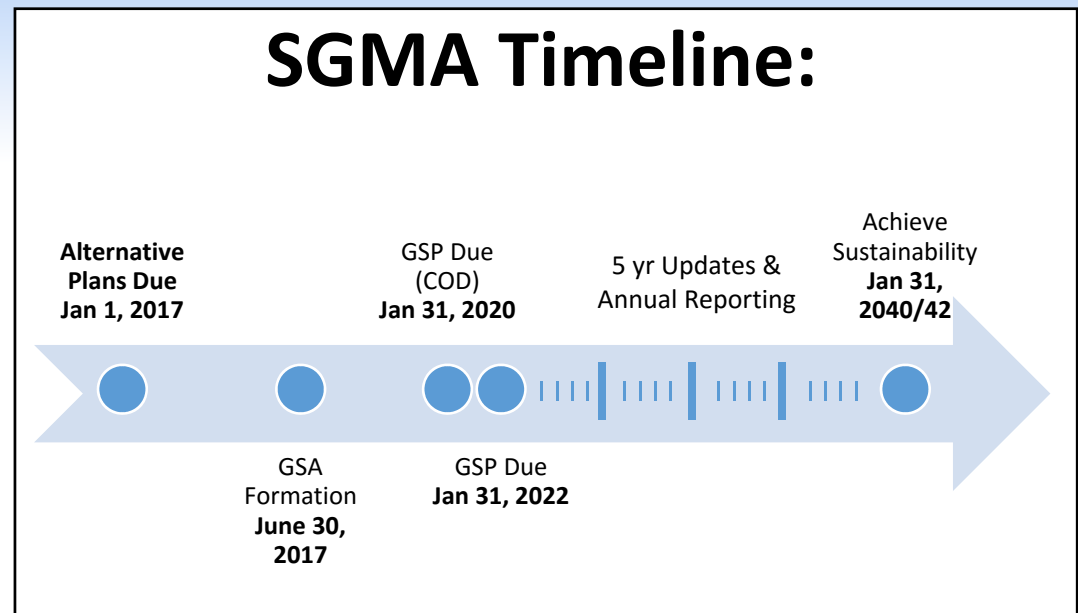
# Where Does SGMA Apply?



## Basins

- **High Priority**
- **Medium Priority**
- **Critically Overdrafted (COD) Basins**

## SGMA Timeline:



## High & Medium Priority basins

- **96% of groundwater use**
- **88% of overlying population**



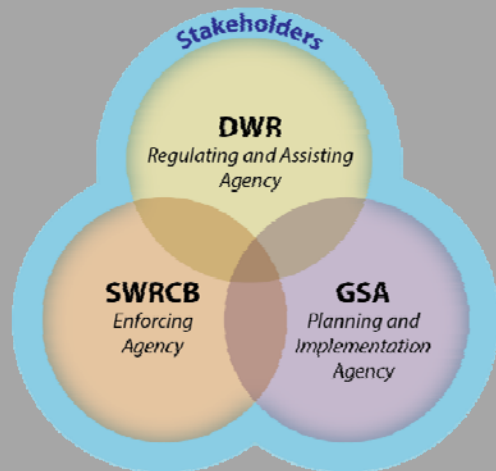
# SGMA Overview

## Local Control



*“A central feature of these bills is the recognition that groundwater management in California is best accomplished locally.”*

Governor Jerry Brown, September 2014



## Sustainability

*Avoid Six Undesirable Results*



Lowering  
GW Levels



Reduction  
of Storage



Seawater  
Intrusion



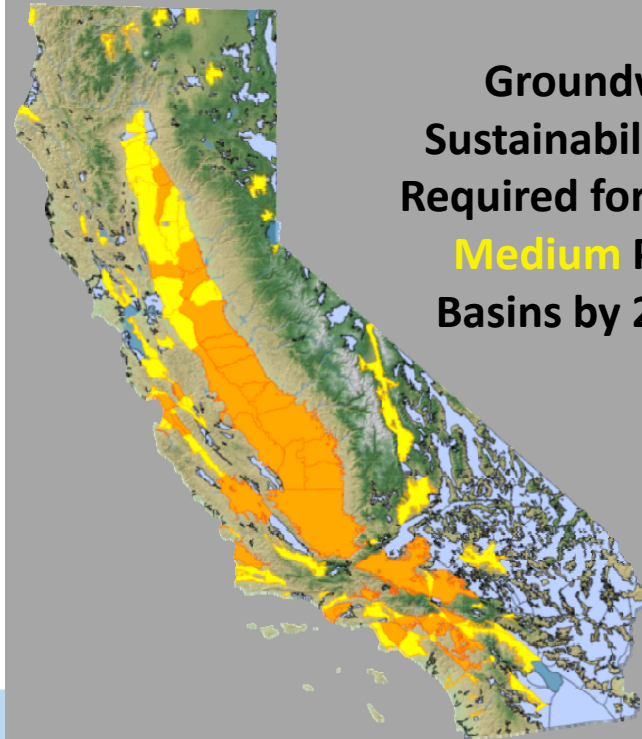
Degraded  
Quality



Land  
Subsidence



Surface Water  
Depletion



Groundwater  
Sustainability Plans  
Required for **High** and  
**Medium** Priority  
Basins by 2020/22

# SGMA Due Dates and Achievements

## 2015 and 2016

- ✓ **Initial Basin Prioritization: §10723.4**
  - Completed by January 31, 2015
- ✓ **Regulations for Modifying Groundwater Basin Boundaries: §10722.2**
  - Completed by January 1, 2016
- ✓ **Identification of Critically Overdrafted Basins: §12924**
  - Completed January 2016, Updated October 2016
- ✓ **Groundwater Sustainability Plan and Alternatives Regulations: §10733.2**
  - Completed May 18, 2016
- ✓ **Modifying Basin Boundaries (Round 1)**
  - Completed October 11, 2016
- ✓ **Water Available for Replenishment: §10729(c)**
  - Completed in January, 2017

## 2017 and 2018

- ✓ **Bulletin 118: §12924**
  - Interim Update due January 2017;
  - Comprehensive Update due 2020
- ✓ **Best Management Practices: §10729(d)**
  - Completed by January 1, 2017
- Revised Basin Prioritization**
  - Fall 2017 (Tentative)
- Alternatives Reviews**
  - Begins January 1, 2017
- ✓ **Groundwater Sustainability Agency Formation: §10723**
  - Due by June 30, 2017
- Prop 1 – SGM Grant Program (Round 2)**
  - Late summer 2017 (Tentative)
- Modifying Basin Boundaries (Round 2)**
  - 2018 (Tentative)

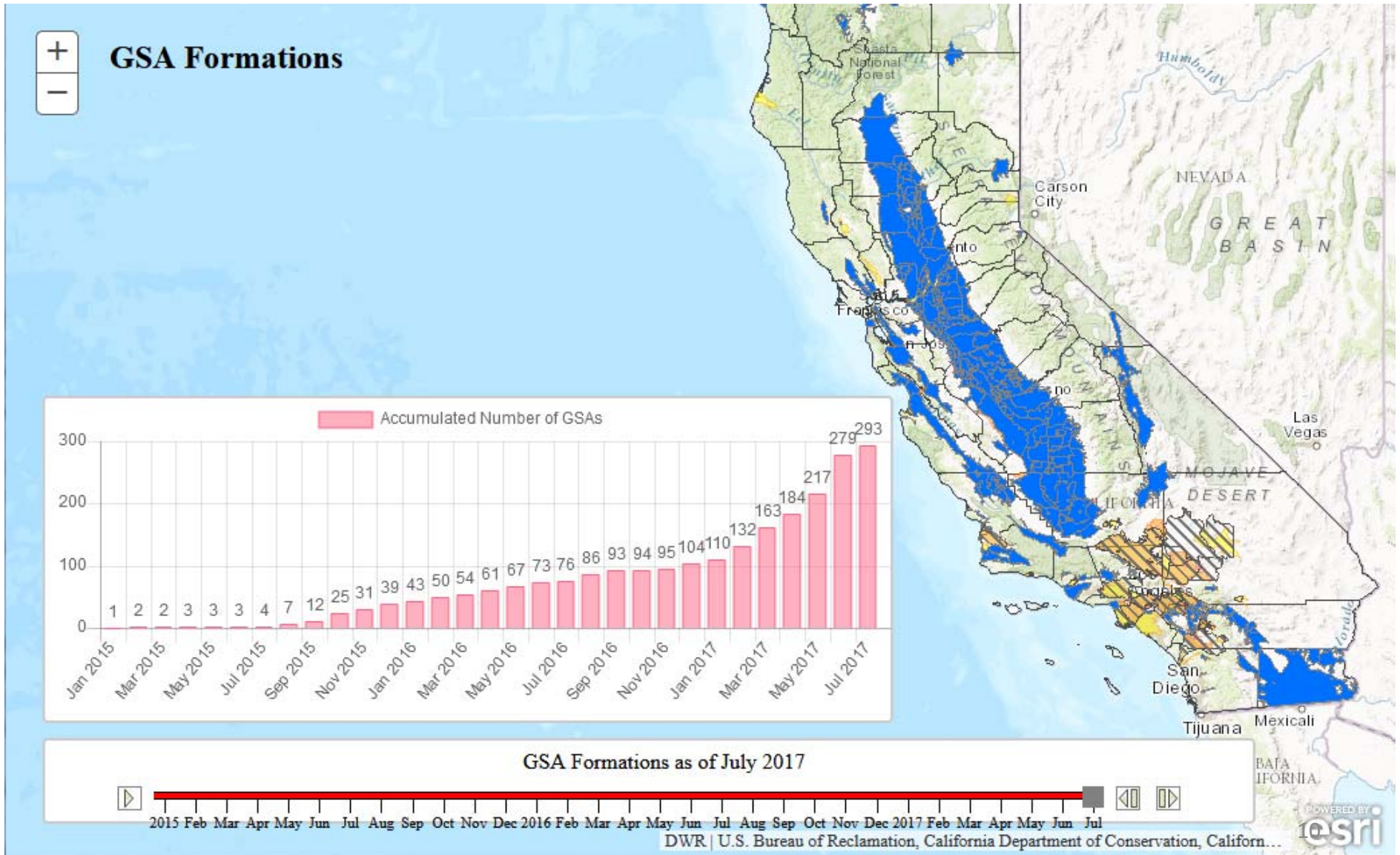




# **GSA Formation**

# GSA Formation Summary

<http://sgma.water.ca.gov/portal/#gsa>





# Alternatives



# Alternatives Submitted by January 1, 2017

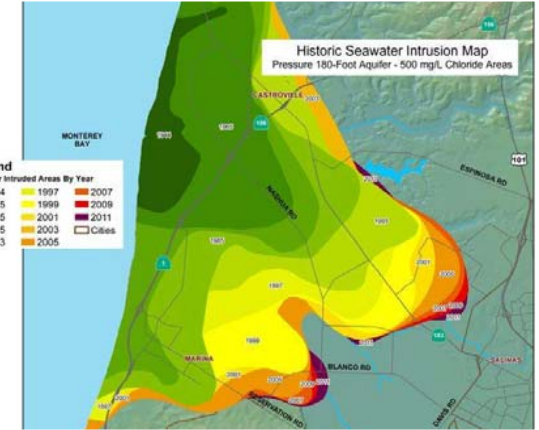
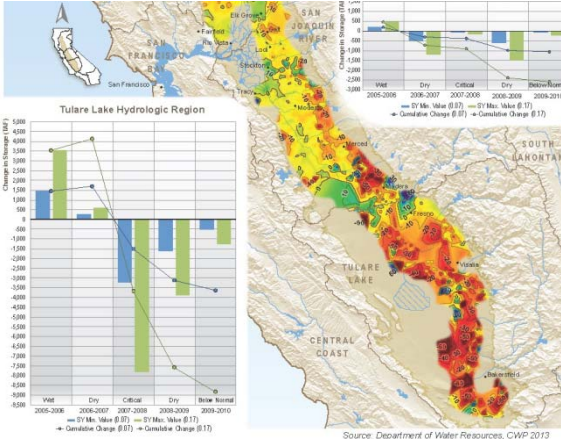
<http://sgma.water.ca.gov/portal/#alt>

Submitting Agency	Basin
Alameda County Water District	2-009.01 SANTA CLARA VALLEY NILES CONE
Alameda County Water District	2-009.01 SANTA CLARA VALLEY NILES CONE
Coachella Valley Water District	7-021.01 COACHELLA VALLEY INDIO
Coachella Valley Water District	7-021.02 COACHELLA VALLEY MISSION CREEK
Humboldt County Public Works Department	1-010 EEL RIVER VALLEY
Lake County Watershed Protection District	5-014 SCOTTS VALLEY
Lake County Watershed Protection District	5-015 BIG VALLEY
Mojave Water Agency	6-042 UPPER MOJAVE RIVER VALLEY
Mojave Water Agency	6-040 LOWER MOJAVE RIVER VALLEY
Mojave Water Agency	7-012 WARREN VALLEY
Mojave Water Agency	6-043 EL MIRAGE VALLEY
Napa County	2-002.01 NAPA-SONOMA VALLEY NAPA VALLEY
Ojai Basin Groundwater Management Agency	4-002 OJAI VALLEY
Orange County Water District	8-001 COASTAL PLAIN OF ORANGE COUNTY
Pajaro Valley Water Management Agency	3-002.01 CORRALITOS PAJARO VALLEY
Sacramento Central Groundwater Authority	5-021.65 SACRAMENTO VALLEY SOUTH AMERICAN
Santa Clara Valley Water District	2-009.02 SANTA CLARA VALLEY SANTA CLARA
Santa Clara Valley Water District	3-003.01 GILROY-HOLLISTER VALLEY LLAGAS AREA
South Tahoe Public Utility District	6-005.01 TAHOE VALLEY TAHOE SOUTH
South Tahoe Public Utility District	6-005.01 TAHOE VALLEY TAHOE SOUTH
Sutter County	5-021.62 SACRAMENTO VALLEY SUTTER
Truckee Donner Public Utility District	6-067 MARTIS VALLEY
Water Replenishment District of Southern California	4-011.04 COASTAL PLAIN OF LOS ANGELES CENTRAL
Zone 7 Water Agency	2-010 LIVERMORE VALLEY





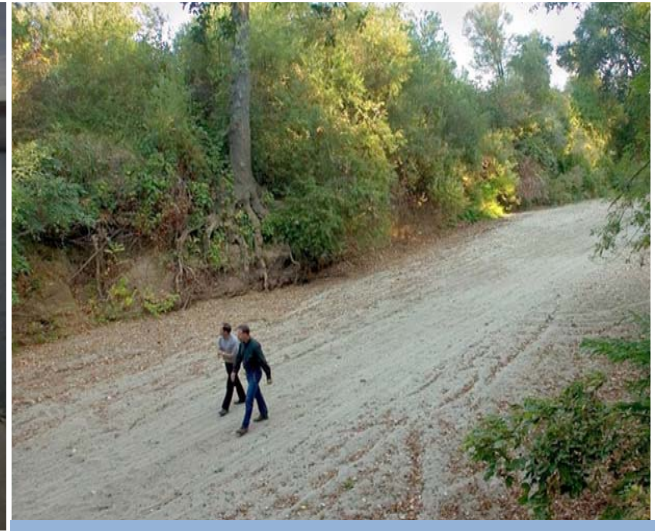
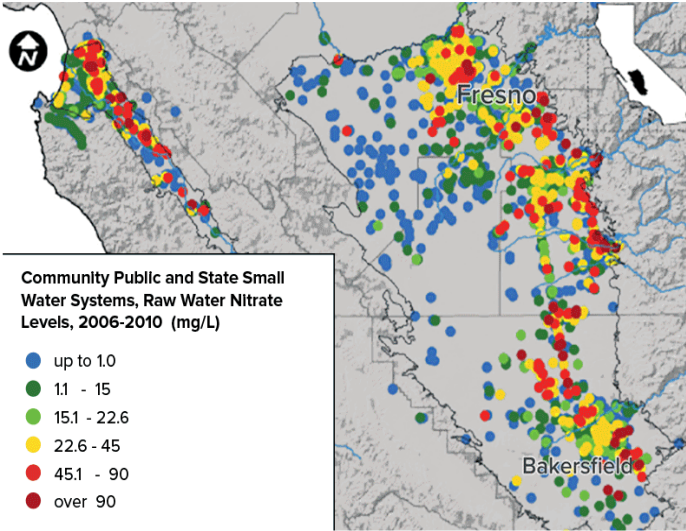
# Achieving Sustainable Yield and Avoidance of Undesirable Results



 **Lowering of GW Levels**

 **Reduction of GW Storage**

 **Seawater Intrusion**



 **Water Quality Degradation**

 **Land Subsidence**

 **Depletion of Interconnected Streams**



# Basin Boundary Modifications



# Basin Boundary Modifications

<http://sgma.water.ca.gov/basinmod>

- Initial Notification Period Now Open
- Tentative Schedule
  - **January 1, 2018** – Submission Period Opens
  - **March 31, 2018** – Submission Period Closes and 30-day Public Comment Period Opens
  - **April 30, 2018** – Public Comment Period Closes
  - **~July 2018** – Draft Modifications released
  - **~August 2018** – Final Modifications released



# Planning and Technical Assistance

# DWR SGMA Assistance

***“A central feature of SGMA is the recognition that groundwater management in California is best accomplished locally.”***

Governor Jerry Brown, September 2014



## Financial Assistance

*- Prop 1*

## Planning Assistance

*- Facilitation*

*- GSA Support*

## Technical Assistance

*- Statewide Datasets, Analysis, and Tools*

*- Best Management Practices*

*- Water Available for Replenishment Report*

***Engagement and Advisory Role***

**DWR  
Evaluation of  
GSPs**

**Sustainable  
Groundwater  
Management**

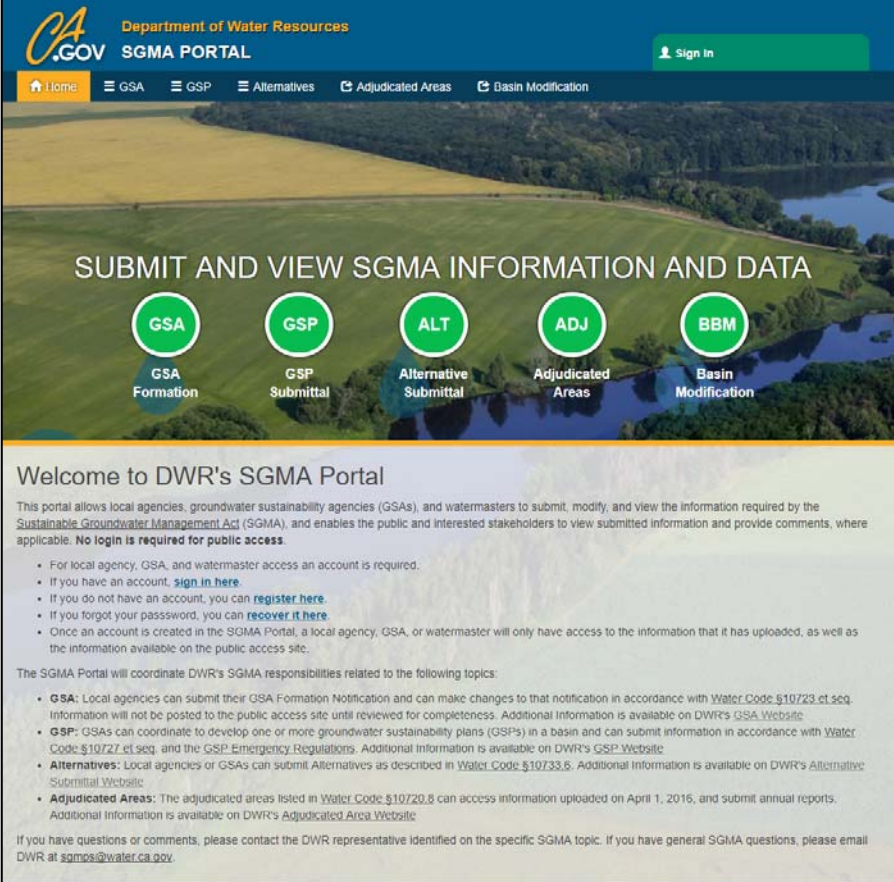
***Regulatory Role***



# SGMA Portal

<http://sgma.water.ca.gov/portal/>

- Submit and View SGMA Data
- Provides Opportunity to Comment
- Future Enhancements for GSP Reporting



The screenshot shows the SGMA Portal website. At the top, there is a blue header with the California Department of Water Resources logo and the text "SGMA PORTAL". A navigation menu includes "Home", "GSA", "GSP", "Alternatives", "Adjudicated Areas", and "Basin Modification". A "Sign in" button is located in the top right corner. Below the header is a large green banner with the text "SUBMIT AND VIEW SGMA INFORMATION AND DATA". Underneath the banner are five circular icons representing different SGMA categories: GSA (GSA Formation), GSP (GSP Submittal), ALT (Alternative Submittal), ADJ (Adjudicated Areas), and BBM (Basin Modification). Below the banner is a section titled "Welcome to DWR's SGMA Portal" which provides a brief overview of the portal's purpose and includes a list of links for registration, login, and password recovery. The bottom of the page contains detailed information about the portal's coordination with DWR's SGMA responsibilities, including links to various websites for GSA, GSP, Alternatives, and Adjudicated Areas.



# Next Steps

# Next Steps & Upcoming Events

- Support GSAs with GSP development
  - Continued development of data and tools
  - Engagement with the public and GSAs
- ❖ Central Valley SGMA Groundwater Sustainability Plan (GSP) Workshop for GSAs
  - Wednesday, September 20, 2017
  - 1 to 5 pm, Clovis Veterans Memorial
- Evaluation of Alternatives and GSPs





**Thank You**