



IRWM 2.0 The Next Generation

*Presented By:
Lynn Rodriguez and Rick Viergutz*



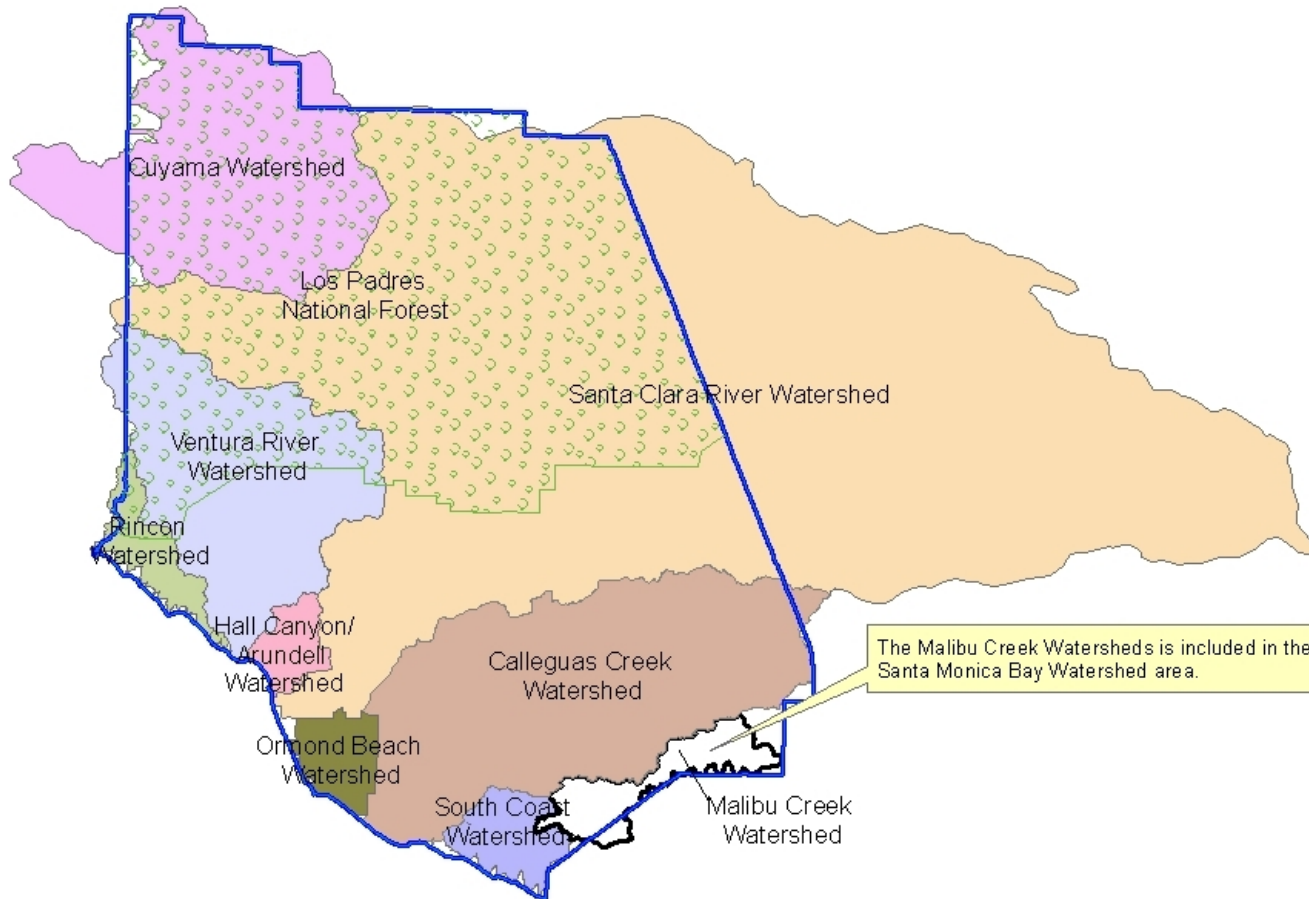


Should IRWM play a role in
Groundwater Sustainability Agencies?

Ventura County



- County population ~846,000
- 10 cities
- 1,843 square miles
- 50% in National Forest
- Three major watersheds
- IRWM Region is entire County – formed in 2006
- Approximately 170 separate water purveyors



Legend

 Ventura Region Boundary

Ventura Integrated Watershed Management Region



Foundations for Success



- 💧 Positive working relationships, partnerships and trust
- 💧 Leadership
- 💧 Inclusive IRWM stakeholder group
- 💧 Sustainability of IRWM principles
- 💧 State and local funding
- 💧 Collaboration
- 💧 Project synergy and integration

Ventura County



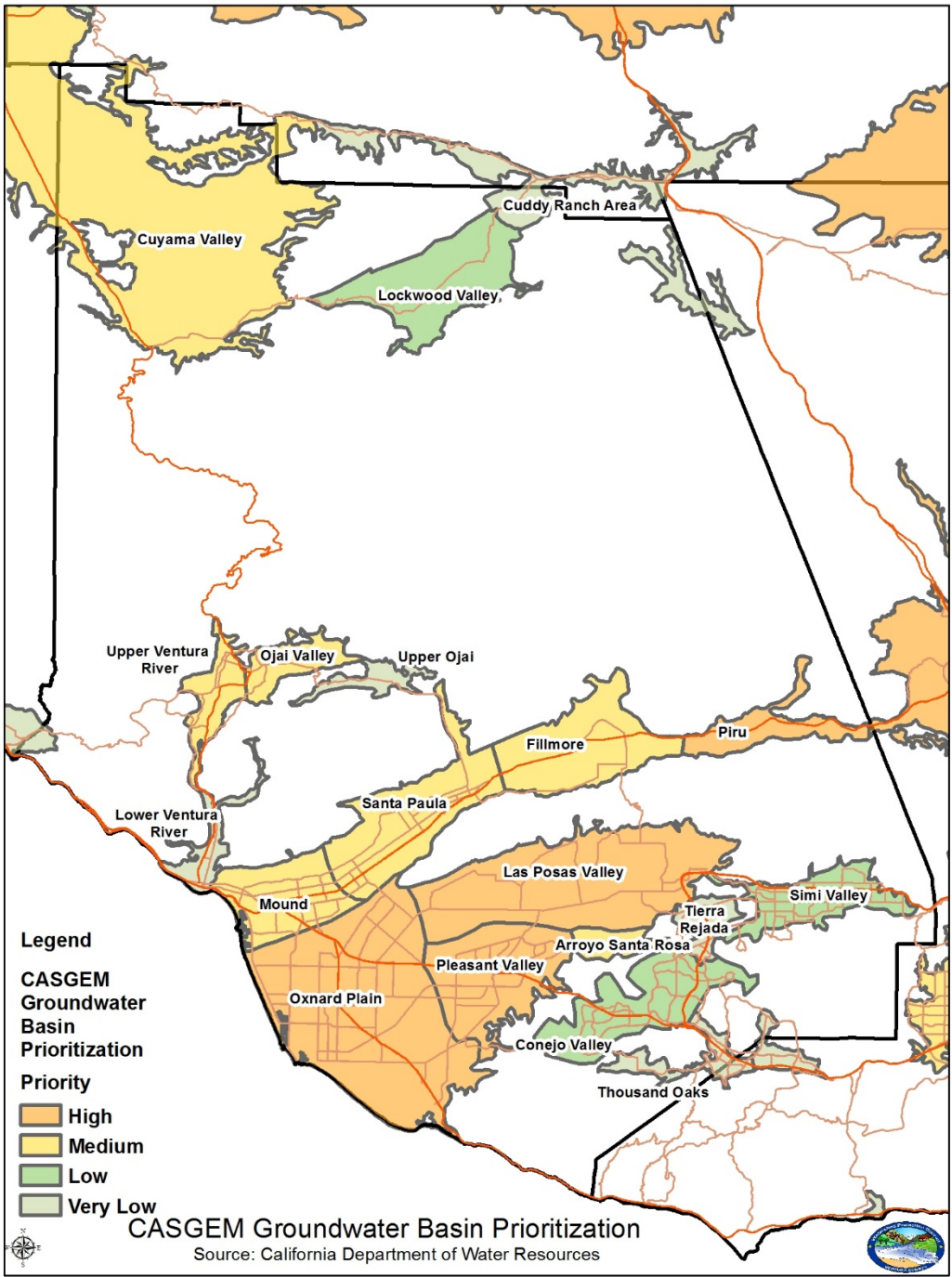
- Groundwater approximately 60% of the County's water supply
 - ~70% extracted by agriculture
 - ~30% municipal, industrial, domestic
 - Ag groundwater demand \geq 200,000 AF in 2014
- Ag is a 2.1 billion dollar industry
 - 9th in CA and 10th in nation for productivity
- Countywide irrigated acres \sim 100,000

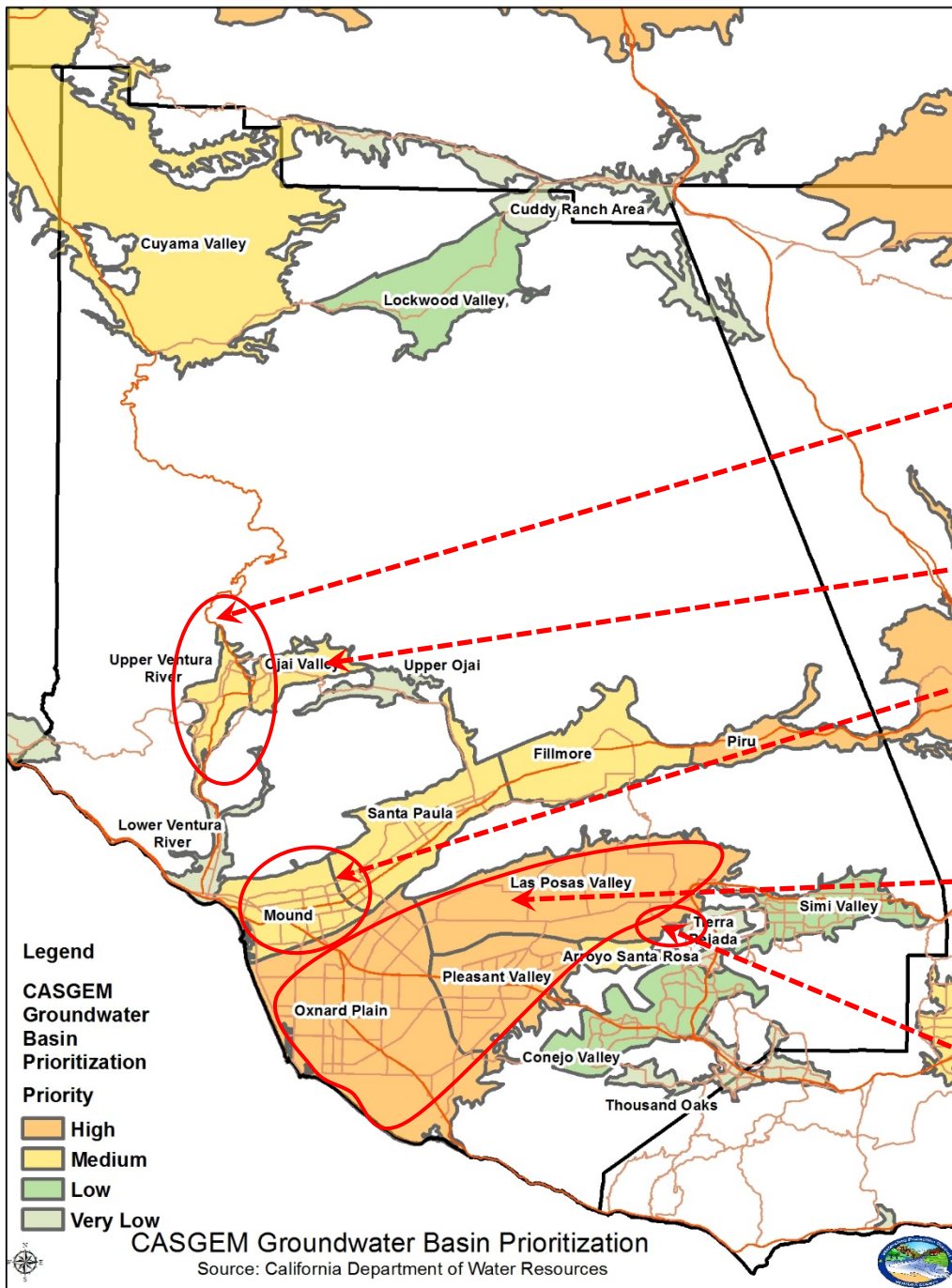
Groundwater Issues



- 10% of all Medium and High Priority Basins are in Ventura County
- 7 Medium + 4 High Priority Basins
 - Groundwater conditions vary
 - Significant concern Oxnard Plain, PV, Las Posas
- Existing “water” governance structures vary
 - Existing GMAs will become GSAs

CASGEM Basin Prioritization





MOU to form a GSA:
 County, City of Ventura,
 Water Districts

Ojai Basin GMA
 (exclusive local agency)

MOU to form a GSA:
 County, City of Ventura,
 UWCD

Fox Canyon GMA
 (exclusive local agency)

Self-Elected: Camrosa
 Water District, followed
 by County of Ventura

Comparison of Requirements

SGMA	IRWM in Ventura County
Forced Collaboration in GSA Formation. Section 10723.2. of SGMA specifies requirement for inclusion.	Collaboration required in order to get Grant funding
Governance at discretion of GSA members <i>Inclusion of diverse interested parties</i>	Regional Water Management Group (3 members 2 of which must be water supply agencies) <i>Diverse and inclusive stakeholder process required</i>
GSAs will have a number of authorities (i.e. groundwater management, replenishment fees)	IRWM process is required by State, but IRWM programs do not have regulatory authorities.
Focused on Med and High Priority GW Basins	Focused on watersheds
In Support of Projects that serve the Groundwater Sustainability Plan	In Support of projects that serve the IRWM plan

SGMA- Interested Parties

Includes but not limited to:

- Holders of overlying groundwater rights, including: Domestic well owners, municipal well operators, public water systems.
- Local land use planning agencies
- Environmental users of groundwater
- Surface water users (where in connection with groundwater)
- Disadvantaged communities
- CASGEM monitoring entities
- CA Native American tribes
- Federal Government

Ventura County IRWM Stakeholder Entities

- Cities
- Wholesale water agencies
- Major retail water agencies
- Wastewater agencies
- County agencies
- Flood management agencies
- Groundwater basin management authorities
- Environmental stewardship organizations
- Community organizations and recreational Interests
- Native American tribes and disadvantaged communities
- Agricultural and business groups
- State, federal and regional agencies and universities

- What are the significant differences in the make up of stakeholder (interested party) groups for IRWM vs. GSAs?
- SGMA requires inclusion of specific interested parties (but does not limit) and IRWM is open to anyone who has an interest
- Neither group can exclude anyone with an interest in the process





Questions?