

The 2012-14 Drought: Water Conditions

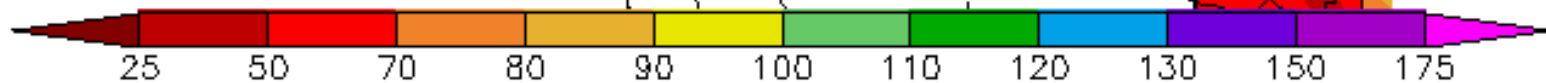
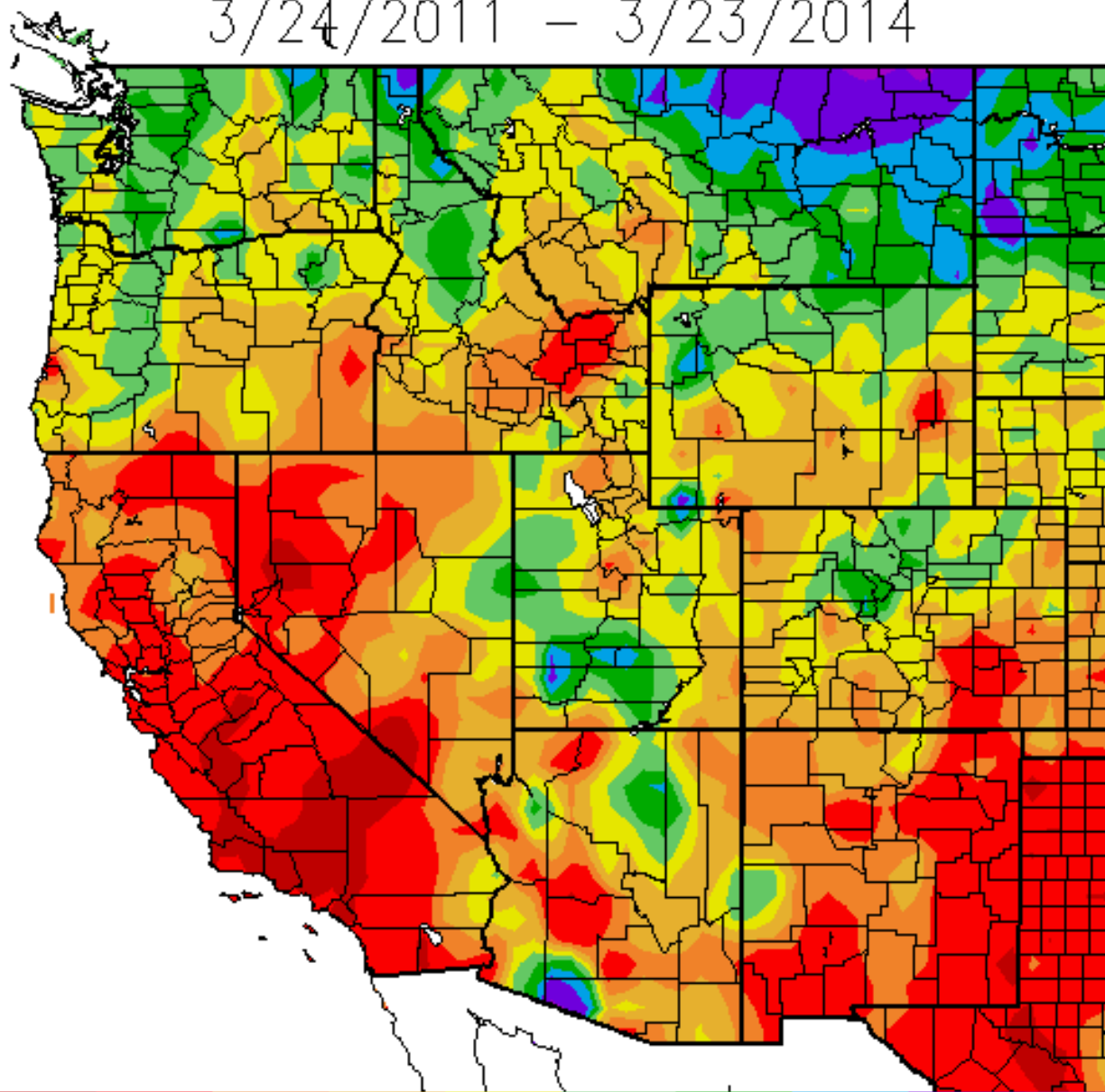
Jeanine Jones

Department of Water Resources

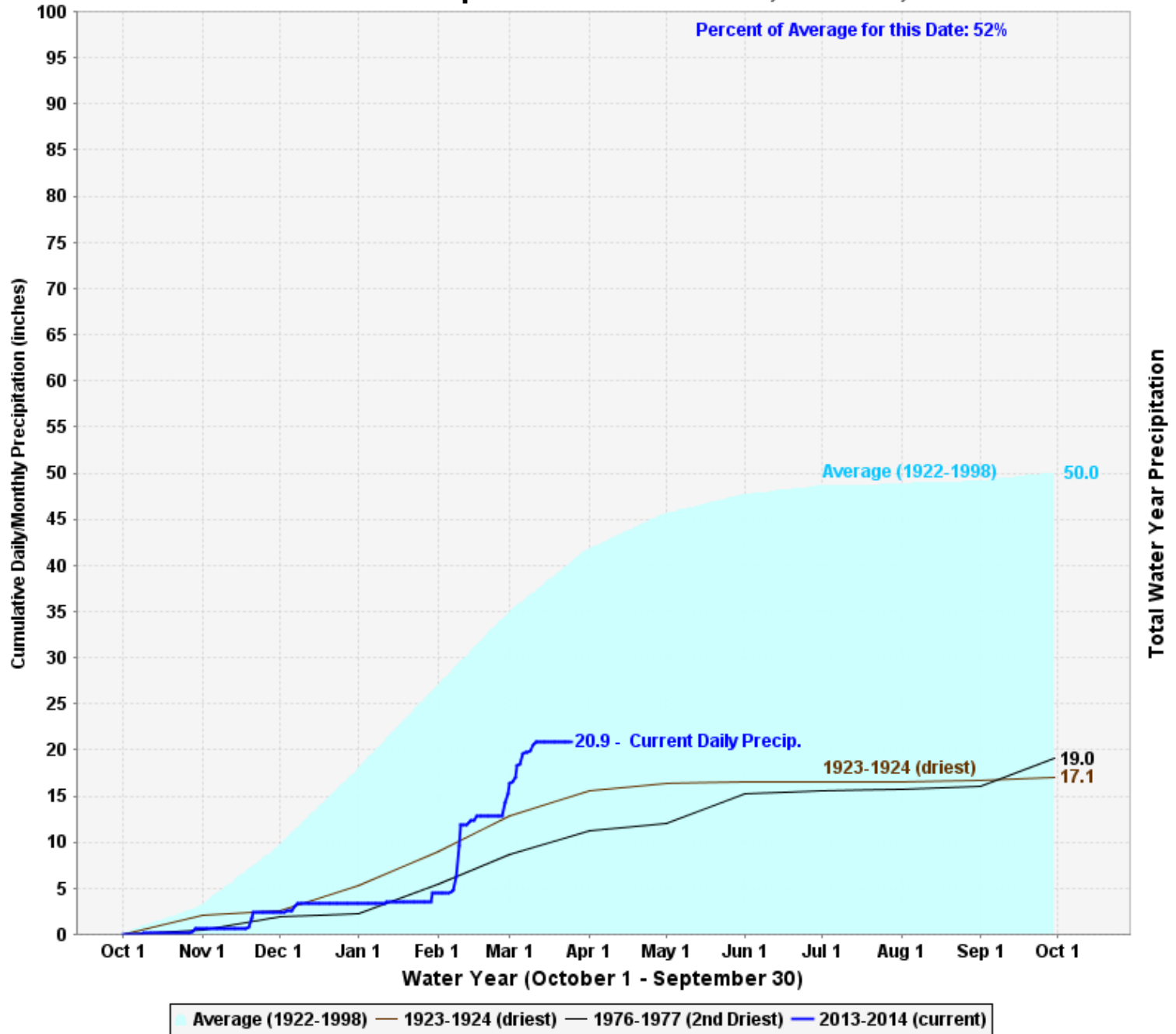


Percent of Average Precipitation (%)

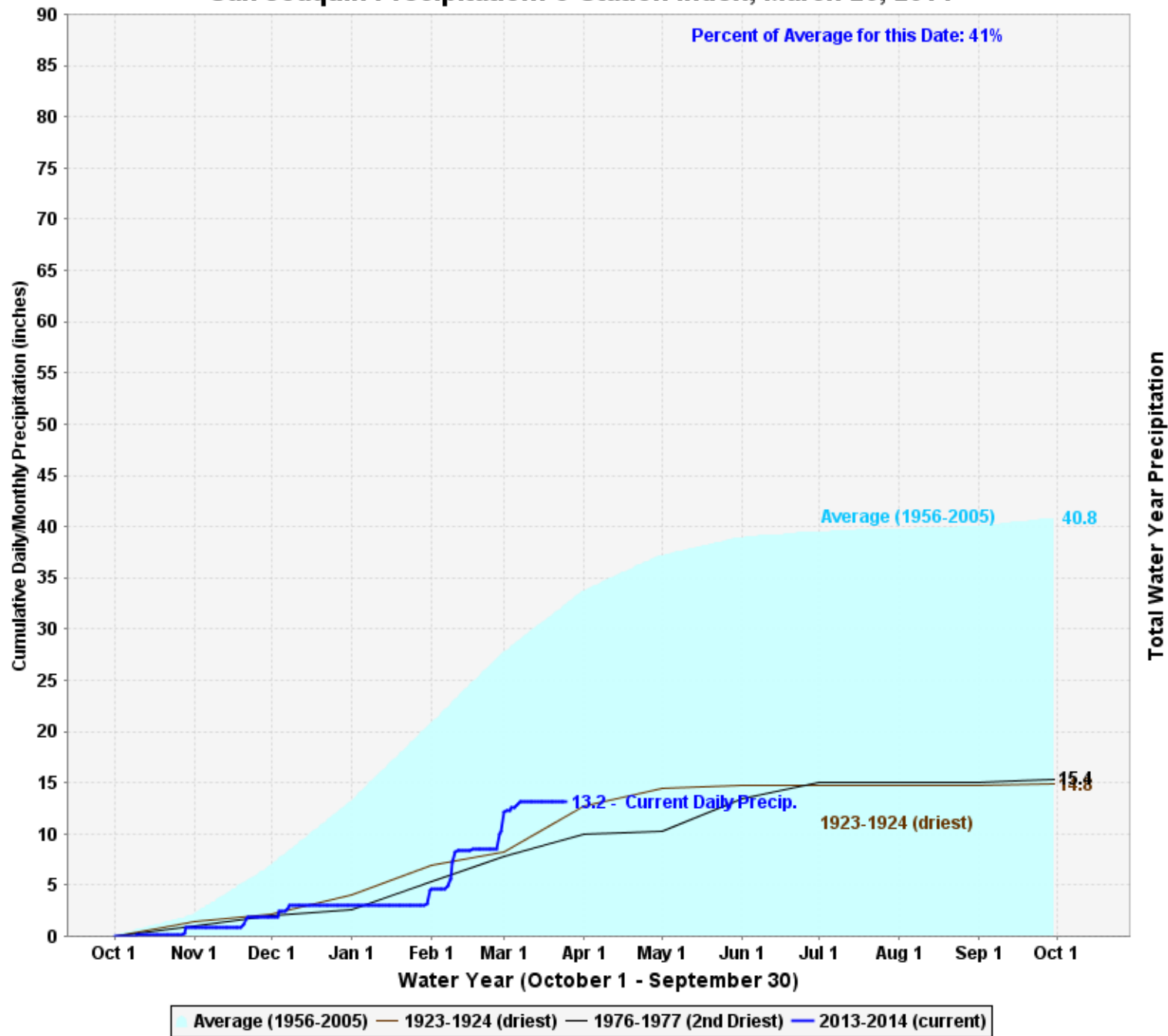
3/24/2011 – 3/23/2014



Northern Sierra Precipitation: 8-Station Index, March 26, 2014



San Joaquin Precipitation: 5-Station Index, March 26, 2014

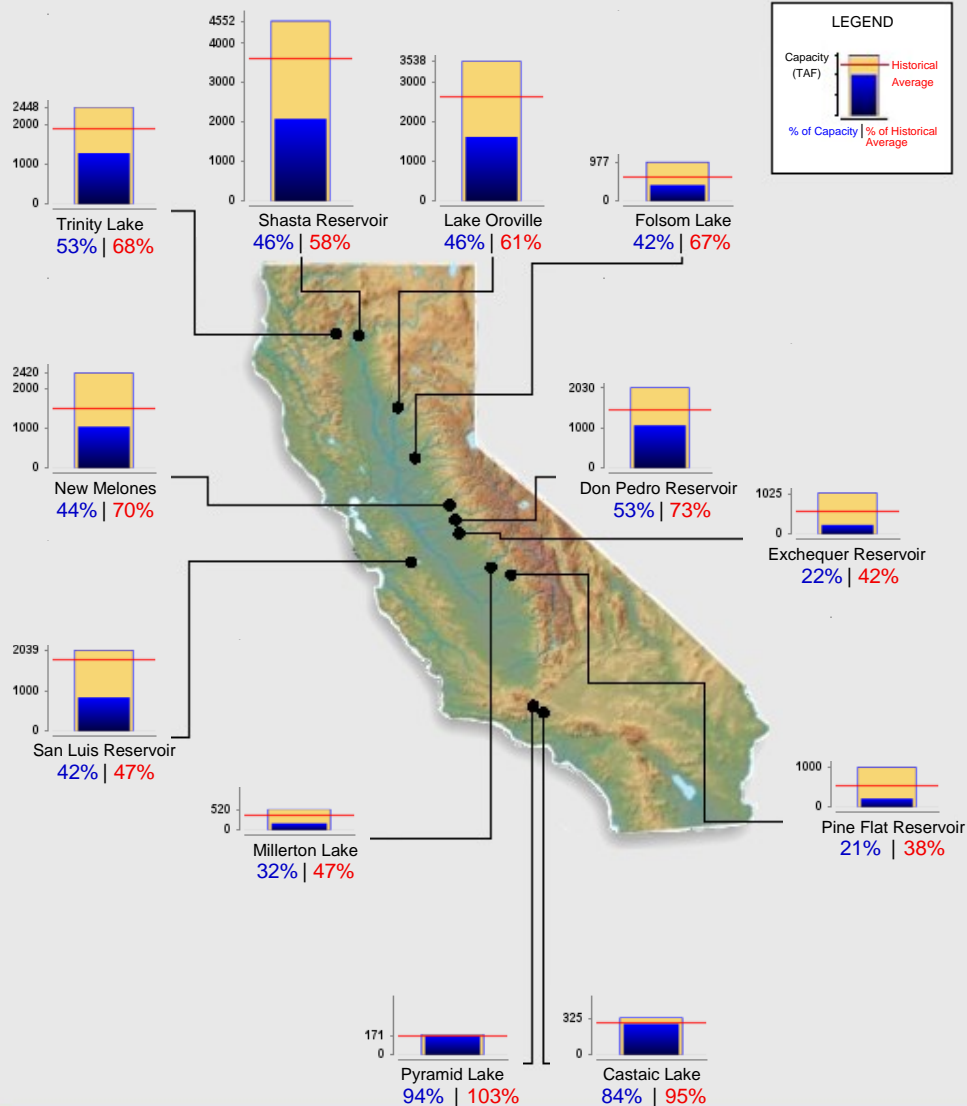




Reservoir Conditions

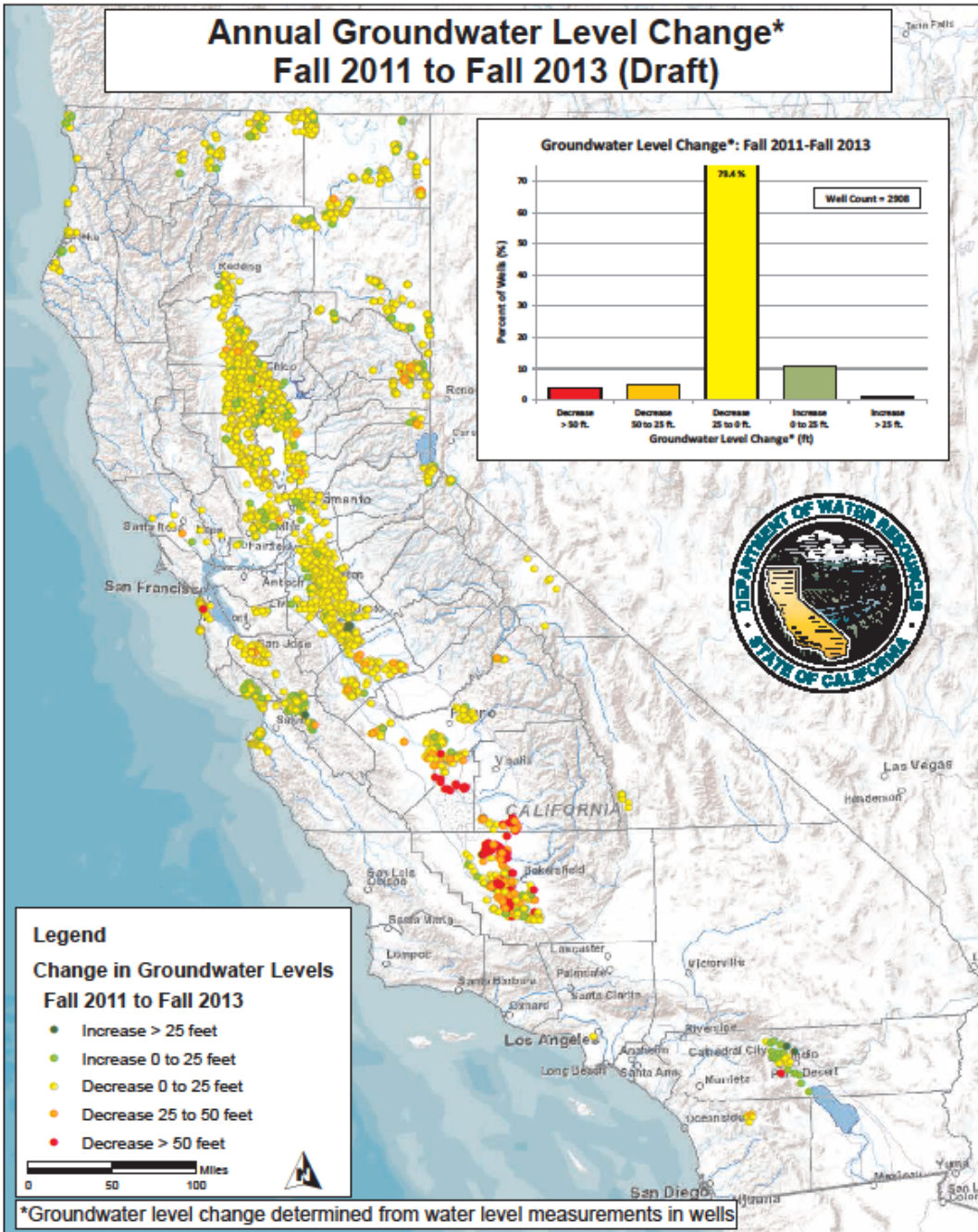
Ending At Midnight - March 25, 2014

CURRENT RESERVOIR CONDITIONS



Estimated end of March statewide reservoir storage about 68% of avg.

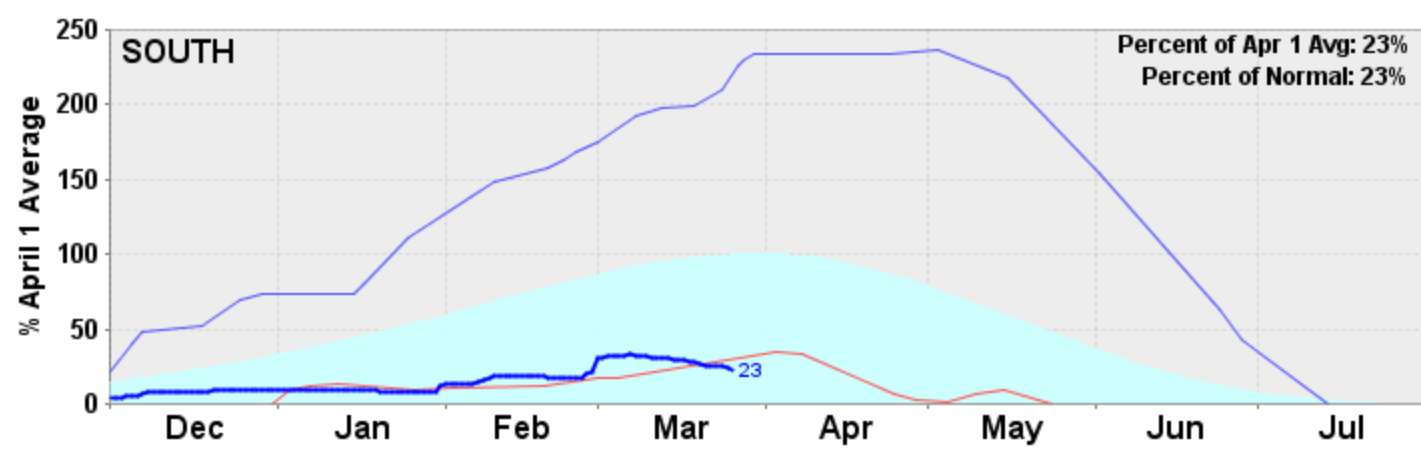
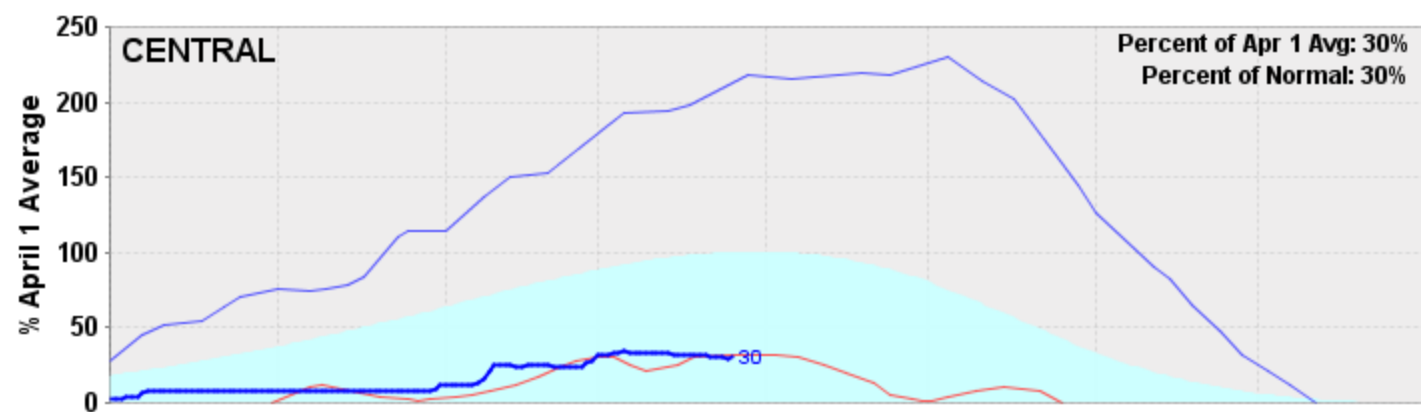
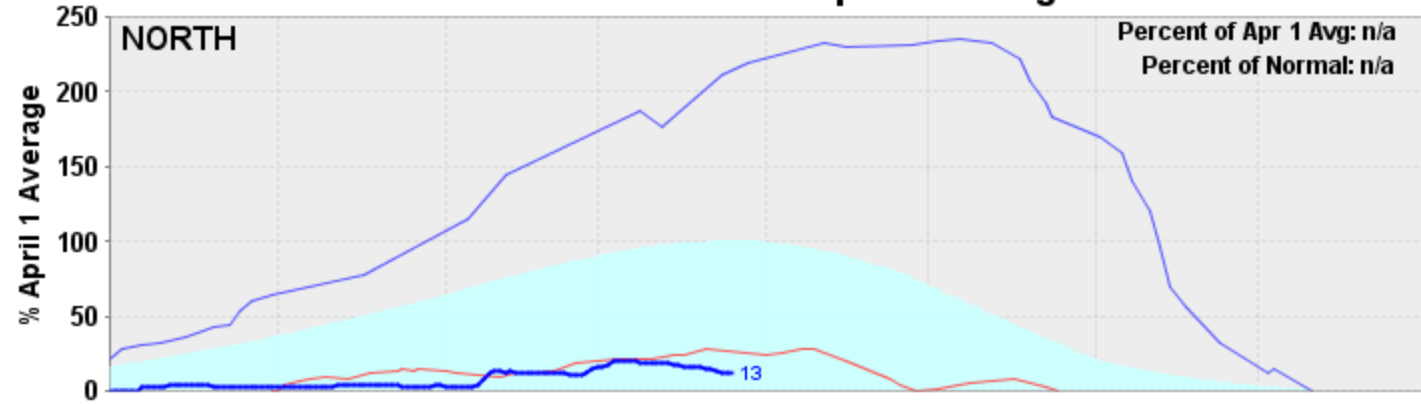
Annual Groundwater Level Change* Fall 2011 to Fall 2013 (Draft)



Draft -

Map and chart based on available data from the DWR Water Data Library as of 12/23/2013
Document Name: DOTMAP_F2011_F2013_JJ Updated: 12/23/2013 Print Date: 12/23/2013

California Snow Water Content - Percent of April 1 Average For: 26-Mar-2014



Average — 1976-1977 (min) — 1982-1983 (max) — 2013-2014 (current)

What About 2015?

- Important to conserve storage for critical needs if 2015 is dry
- NOAA: 50% chance of El Niño developing in summer or fall. (Weak to moderate El Niño not predictive for CA precip, strong El Niño shows signal for SoCal)
- DWR experimental winter outlook forecast released in November

