

# Co-Equal Responsibilities

- Act as a primary state agency to implement ecosystem restoration in the Delta, and
- Support efforts that advance environmental protection and the economic well-being of Delta residents



# Water Through the Bay Delta

■ Supplies Bay Area, Central Valley & So. California

Bay Area – 33%

Some regions up to  
100% dependent on the  
Delta

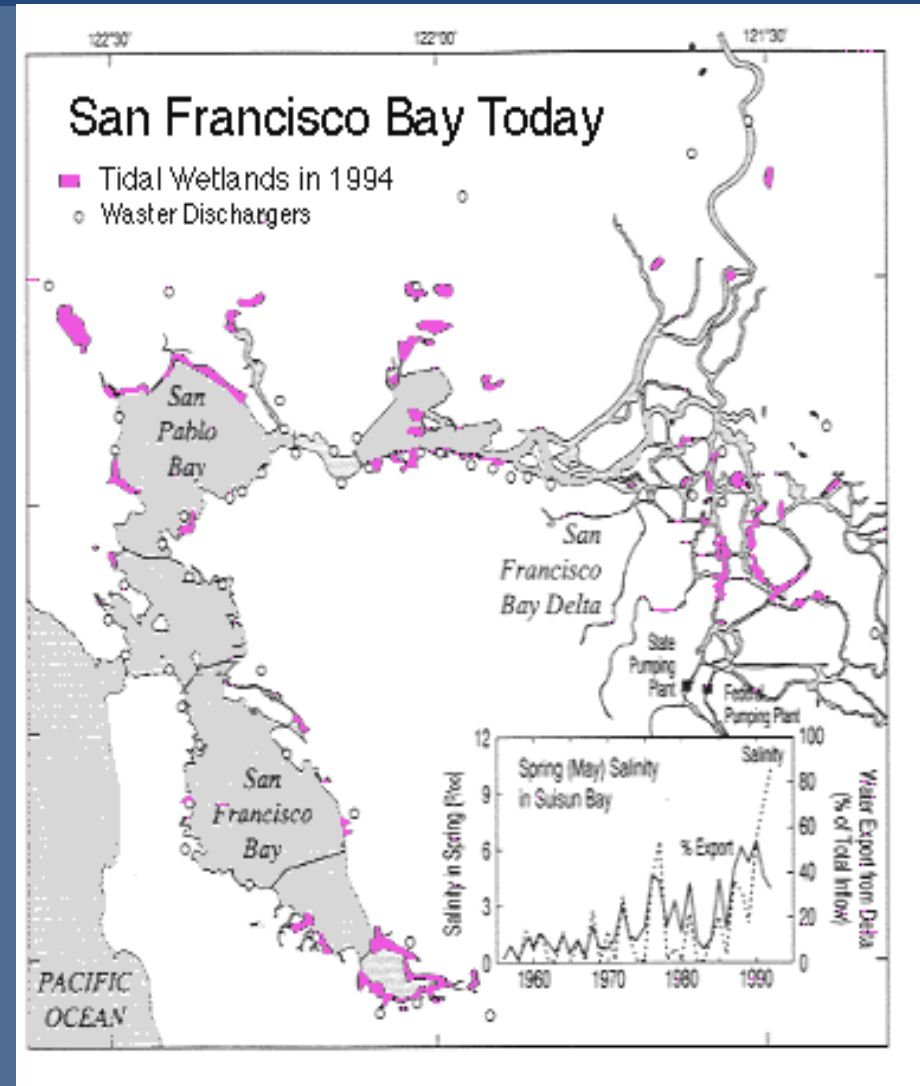
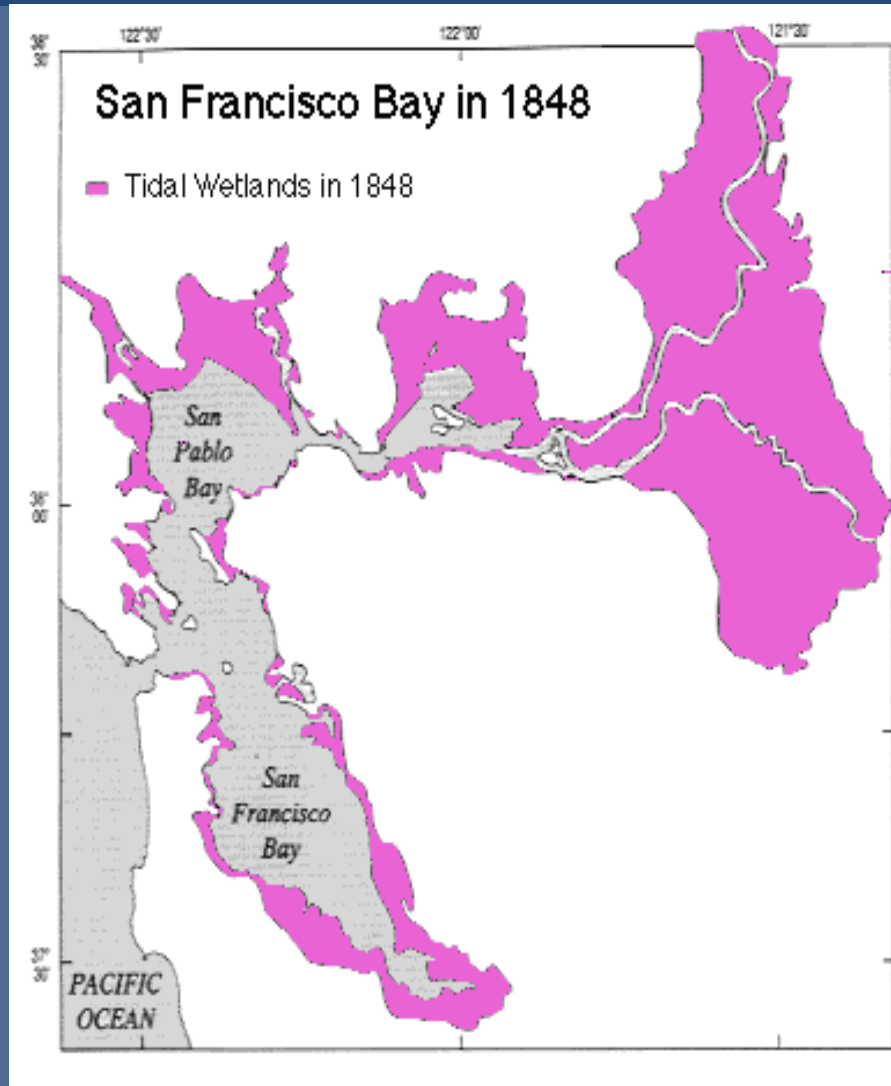
San Joaquin Valley – 23 to 90%

Southern Cal – 30%



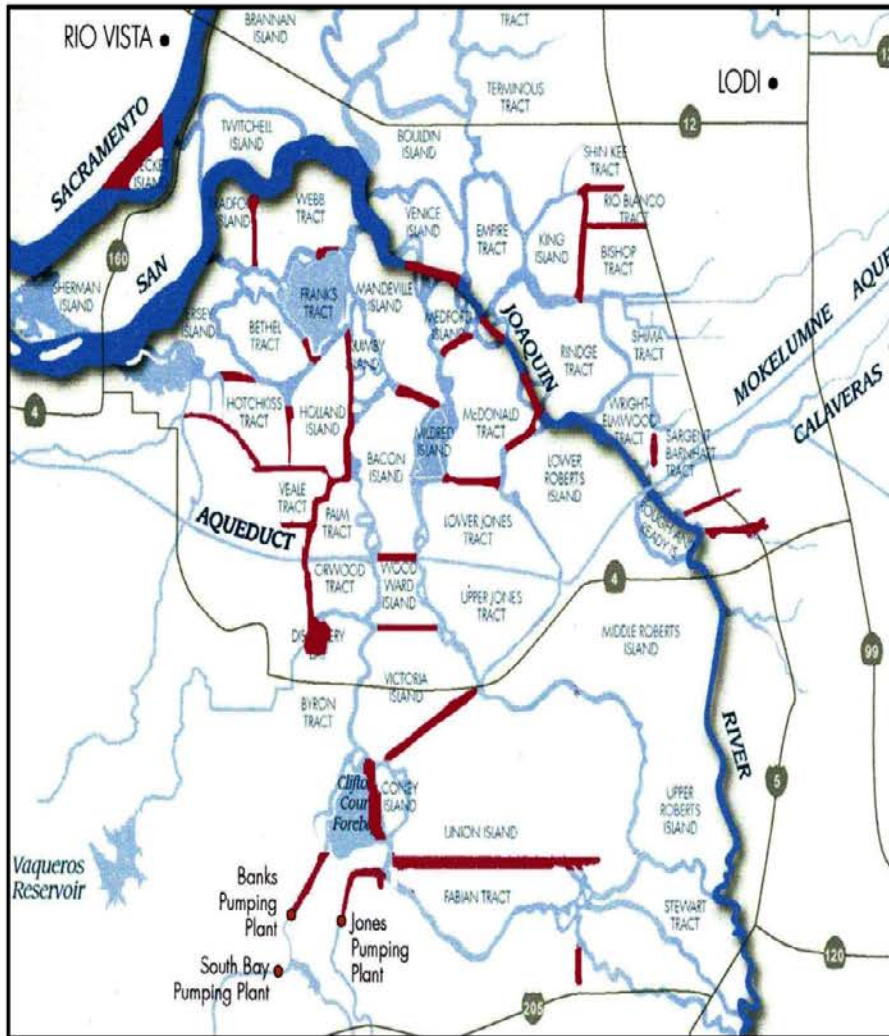
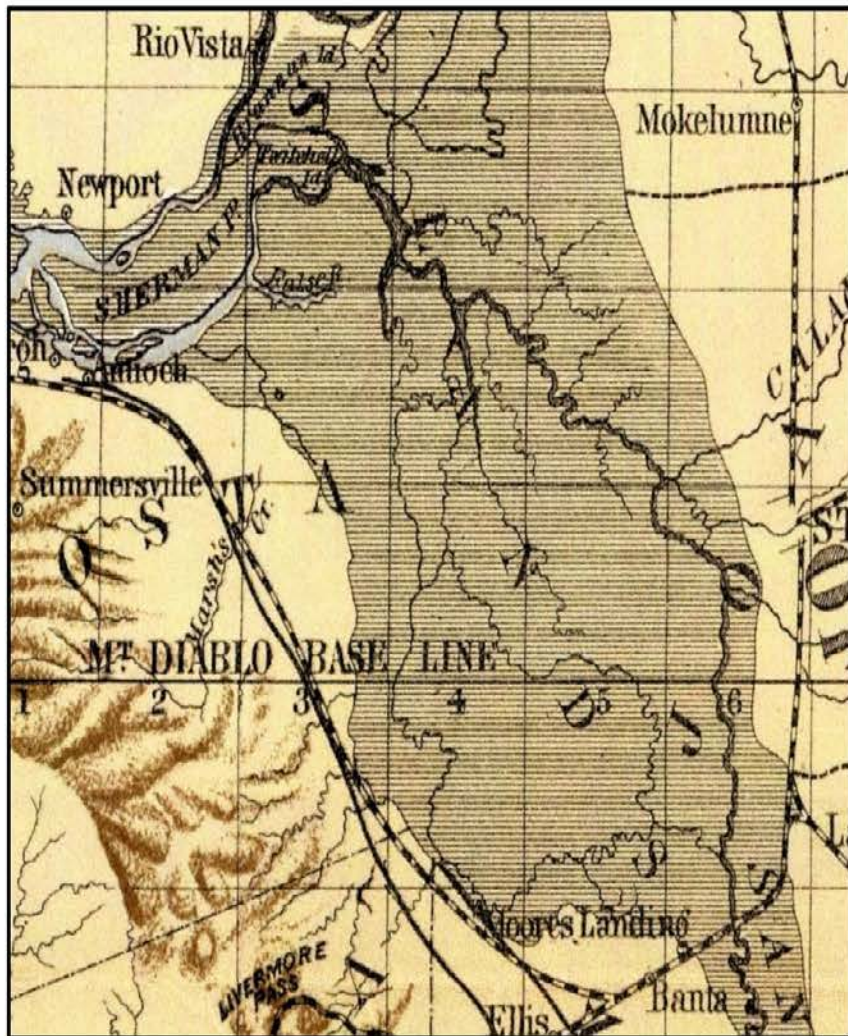


# San Francisco Bay and Delta Tidal Marshes – Historical and Current Conditions





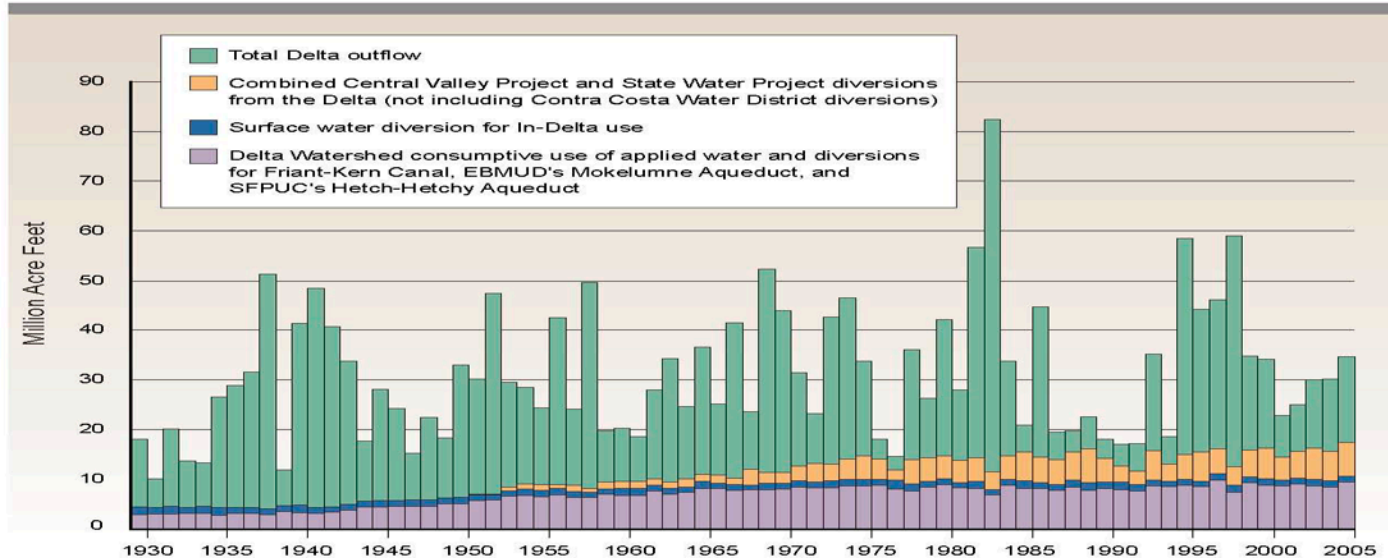
# Historical and Current Delta





# Diversions and Exports

**Figure 7b. Historic Diversions before the Delta, in-Delta Uses and Exports from the Delta, plus Outflows**



**Trends in Destinations and Uses**

Period	Average Annual Total (MAF)	Outflow	in-Delta	Exports	Delta Watershed
1930 to 1949	25.80	81%	5%	0%	14%
1950 to 1969	31.71	67%	4%	4%	24%
1970 to 1989	34.34	51%	5%	15%	29%
1990 to 2005	32.85	48%	4%	17%	31%

When the averages of 20-year periods are compared, these data show:

- Outflows to the ocean go down from 81% to 48% of total flows;
- In-Delta uses are essentially constant at 4% to 5% of total flows;
- Exports of water taken in the Delta but conveyed elsewhere go up, from none to 17% of total flows; and
- In-Delta watershed (before reaching Delta) uses also go up, from 14% to 31% of total flows (some of these are exported from the Delta watershed).

Source: measured, calculated and modeled from an array of data sources as compiled by Tully and Young, Inc.



SACRAMENTO - SAN JOAQUIN  
**DELTA CONSERVANCY**  
A California State Agency

# Invasive Species



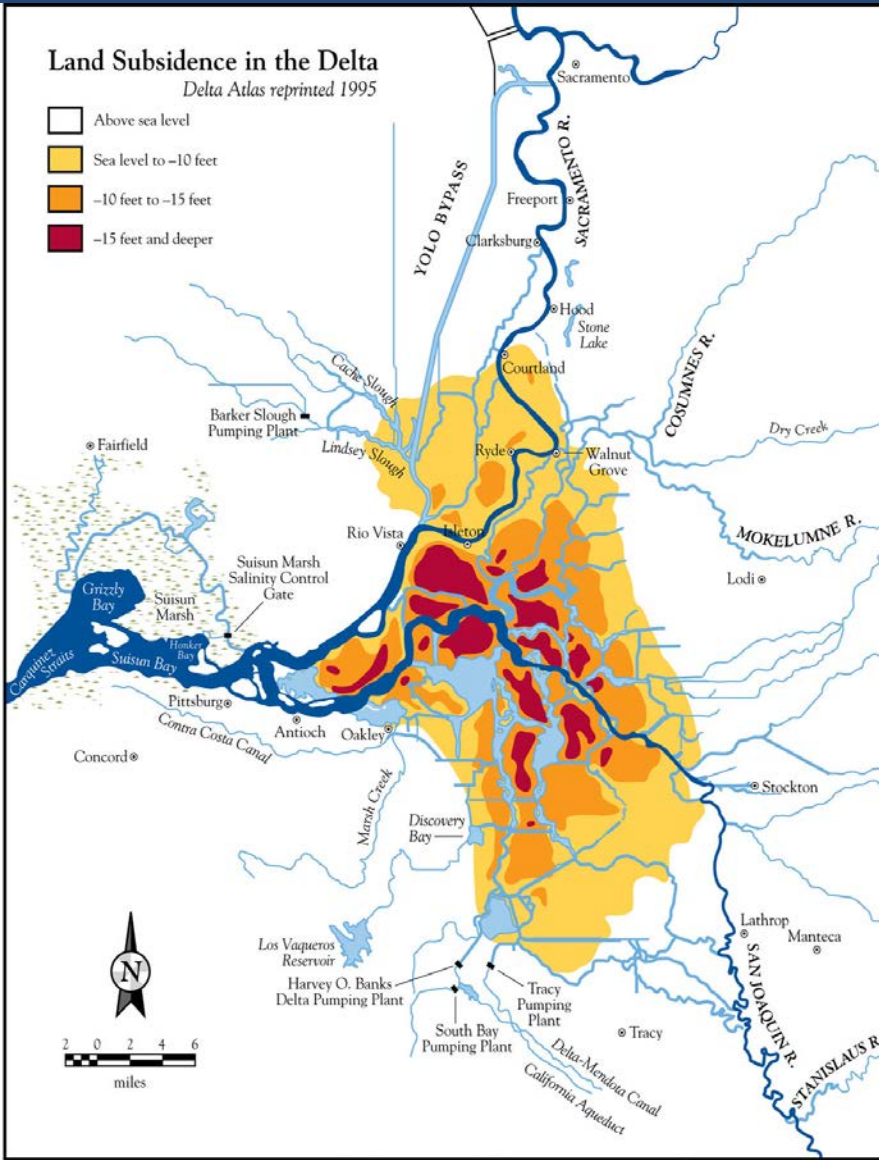
© Dan Minchin



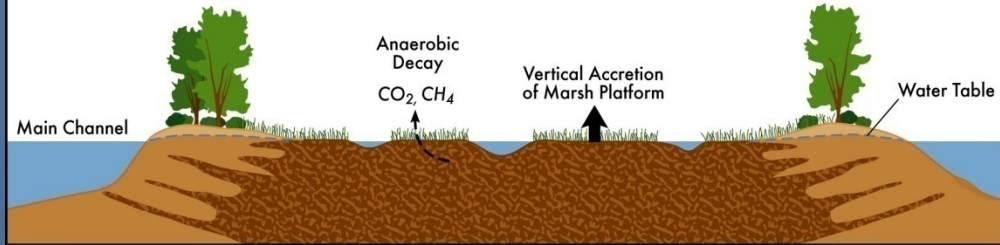
# Subsidence: Past and Future

**Land Subsidence in the Delta**  
*Delta Atlas reprinted 1995*

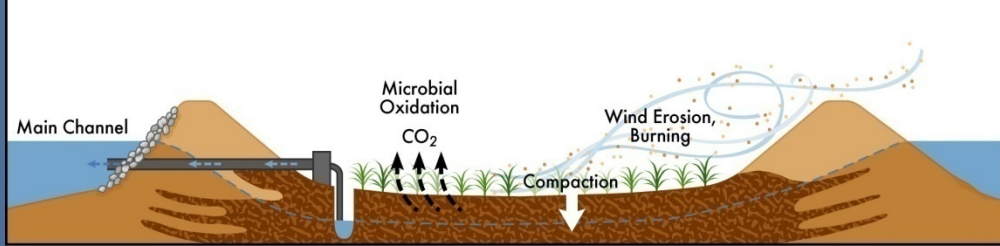
- Above sea level
- Sea level to -10 feet
- 10 feet to -15 feet
- 15 feet and deeper



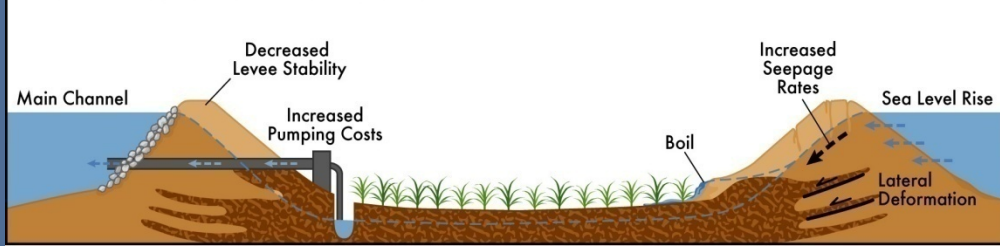
**Pre-1880: Freshwater Tidal Marsh**



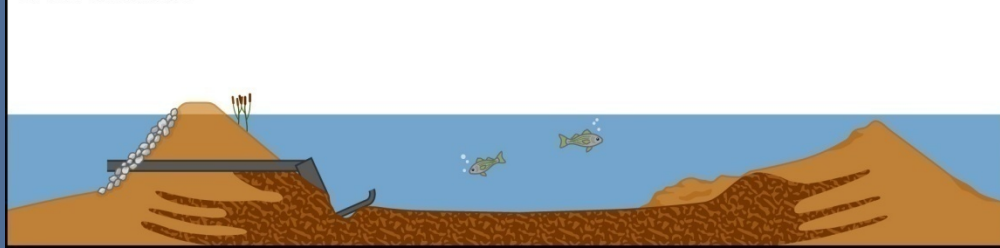
**1900's: Elevation Loss**



**2000's: Increased Levee Maintenance**



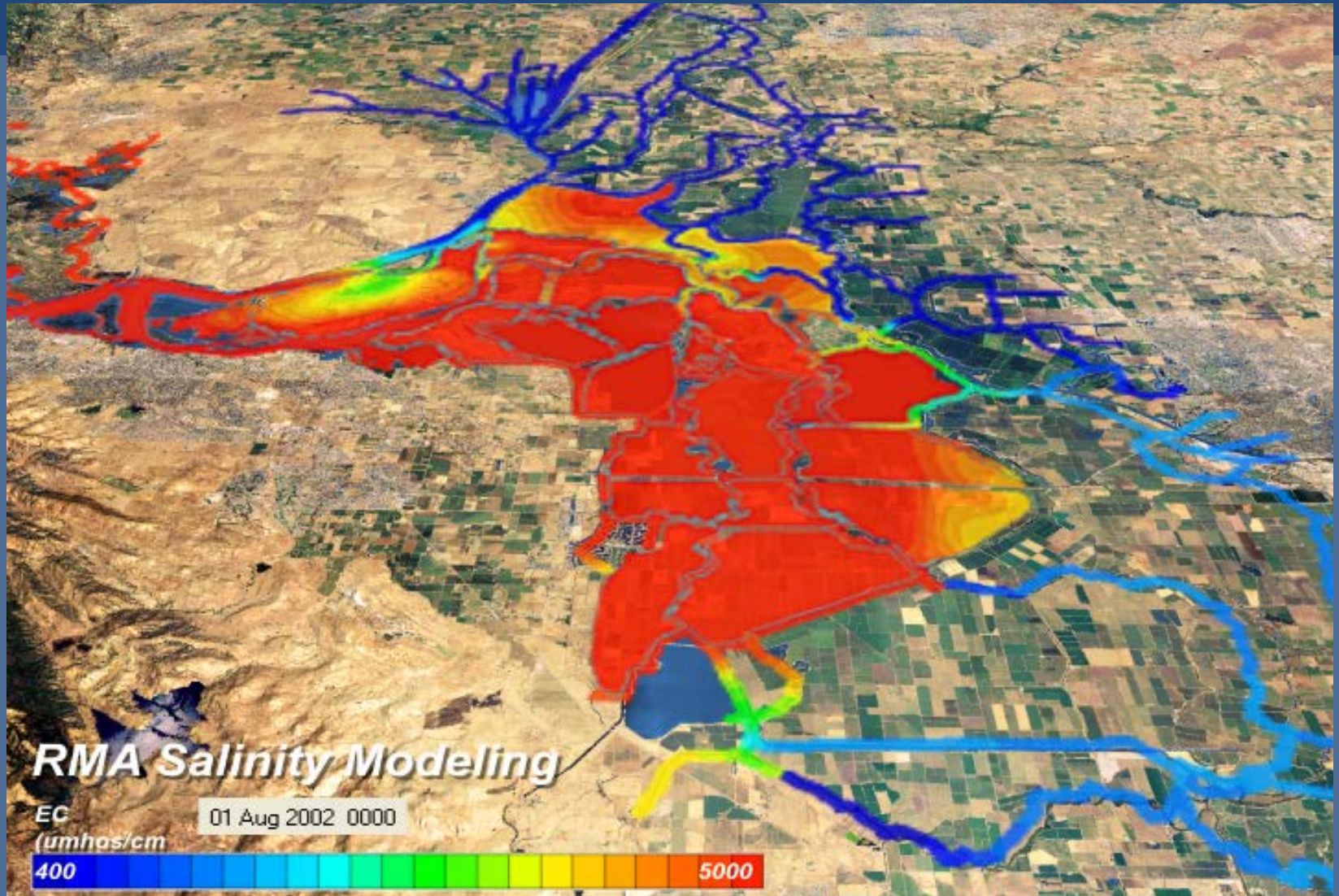
**or Levee Failure**





SACRAMENTO - SAN JOAQUIN  
**DELTA CONSERVANCY**  
A California State Agency

# 6.5 Magnitude Earthquake causing 20-Island Failure



**30 days: A saline estuary**





SACRAMENTO - SAN JOAQUIN

DELTA CONSERVANCY

A California State Agency

# Headlines

## San Francisco Chronicle

Printed on recycled paper | SATURDAY, JANUARY 3, 2009 | sfgate.com

### Peripheral canal, new levees urged for Delta

By Kelly Zito  
Chronicle Staff Writer

An influential Cabinet-level group Friday released its prescription for the sickly Sacramento-San

without the approval of the California Legislature.

The panel backed away from creating a new governing body to oversee the delta, altering the Cali

## CONTRA COSTA TIMES

WEDNESDAY, December 31, 2008

www.contracostatimes.com

### Sierra snow pack low, a dry winter looms

By Mike Taugher

Despite recent

Ocean conditions have shifted in a way that probably means Southern California

six-month hiatus by

## The Sacramento Bee

FRIDAY, JANUARY 9, 2009

www.sacbee.com

50 CENTS

### Federal draft report: Delta system imperils fish

The impacts are so significant that the agency is also studying whether killer whales in the ocean could be imperiled by declining Central Valley salmon, their

## Los Angeles Times

Thursday, January 15, 2009

50 cent

### L.A.'s water woes worsen

By Shelby Grad

Los Angeles has been told it can expect a big jump in the cost of water -- and that has officials angry and has raised the specter

of rationing, according to the Daily Breeze: Los Angeles could be facing a 21 percent increase in the cost of water as the continuing drought potentially

leads to a tougher water rationing plan limiting residents to outdoor watering only three days a week. The Metropolitan Water District, which provides

## CONTRA COSTA TIMES

TUESDAY, January 13, 2009

www.contracostatimes.com

### Delta fish hit record lows in 2008

By Mike Taugher

Delta fish numbers sank again to lows in 2008,

nearly 40 years ago to an index of 23, the lowest number on record

species. "If you're doing something in the

## The Sacramento

TUESDAY, January 13, 2009

### Nature Conservancy canal, with condition

By Matt Weiser

One of the nation's largest environmental groups has decided to support building a controversial new water canal around the Sacramento-San Joaquin Delta.

In a statement expected today, the Nature Conservancy calls a canal diverting the Sacramento River around the Delta an "essential component" to restore the estuary and protect

water s  
It thus  
the first  
environ  
group  
support  
But the  
conserv  
wants  
and inc  
govern

## Press-Telegram

LONG BEACH, CA

WEDNESDAY, JANUARY 14, 2009

www.prestelegram.com

### The cost of water may rise in L.A. DROUGHT: The hike of as 21 percent could be passed on by supplier.

By Rick Oriov

Los Angeles could be facing a 21 percent increase in the cost of water as the continuing drought potentially

leads to a tougher water rationing plan limiting residents to outdoor watering only three days a week.

The Metropolitan Water District, which

provides the Los Angeles Department of Water and Power with 60 percent of its supplies, unveiled the higher costs at a recent meeting, drawing anger

## San Francisco Chronicle

Printed on recycled paper | WEDNESDAY, JANUARY 14, 2009 | sfgate.com

### Water rationing likely in SoCal this spring

By Associated Press

The giant water wholesaler serving 18 million Southern Californians says there's an increased likelihood water will be rationed this spring.

The Metropolitan Water District, which supplies cities and water agencies throughout the region, had said earlier there was a 33 percent chance of rationing. In a report Tuesday,

the district hiked the possibility to 50 percent.

The U.S. Fish and Wildlife Service has restricted Sacramento-San Joaquin river delta water deliveries to Southern California

nia's  
ities  
only

ed a  
larch  
wers  
rules  
s to